

### III. THE PROCEDURE FOLLOWED IN THE DECISION MAKING PROCESS, INCLUDING CHANNEL OF SUPERVISION AND ACCOUNTABILITY

Decisions in the Police Department concern both citizens services as well as internal administration. These decisions are taken as per rules and law governing the same as per following:-

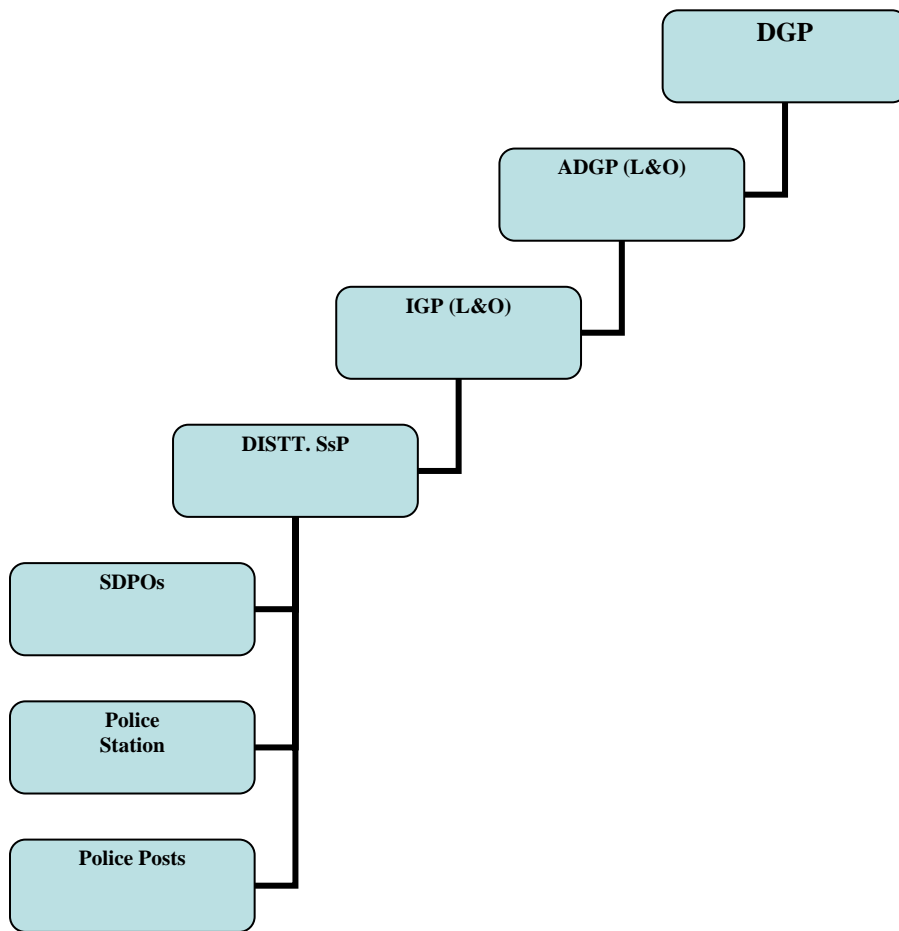
#### i). Decision making process related to State Police H.Q.

The decision making authorities in different types of decisions are as below as per Endst.No.P.I(2)-DW-GOs/2006-22647-69 dated 16-06-2006.

Sr.No.	Name of Branch	Officer under whom the branch will function	Supervisory officer	Final decision making authority
1.	P&L	SP Welfare	IGP (H) ADG (H)	DGP
2.	Finance	AIG(H)	IGP (H) ADG (H)	DGP
3.	Estate	SP(Welfare)	IGP (H) ADG (H)	DGP
4.	Welfare & Pension	SP(Welfare)	IGP (H) ADG (H)	DGP
5.	Audit	AIG(H)	IGP (H) ADG (H)	DGP
6.	NGO Cell	PS to DGP	IGP (H) ADG (H)	DGP
7.	Personnel-I,II,III	AIG (H)	IGP (H) ADG (H)	DGP
8.	Diary & Dispatch	A.O.	AIG (H) ADG (H)	DGP
9.	Law			
	a) OAs/ CWP's relating to transfers/promotions etc	a) JD (Law)	IGP (H) ADG (H)	DGP
	b) OAs/CWP's on deptl. Punishments/convictions	b) JD (Law)	IGP (L&O)/ ADG (L&O)	DGP
	c) Cr.M.Ps	c) JD (Law)	IGP (L&O)/ ADG (L&O)	DGP
10.	Accounts	A.O.	AIG (H), IGP (H) ADG (H)	DGP
11.	Crime and Law & order	DIG(A) through Dy.SP	IGP (L&O)/ ADG (L&O)	DGP
12.	Complaint	DIG(A) through Dy.SP	IGP (L&O)/ ADG (L&O)	DGP
13.	Motor Transport (P&L)	SP (Wel)	IG(H)/ADG(H)	DGP
14.	Cleanliness and maintenance of the PHQ building (Estate)	A.O./SP(Wel)	IG(H)/ADG(H)	DGP

Library will be maintained by Supdt. P&L branch under the supervision of AIG(H) / IG(H).

ii). Decision making process related to District Police, depicting Supervisory Structure:-



iii) Decision making process related to H.P Battalions, depicting Supervisory Structure:-

