

## Status on Sericulture Industries in the State

### Introduction:

Presently there are 8,275 families practising sericulture in the State and most of them are living below poverty line. The average income of the rearers is Rs. 5,000/- to Rs. 6,000/- per annum. The sericulture activities are being practised in eight Districts of the Pradesh namely Hamirpur, Bilaspur, Mandi, Kangra, Shimla, Solan, Sirmaur & Una. The details of Sericulture Divisions and District are given below:-

Sr. No.	Name of the Division	District covered
1.	Ghumarwin	Bilaspur
2.	Nadaun	Hamirpur
3.	Dehra	Una and part of Kangra
4.	Palampur	Kangra
5.	Mandi	Mandi
6.	Dhaulakuan	Sirmaur
7.	Shimla	Shimla, Solan

### 1. Details of Mulberry Farms/Nurseries:

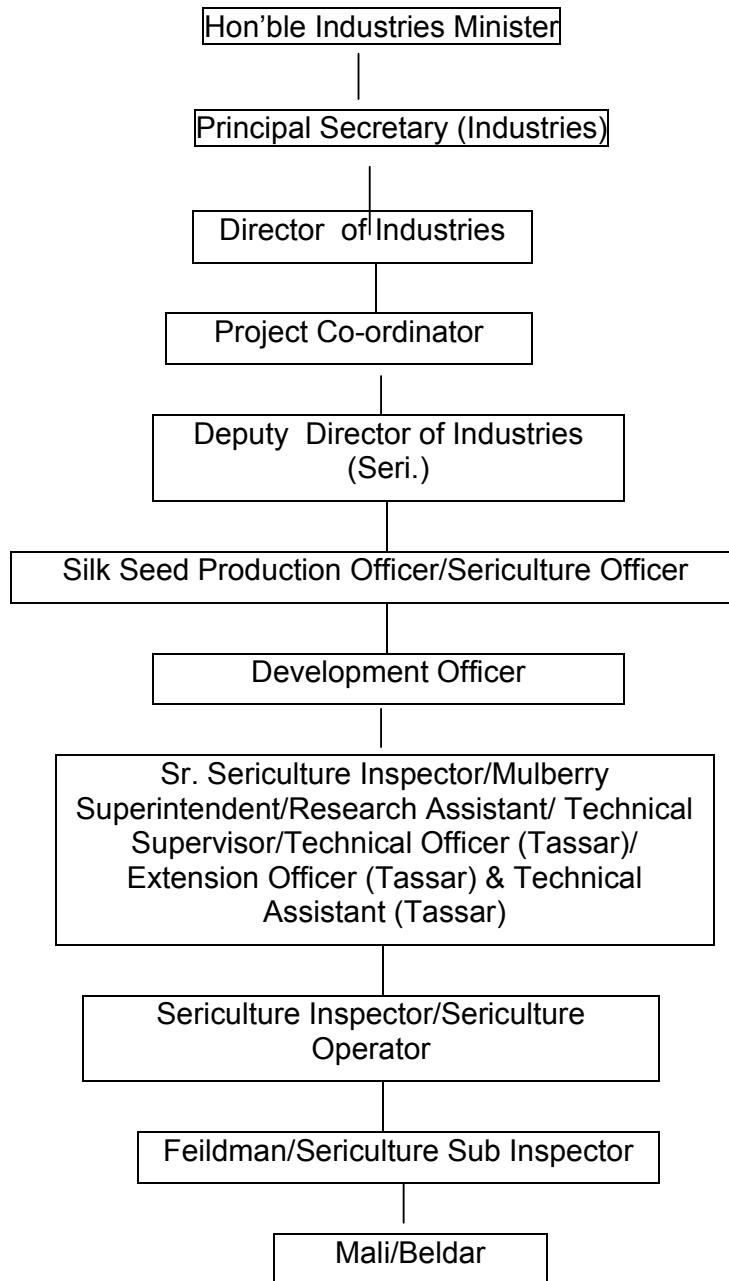
The Sericulture Division-wise details of Mulberry Farms/ Nurseries in Government/private sector is as given below:-

Sr. No.	Name of Division	No. of Mulberry farm	No. of Mulberry Nurseries		
			Govt.	Private	Total
1.	Ghumarwin District Bilaspur	16	3	8	11
2.	Mandi, District. Mandi	33	11	2	13
3.	Nadaun, District Hamirpur	5	2	3	5
4.	Nahan, District Sirmour	8	4	3	7
5.	Dehra, District Kangra	12	3	4	7
6.	Palampur, District Kangra	12	4	2	6
7.	Shimla, District Shimla	3	3	--	3
	Total:	<b>89</b>	<b>30</b>	<b>22</b>	<b>52</b>

### 2.Organisation set up and staff position:

#### a) Organisation set up:

Presently sericulture is under the administrative and technical control of Industries Department with headquarter at State Capital Shimla. The organization set up is given below:



**b) Staff Position:**

The details of posts of sericulture Wing

Sr.No.	Name of Posts	Sanctioned strength	Posts filled in	Posts vacant
1	DDI(Seri)	1	1	-
2	SSPO/SO	4	1	3
3	Dev. Officer (Seri)	2	2	--
4	SSI/Mul. Supdt/Rea. Asstt/	7	7	--

	Tech Sup.			
5	Seri. Insp/ Moth Tester/Farm Asstt./ Grainage Sup.	80	46	34
6	Demonstrator	1	--	1
7	Reeling Demonstrator	1	--	1
8	Mul. Sub. Insp/ Seed Exam/ Fieldman/ Budder	28	9	19
9	Beldar/ Mali/ Fieldman	132	127	5
10	Rearing Assistant (Tassar)	11	--	11
11	Manual Asstt.-cum-Chowkidar	4	--	4
12	Un Skilled Workers	10	10	--
13	Workers	2	2	--
14	Tech. Officer(Tassar)	1	1	--
15	E.O. (Tassar)	8	4	4
16	T.A (Tassar)	12	6	6
17	Seri. Operator(T)	10	9	1
	<b>Total</b>	<b>314</b>	<b>222</b>	<b>92</b>

### 3. Physical and Financial achievements

#### 3.1 Consumption of silk seed and production of Green Cocoons:

Sr. No	Name of Division	2003-2004		2004-2005		2005-06		2006-07 (upto 31.1.2007)		Percentage increase/ e
		Seed (Ozs)	Production (in kgs.)	Seed (Ozs)	Production (in kgs.)	Seed (Ozs)	Production (in kgs.)	Seed (Ozs)	Production (in kgs.)	
1.	Ghumarwin	974	42435	974	40413	1009	48778	1059	47304	11.5(+)
2.	Mandi	1210	30513	1100	32125	1291	31496	1282	32469	6.4 (+)
3.	Palampur	463	8372	437	10775	463	11234	482	11971	43.0(+)
4.	Nadaun	515	13112	545	15671	605	18516	607	20611	57.2(+)
5.	Dehra	550	14426	562	13968	570	21642	588	22210	54.0(+)
6.	Sirmaur	260	2857	203	5414	223	6135	252	6911	142.0(+)
7.	Shimla	31	582	27	146	25	484	25	600	3.1(+)
<b>Total :</b>		<b>4003</b>	<b>112297</b>	<b>3848</b>	<b>118512</b>	<b>4186</b>	<b>138285</b>	<b>4295</b>	<b>142076</b>	<b>26.5(+)</b>

#### 3.2 Production of Raw silk and employment generation:

Sr. No.	Scheme	2003-04	2004-05	2005-06	2006-07 (upto 31.1.2007)
1.	Raw silk production (Qtls.)	13.41	15.45	27.00	31.00 Qtls.

2.	Employment generation (lakh mandays)	4.75	5.75	7.55	5.87
----	--------------------------------------	------	------	------	------

### **3.3 The details of production & income generated through sericulture**

Year	Production green cocoon (kgs.)	Average rate (Rs.)	Total income to farmers (Rs. in lakhs)	Percentage increase/decrease
2003-04	1,12,297	191.00	71.67	--
2004-05	1,18,512	225.00	89.18	24.4(+)
2005-06	1,38,285	215.00	98.97	11.0(+)
2006-07	1,42,076	255.00	120.79	22.0(+)

### **4. State Plan Schemes**

#### **1) Supply of Chowki Silkworm to the farmers:**

The young silkworms (Chowki silk worms) are distributed from Govt. Sericulture Centres at subsidized price of Rs. 20/- per ounce to the farmers. The actual cost of the seed is Rs. 250/- per ounce and the silk seed is supplied from the State Grainage, Palampur and CSB Grainage, Dehradun.

#### **2) Raising/distribution of mulberry saplings to the farmers:**

The mulberry nurseries of improved varieties like S-146, TR-50, K-2 and Mandlay are raised in Govt. Sericulture Farms and one year old saplings are distributed to sericulture farmers at the nominal rates of Rs. 0.25 per sapling. The actual cost of raising mulberry saplings is Rs.2.00 per sapling.

#### **3) Supply of disinfectant material to the farmers for control of silkworms diseases:**

To control the silk worms diseases disinfectants such as formuline, sericholar, Vijetha etc. are supplied to the farmers free of cost.

#### **4) Training and technical guidance to the sericulture farmers and improvement of existing infrastructure:**

For the successful harvesting of cocoon crop the sericulture farmers are provided technical training and guidance by the sericulture experts and the existing infrastructure like Chawki Rearing Centres, mulberry gardens are improved under this scheme.

**5) Grant-in-aid to S.C. Sericulturists for construction of rearing of shed and purchase of equipments:**

The schedule caste rearers are given grant-in-aid of Rs. 8,500/- for the construction of rearing mud houses and Rs. 1,500/- for the purchase of silkworm rearing equipments.

**Annual Plan Financial Allocations and expenditure under Sericulture**

**(Rs. in lakhs)**

Sr. No.	Year	State Plan		Special Central Assistance	
		Outlay	Expenditure	Outlay	Expenditure
1.	2003-04	28.36	26.24	3.00	3.00
2.	2004-05	44.00	37.51	41.75	40.68
3.	2005-06	45.00	47.84	45.11	34.62
4.	2006-07 ( up to 31.1.07)	146.00	52.47	50.00	9.90

**5. Centrally sponsored Programmes (Special Programmes for the Development of Sericulture):**

**5.1 Catalytic Development Programme in Himachal Pradesh (with the assistance of Central Silk Board):**

The Catalytic Development Programme was envisaged in the Xth Five Years Plan to the tune of Rs. 1633.395 lakhs out of which Rs. 866.063 lakhs was CSB share, 100.129 was State share and 667.203 was beneficiaries share. Some of the scheme are 100% Centrally sponsored other are on 90% CSB & 10% state share & 50% beneficiaries share. Till date Central Silk Board has released Rs. 638.391 lakhs as its share. The main schemes are being implemented under this project are as given below:-

**1. Assistance for construction of Rearing Houses :**

Under this scheme Rearing Houses of category A, B & C are constructed with a construction cost of Rs. 20,000/- , 50,000/- and 1,00,000/- respectively out of which 50% is Grant.

**2. (a) On farm training & supply of start up tools:**

Three days on farm training is imparted to the new sericulture farmers and after the completion of training tools worth Rs. 1750/- are supplied to the farmers for silk worms rearing.

**3. Assistance for drip irrigation:**

Drip irrigation facilities are provided to the farmers at the rate of Rs. 4,000/- per bigha or 48,000/- per hectare.

#### **4. Supply of quality disinfectant material:**

Under this scheme quality disinfectant material worth Rs. 1000/- is supplied to sericulture farmers for the control of silk work diseases.

#### **5. Re-imburement of cost of mulberry saplings:**

For the promotion of private Kissan nurseries grant of Rs.0.50 per sapling is given to the farmers.

#### **6. Assistance for construction of Chawki Rearing Centre and procurement of Chawki Rearing equipments :**

For the establishment of Chawki Rearing Centres and purchase of equipments a grant of Rs. 1.35 lakhs is given to beneficiary.

#### **7. Setting up of Reeling Units**

50% grant is given to the entrepreneurs for the setting up of Multi-end Reeling Unit. The unit cost of 6-basin multi-end reelig unit is Rs. 6.15 lakhs.

#### **8. Incentive on the production of silk yarn**

Subsidy of Rs. 100/- per Kg is given to the reeling unit on the production of silk yarn.

#### **5.2 Cluster Development Project (with the assistance of Central Silk Board):**

On the basis of the survey conducted by RO, CSB, New Delhi in May-2005, a Cluster Development Project for Mulberry Sericulture was formulated for Mandi & Hamirpur Districts of Himachal Pradesh. The project details are as under:-

1. PROJECT DURATION: 2006-07
2. COST OF THE PROJECT: Rs. 119.145 LAKHS
  - (a) CSB : Rs. 66.256 LAKHS
  - (b) STATE SHARE: Rs. 6.306 LAKHS
  - (c) BENEFICIARY SHARE : Rs. 46.583 LAKHS
3. Physical Targets/Projections of the Project :
  - (a) No. of Farmers to be covered: 100  
(50 each in Mandi & Hamirpur District)
  - (b) DFLS Consumption - (100 farmers )  
Year 2007-08 - 4000 Dfls or 40 ozs.

- Year 2012-13- 24000 Dfls or 240 ozs.
- (c) Mulberry Plantation : 100 (Unit) or 100 acres  
 Tree type : 90% (300 trees per farmer)  
 Bush Type : 10% (4000 Plants per farmer)
- (d) Av. Cocoon yield per100 DFLS : 40 Kgs.
- (e) No. of Crops to be taken : 3  
 (Spring/Summer/Autumn)
4. Facilities to be created : (1) construction of rearing houses (2) Supply of rearing appliances & quality disinfectants (3) Estt. of CRCs (4) Estt. of Drying chamber and Dupion silk reeling unit.
5. Main Project Implementing Agency: CSB-Through –CDC, Hamirpur (HP).
6. Supporting Implementing Agency : DOI, Govt. of HP, Distt. Administration, CSR & TI, Pampore & RO CSB., New Delhi.

### **5.3 Special SGSY Programmes:**

#### **1. Special Sericulture Project for District Hamirpur:**

A special Sericulture Project under SGSY of Rs. 9.13 crores is under implementation in District Hamirpur. The project details are as given below:-

1. Total Project Cost = Rs. 913.00 Lakhs
2. Project period = 2002-03 – 2006-07
3. To plant 10,00,000 high yielding mulberry plants in 80 to 100 hect. for additional land by involving 100 SHGs farmers in the district by planting 10000 plants per group/1000 plants per beneficiary.
4. Raising of three mulberry nurseries to produce 10,00,000 mulberry plants over a period of 5 years to fulfill the demand of mulberry plants in District Hamirpur.
5. Establishment of five technical service centers in District Hamirpur for the transfer of technology for the end users and establishment of three cocoons collection centers in the district for providing marketing facilities.
6. To impart training to one hundred groups over a period of four years.
7. To organize field visit trips for 50 swarozgaries over a period of five years, to expose them with the latest know how related to sericulture industry.
8. Construction of 1000 rearing equipments to the (100 groups comprising) 1000 people during the project period.
9. Distribution of rearing equipments to the (100 groups comprising) 1000 people during the project period.
10. To create infrastructure for publicity and propaganda which will include, publication, soil testing Kits, preparation of road side hoardings and field day celebrations etc.

11. To facilitate mobility for effective implementation of the project including transportation of mulberry germ plasm and inspection of farmers fields.
12. To introduce reeling multi-end machines for post cocoon technology

**FINANCIAL PROVISION LOAN/SUBSIDY COMPONENT**

Sr. No.	Proposals	Loan component/ beneficiaries contribution	Subsidy/Grant Component		Total
			Central Share	State Share	
1.	Promotion of Sericulture activities.	316.25	222.1875	74.0625	612.50
2.	Establishment of Mulberry nurseries.	---	5.911	---	5.911
3.	Infrastructure Development.	125.11	124.56	---	249.67
4.	Exposure Visit & Training to Beneficiaries.	---	13.00	---	13.00
5.	Awareness Generation and Publicity.	---	5.90	---	5.90
6.	Arrangement to transport mulberry germ plasm FYM etc.	---	19.00	---	19.00
7.	Equipment or Date analysis	---	7.00	---	7.00
	<b>Total :-</b>	<b>441.36</b>	<b>397.5585</b>	<b>74.0625</b>	<b>912.981</b>

**Latest achievements under the project**

1.	No. of SHGs framed	100 Nos.
2.	SHGs trained	100 Nos.
3.	SHGs linked with banks	80 Nos.
4.	No. of mulberry plants planted	6.18 lacs
5.	C/o Technical Service Stations	4 Nos.
6.	C/o Cocoon marketing Centre	3 Nos.
7.	Reeling unit established	1 No.
8.	Training/Awareness Camps organised	150 nos.
9.	Nurseries raised	12 Nos.
10.	Rearing sheds constructed	670 Nos.
11.	Cocoon Production	21,634 kgs.

12.	Value of these cocoon	Rs. 18.97 lacs
13.	Expenditure incurred	Rs. 508.63 lacs
14.	Beneficiaries share	Rs. 219.82 lacs

## **2. Diversification in Agriculture (Sericulture Component) for District Mandi:**

Project "Rural Development through Diversification in Agriculture" is under implementation in Mandi District and Sericulture activity is one of the components under the Project. This project has commenced from 2002-03. The salient features of the project are as under:-

### **a) Providing of Individual infrastructure:**

Under this component 50 SHGs comprising of 10 farmers in each group are to be formed for taking up integrated sericulture activities. Under this, each member of the SHG will be provided a financial assistance of Rs. 50,000/- in the shape of loan and subsidy in the ratio of 66:33 for the construction of rearing shed and other inputs like rearing appliances, disinfectant and other related material. Each member will plant 1000 mulberry plants in his land for rearing purpose. So far 50 SHGs have been formed in the District for taking up Sericulture activities and 42 SHGs have been sanctioned a loan of Rs. 136.50 lacs and subsidy of Rs. 73.50 lacs for construction of rearing sheds and to have related inputs. Out of these 42 SHGs which have been sanctioned by Banks, 37 SHGs have been disbursed a loan of Rs. 120.25 crore as on 31<sup>st</sup> January, 2007. All the remaining SHGs will be disbursed loan for the construction of Rearing shed by end of August, 2007.

### **b) Setting up of Mulberry Nurseries of High Yielding Varieties:**

3 Nos. of nurseries have been set up at Sainj, Sidhpur and Dole Gadiara, the detail is as under:-

Sr. No.	Place of Nurseries	Area in Bighas	No. of Saplings to be produced per annum (Nos.)
1.	Sainj in Gohar Block	13-13-1	30,000
2.	Sidhpur in Dharampur Block	7-0-0	25,000
3.	Dele Gadiara in Chountra Block	4-10-0	30,000

In these nurseries high yielding varieties of mulberry plants are grown and are distributed to the members of the SHGs. Upto 31-01-2007, 473860 plants and 110800 cuttings have been distributed to the farmers.

### **c) Setting up of Technical Service Stations:**

Three Technical Service Stations i.e. at Kunnu in Drang Block, Rakhota in Gopalpur Block and Hataun in Chauntra Block are being set up by making an investment of Rs. 14.50 lacs each, which includes cost of building, machinery & equipments and shall act as nodal centres for technical guidance and collection centre for cocoon. Besides this mulberry nurseries of high yielding varieties will be set up in these TSSs and the plants grown there will be utilized for Chawki-rearing. The details are as under:-

Sr. No.	Place of TSS	Area	Nos. of plants planted
1.	Kunnu	18-1-17 Bighas	600
2.	Hataun	15-0-0 Bighas	900`
3.	Rakhota	0-21-06 Hect.	900

The TSS at Rakhota stands completed and stands operational zed after installation of necessary machinery and equipment. The other two TSS i.e. at Kunnu and Hataun are under construction and will be completed by the end of year.

**d) Multi-Purpose Activities-cum-Demonstration Farms:**

Two existing sericulture farms i.e. at Dadoh in Balh Bock and at Bari in Gopalpur block having 2.16 hectares area at Dadoh and 1.5 hectares at Bari have been handed over to the NGO i.e. **Bhartia Agro Industries Foundation Pune (BAIF)** for developing the same as model farms by applying latest techniques for the development of sericulture activity as a commercial activity, thereby providing practical demonstrations to the Members of the Self-Help-Groups, so that the members of the SHGs are able to take the activity on a commercial basis rather than on casual basis. In these farms the BAIF have planted bush type sapling of S-1635, S-36, S-13, S-146 and T-10 varieties which will give 3 time leaves as compare to the existing varieties and the farmers will be able to take 4 crops as compare to 2 crops prevalent in the district. Besides this, these farms are acting as a technical guidance centres for providing latest technique to the farmers and a source of supplying late-age silkworm so that the farmers have to rear them for 14 to 19 days as compare to 20 to 25 days as per prevalent practice. BAIF will also provide 5.00 lacs of cuttings to the SHGs as well as to the general farmers.

Upto 31-03-2006, 410 members of SHGs were provided training in both these farms in the field of silkworm rearing, Vermin compost making intercrop pattern and making of handicraft items from the waste of Cocoons. 471860 plant and 110800 cuttings have been distributed to the SHGs and others farmers. The average survival rate of these saplings is 42%.

**e) Marketing support:**

Under this component a provision of Rs. 10.00 lacs have been kept as revolving fund and can only be utilized during the procurement season.

**f) Sensitization and Training:**

Under this component, Rs. 15.00 lacs exists up to March, 2006. In all total 500 members of 50 S.H.Gs were to be imparted training 410 No. of members of 41 S.H.Gs were imparted training at Dadoh and Bari farms. Besides this 152 farmers identified by BAIF were also imparted training. Besides this 17 farmers of 17 SHGs have been given exposure visit to BAIF, Pune. During current financial year the rest of farmers will also be imparted training.

**g) Composite Silk Reeling & Weaving Unit: -**

This proposed composite unit has to be leased out to a private entrepreneur after creating the necessary infrastructure i.e. construction of building and installation of machinery etc. During the course of various discussions it was decided to have this unit in a private sector and special incentives will be given to the entrepreneurs out of these funds rather than setting up a unit under the project. Accordingly a private entrepreneur has been identified and land for the setting up of this unit stands allotted to him. This unit will come up during this financial year and he will be purchasing cocoons produced by the farmers so that marketing problem is solved once for all. The total outlay of this unit will be Rs.26.00 lacs.

**Project Summary:**

(Rs. in lacs)

Sr. No	Name of Component	Total outlay	Exp.	Balance
<b>1.</b>	<b>Providing of individual infrastructure</b>	<b>253.05</b>	<b>120.25</b>	<b>42.25</b>
a)	Loan	162.50	117.00	45.05
b)	Subsidy	87.50	64.75	22.75
c)	Individual Infrastructure	3.05	1.70	1.37
<b>2.</b>	<b>Common marketing infrastructure</b>			
a)	Marketing-cum-collection centre	43.50	60% work has been completed under the supervision of DRDA.	
b)	Marketing support	20.00	-	20.00
c)	Establishment of nurseries	12.00	10.00	2.00
d)	Composite unit	26.00	Under implementation by Pvt. Entrepreneurs.	
e)	Weaving Unit	5.00	-do-	
f)	Sensitization & training	17.05	4.68	12.37
g)	Professional/expert expenses	60.72	DRDA	
h)	Office Automation	5.00	2.00	3.00
i)	Field Staff, Traveling exp. and other misc. expenses.	7.50	Funds are Being operated by DRDA.	

The total outlay of Sericulture component of project "Diversification in Agriculture" is Rs. 449.82 lacs. and DRDA has released Rs. 26.36 lacs under the components viz establishment of nurseries, individual infrastructure, sensitization & training and office automation which has been fully utilized.

Sr. No.	Head	Outlay	Amount received	Expenditure	Balance	Remarks
1.	Training & subsidy	17.05	5,87,000/-	4,67,899/-	1,19,901/-	410 Nos. are members of 41 SHGs (self help groups) were impart training at Pandoh and Bari Farm and 17 members of SHGs have been given exposure visit to BAIF Pune.
2.	Nurseries	43.50	10,50,000/-	8,52,046/-	1,98,954/-	Rs.2,77,900/- recouped from T.S.S. head.
3.	Marketing of collection cum TSS (3 Nos.)	12.00	5,17,900/-	4,01,726/-	1,16,174/-	43.50 includes Rs.12.00 lacs for building and Rs.2.50 for eqpts. per centre out of budget amounting Rs.2,77,900/- have been spent for factory and plantation etc. and balance with DRDA.
4.	Infrastructure	253.05	1,80,850/-	1,66,779/-	13,271/-	
5.	Office automobile	5,00,000	2,00,000/-	1,94,338/-	5,662/-	Out of this outlay only 3.05 is to be utilized by this office balance loan and subsidy.
6.	Misc. Exp.	7,50,000	1,00,000/-	69,414/-	30,586/-	--

General Manager, DIC-cum Sericulture Officer, Mandi may apprise the Chairman about the latest physical and financial achievements under the project.

### **3. "Goldmines" Project for the development of sericulture in Distt Bilaspur. H.P.**

SGSY Special Goldmine Projects was sanctioned by Govt. of India in the year 2000 with a total financial outlay of Rs. 840.35 lacs. Under this project, the major activities to be covered were Floriculture, Mushroom Cultivation and Sericulture. A total of 900 beneficiaries were to be covered under the project. The major emphasis of the project was on the promotion of Sericulture in the District with a total financial outlay of Rs. 361.91 lacs and coverage of 500 rearers.

#### **Physical and financial progress under the project is as follows:**

<b>Sr No</b>	<b>Component</b>	<b>Amount sanctioned (Rs in lacs)</b>	<b>Expenditure made so far (Rs in lacs)</b>	<b>Physical progress</b>
1	C/O Technical Service Station, 3 no.	25.65 ( with a provision of Rs. 2.25 lacs for working capital to be raised as loan)	16.993	Work of 3 T.S.S. at Daslehra, BharoliKalan and Pohni has been completed.
2	C/O Collection-cum-Marketing Centres, 2 no.	31.00	20.58	Work of 2 Collection centers at Kandror and Sanghaswin has been completed.
3	Reeling and weaving unit, 1 no.	31.76 (With a provision of Rs. 126.00 lacs working capital to be raised as loan)	-	Work not started yet.
4	Assistance to rearers, 500 no.	250.00 ❖ <b>Loan Part:</b> Rs.176.25 lacs ❖ <b>Subsidy part:</b> Rs. 73.75	200.00 ❖ Loan part: Rs. 141.00 lacs ❖ Subsidy part: Rs. 59.00 lacs	400 silkworm rearers assisted so far under the project in the District.

General Manager, DIC-cum Sericulture Officer, Bilaspur may apprise the Chairman about the latest physical and financial achievements under the project.

### **6. Reeling Infrastructure:**

#### **I. Existing Units:**

1. M/s Abhishek Silk Mills , Gaggal, Distt. Kangra

#### **Capacity**

6- Basin

2. M/s A.K. Silk Udyog , Patti Tehsil Palampur Distt Kangra 6- Basin

## **II. Units approved and being set up**

1. M/s Shyam Silk Mills, Industiral Area, Mandi 6- Basin
2. M/s Pankaj Silk Inds, Bhuana, Tehsil Palampur 6-Basin
3. M/s Shimla Snow Silk, Sujanpur, Distt. Hamirpur 6- Basin
4. M/s Hamir Silk Udyog, Nadaun, Distt. Hamirpur 6- Basin
5. M/s Kuldeep Silk Udyog, Kandrouer, Distt. Bilaspur 6-Basin

## **III. Starting of Reeling Section of Nurpur Silk Mill:**

The Reeling Section of Nurpur Silk Mill has been transferred to Industries Department from HPGIC. The H.P. Government has conveyed the approval to run this Unit on sound and commercial basis by the Industries Department. The charge of this Reeling Section has been given to the DDI (Seri.) Palampur.

## **7. New initiatives:**

- a) A Cutting Edge Sericulture Technology Project of Rs. 352.933 lakhs for Oak Tassar in District Mandi, Kangra and Kullu is at final stage of sanction with the Government of India.
- b) A Cluster Development Project of 250 farmers for District Una is being prepared by the Central Silk Board.
- c) A Cluster Development Project of 50 farmers for District Bilaspur is being prepared by State Sericulture Department specially for scheduled caste rearers.
- d) Opening of new Regional Extension Centre (REC) at Rampur, District Shimla
- e) Three lacs kgs. green cocoon production by the end of 11<sup>th</sup> Five Years Plan.
- f) Number of rearers to be increased upto 15,000 by the end of 11<sup>th</sup> Five Years Plan.
- g) Average Annual Income of farmers to be increased upto Rs. 15,000 by the end of 11<sup>th</sup> Five Years Plan.
- h) Green Cocoon marketing to be increased from existing 15% to 80% by the end of 11<sup>th</sup> Five Years Plan.