

GOVERNMENT OF HIMACHAL PRADESH
INDUSTRIES DEPARTMENT



ANNUAL ADMINISTRATION
REPORT

2010-11

FOREWORD

The State of Himachal Pradesh has made significant achievements in the field of Industrialization in the past few years. With the ushering in of a liberalized economy and notification of Special Package of Incentives for our State *w.e.f.* 07/01/2003, the flow of investments into State has increased manifold. We have received several queries for setting up of new industrial ventures from investors in the past few years and this trend is by and large continuing despite the recent deep recession countrywide. The State Government has responded to the rapidly changing national and international economic environment and has given priority to industrial development in the State. Today, reputed Industrial Houses have invested in variety of projects in the State ranging from agro-processing to engineering, pharmaceuticals, Textiles, IT and electronic goods.

The entrepreneurs today not only view Himachal Pradesh as an attractive destination for investment, but they have faith in the ability of our system to deliver the goods in a time bound manner.

I believe that the Annual Administration Report of the Department for the year 2010-11 is a modest attempt aimed at presenting an integrated picture of the working of the Department, will definitely help the policy makers and those who are interested in the industrial development of the Pradesh. I would welcome any advice or suggestion on the working of the Department and making this document more useful.

Harinder Hira, IAS
Additional Chief Secretary (Industries)
to the Govt. of Himachal Pradesh.

PREFACE

The State has witnessed positive industrial growth during the last few years. We are witnessing investment boom in the State which is primarily because of peaceful industrial climate investor friendly approach, transparent and accessible administration, reliable power at reasonable tariff, well developed infrastructure like power, roads, inland container depot, proposed supply of piped NG & CNG for industrial, domestic, commercial and transport sectors, trade centre, CETP, solid and hazardous waste management , labour hostel, land bank, single window clearances, escort services for investors etc.

As on 31/03/2011, there are 471 Medium & Large Scale industries registered in the State having an investment of Rs 8918.55 crore and have provided employment to about 52,823 persons. In addition, there are 37364 registered Small Scale Industries having an investment of about Rs. 4573.59 crore and have provided employment to about 1,99,582 persons.

The Special Package of Incentives, granted by the Govt. of India in January, 2003 has been supplemented by the Industrial Policy and Incentive Rules, 2004 which provide more incentives to the potential and existing entrepreneurs in the State such as tax concessions, concessional rates of electricity duty, special incentives for establishing industrial units in the backward and tribal areas of the State, incentives for training and development of manpower etc.

The Annual Administration Report for the year 2010-2011 has reflected the details of Programmes and Schemes being implemented by the Department. I hope, this publication will be useful to various Departments, Corporations, Organisations, Planners, Entrepreneurs and the Public at large.

J.S. Rana, IAS
Commissioner Industries,
Himachal Pradesh.

CONTENTS

Sr. No.	CHAPTER TITLE	Page No.
1.	BACKGROUND AND INTRODUCTION	5-7
2.	DEPARTMENT AND ITS ORGANISATIONAL SET UP	8-14
3.	INCENTIVES TO INDUSTRIAL UNITS	15-22
4.	MAJOR PROGRAMMES AND SCHEMES	23-62
5.	OBJECTIVES AND ACTIVITIES OF CORPORATIONS /BOARD	63-87
6.	11th PLAN 2007-12 AND ANNUAL PLAN 09 -10	88-98
7.	THE RIGHT TO INFORMATION ACT, 2005	99.129
8.	ANNEXURE-A	130
9.	ANNEXURE-B	131-134
10.	ANNEXURE-C	135

CHAPTER-1

INTRODUCTION

The economic growth of the State is predominantly governed by the agriculture and allied activities. During nineties, the growth rate remained more or less stable. The decade showed an average annual growth rate of 5.7 percent, which is at par with national level. The economy has shown a shift from agriculture sector to industries and services. The percentage contribution of agriculture and allied sectors in total State Domestic Product has declined from 57.9 percent in 1950-51 to 55.5 percent in 1967-68 to 26.5 percent in 1990-91 and to 14.5 percent in 2009-10.

- 1.1 The share of industries and services sector respectively has increased from 1.1 & 5.9 percent in 1950-51 to 5.6 & 12.4 percent in 1967-68, 9.4 & 19.8 percent in 1990-91 and to 11.7 percent and 17.7 percent in 2009-10. However, the contribution of other remaining sectors has shown a favorable shift i.e. from 35.1 percent in 1950-51 to 56.1 percent in 2009-10.
- 1.2 There was positive industrial growth during the year 2010-11. In MSE sector, 963 industrial units were registered on permanent basis with an investment of Rs. 965.39 crore providing employment to about 10,002 persons. In Medium & Large Scale Sector, 27 units were issued Certificate of Commencement of Production (COP) having investment of Rs. 2118.33 crore and providing employment to 3,740 persons.
- 1.3 As on 31/3/2011, the Department has registered on permanent basis 37364 Small scale units with an investment of Rs. 4573.59 crore employing about 1,99,582 persons. In addition, there are 471 Medium & Large scale units having an investment of Rs. 8918.55 crore employing about 55,823 persons.
- 1.4 The grant of Special Package of Incentives by the Central Govt. for setting up of Industries in the State which was notified on 7-1-2003 together with the Package of Incentives provided by the State Govt. in the Industrial Policy & Incentive Rules, 2004 has resulted in high actual investment in both MSE and Medium & Large Scale Sectors in the State.

After the notification of the incentive package by GOI for our State on 7/1/2003, there has been a perceptible increase in the number of proposals received for setting up industries in the State. In all, upto 31/3/2011, 14313 new proposals and 411 expansion proposals with an indicated total investment of Rs 44296.66 crore and employment potential of 499827 persons have been approved/ provisionally registered in MSME & Large scale industrial sector.

- 1.6 With a view to provide umbrella support to existing and new ventures, the State Govt. had notified a State Level Single Window Clearance and Monitoring Authority (SLSWC&MA). This Authority had 51 meetings upto 31/3/2011 and has approved 864 projects envisaging investment of Rs 27850.51 crore and employment potential of 138124 persons.
- 1.7 The main emphasis of the Government is to take industries to interiors of the State. For this purpose, availability of good quality infrastructure is very important to attract Industry and ensure that these projects are sustainable in the long run. The State Government is, therefore, laying emphasis on development of self contained Industrial Areas/Estates where basic amenities like roads, power, sewerage, water and communications etc. are provided. Presently, 40 industrial areas and 15 industrial estates have been developed across the State.
- 1.8 Exports have been recognized to spur economic growth, especially in this era of opening up of our economy, its liberalization and structural reforms within the economy. A steady growth in exports is, however, not possible in the absence of proper and adequate infrastructure. Thus, high quality infrastructure comparable to international standards is essential to facilitate unhindered production, cut down the cost of production and make our exports internationally competitive. Hence the Assistance to States for Developing Export Infrastructure and other Allied Activities (ASIDE) Scheme which has been launched by the Ministry of Commerce and Industry, Department of Commerce, Govt. of India from the year 2002-03 has been made full use of by the State Govt. in creating infrastructure for exports. During the year 2010-11, an amount of Rs.570 lakh was received

from the Govt. of India under the scheme which is being spent on improvement of roads to remove transport bottlenecks and on power infrastructure to provide adequate and uninterrupted power supply to exporting industrial units in Kala-Amb- Parwanoo -Baddi- Barotiwala- Nalagarh industrial corridor which is main export zone of the State.

- 1.9 In order to develop entrepreneurship, a Centre for Entrepreneur Development (CED) has been set up at Parwanoo in collaboration with the Government of India. To create more employment opportunities, various employment generation programmes like Prime Minister's Employment Generation Programme (PMEGP), Rural Industries/Rural Artisans Programme, Entrepreneurship Development Programmes (EDPs) etc. are being implemented
- 1.10 Handicrafts and Handloom Industries have a huge potential in the State. To fully tap this potential. The State Govt. is availing the Central Assistance available for promotion of these activities in the form of Centrally Sponsored Schemes such as Integrated Handloom Development (IHDS), Handloom Weavers Comprehensive Welfare Scheme (Health Insurance Scheme and Mahatma Gandhi Bunkar Bima Yojana) and Marketing and Export Promotion Scheme which are primarily targeted to benefit handloom weavers. Main components of IHDS scheme are financial assistance for Base Line Survey, Formation of Consortium, setting up of yarn Depot. Design Development and product diversification, setting up or common facility centre/Dye House, publicity and marketing, basic inputs, skill upgradation and construction of worksheds etc.
- 1.11 In some pockets of the State, the climatic conditions are conducive for the development of Sericulture. At present, Sericulture related activities provide subsidiary occupation to about 9405 families out of which 8529 families are engaged in silk- cocoon production, most of these families belong to the poorer strata of society. Therefore, Sericulture has been given the status of a priority industry and is eligible for all such facilities, which are being given to priority industries in the State.

CHAPTER-2

DEPARTMENT AND ITS ORGANISATIONAL SET-UP

Brief History of the Department:-

During the period 1948-52, Himachal Pradesh was Chief Commissioner's Province with 4 Districts i.e. Chamba, Mahasu, Mandi & Sirmaur. In 1952, it became a Part "C" State under Lt. Governor and elected Legislative Assembly. Bilaspur became the fifth District of the State. A Development Officer from erstwhile Punjab had the additional charge of Industries Department in Chief Commissioner's Office. Nahan Foundry at Nahan, Mohan Meakins breweries at Kasauli and Solan, Salt Mines at Drang (Mandi) and Rosin & Turpentine Factories at Nahan and Bilaspur were the main industrial units functioning in the State even before grant of Statehood. Nahan Foundry was established in 1875 by the then Maharaja of Sirmaur State. It was later made a Joint Sector Enterprise of the Government of India. In the year 1952, this Company was taken over fully by the Government of India and it was registered as a Public Limited Company under the Companies Act on 25.10.1952. In September, 1964 its ownership was transferred by the Government of India to the Himachal Pradesh Government. In SSI sector, four small gun factories were functioning in Mandi District, manufacturing high quality single barrel/double barrel guns.

The State remained a Union Territory during the period 1957 to 1971. Additional activities entrusted to the Department included ITIs, Employment Exchanges, Weights and Measures, Rural Industrial Training Institutes, Tea and Sericulture. The District Industries Offices were started in 1957 with one office catering to more than three Districts. Extension Officers (Industries) were also appointed at block level. After reorganization of the State in 1966, District Industries Officers were appointed for newly created Districts of Kinnaur, Kangra and Kullu. The State Aid to Industries Act-1968 was formulated.

Himachal Pradesh got full Statehood in 1971. Thereafter, the stress was laid on infrastructure development and industrial areas were developed at Parwanoo, Barotiwala, Bilaspur, Shamshi, Nagrota Bagwan, Mehatpur & Chambaghat. The District Industries Officers were posted in each

District. The Rules regarding Grant of Incentives to Industries, 1971 were formulated. The Labour & Employment Wing was separated from the Department in 1972. District Industries Centres came into being in 1978 as a 100% Centrally Sponsored Scheme and the District Industries Officers were replaced with General Managers, District Industries Centres. The Technical Education and Weights & Measures Wings were also separated from the Department in 1982. Rural Industrial Training Institutes (RITIs) for girls were transferred to Department of Technical Education & Tailoring Centres were transferred to Rural Development Department. The Tea Wing of the Department was also transferred to Agriculture Department in 1998. In 1984, funding pattern under District Industries Centres Scheme was changed to 50:50 ratio and the Scheme was completely transferred to State in 1994. The Incentives Rules were revised in the year 1980 & thereafter in 1984, 1991, 1996, 1999 and 2004.

2.2 The Industries Minister heads the Industries Department. At the Secretariat level, there is a two tier structure with the Additional Chief Secretary (Industries) and the Special/Joint/Deputy/Under Secretary (Industries).

2.3 The Directorate is headed by the Director of Industries. The Directorate is broadly divided into six functional categories. These are as detailed below:-

(i) Store Purchase Organisation

The Store Purchase Organisation is headed by the Additional Controller of Stores. He reports to the Controller of Stores (Director of Industries) in the matters concerning Store Purchase Organisation. He is further assisted by Senior Technical Officer (Mech.), Store Inspection Officer (Textile), Joint Director of Industries, Superintendent(s) Gr.-I & II, ministerial and other staff. He is further assisted by the Tehsildar (Recovery), Naib Tehsildar in the matter of recovery of loans and land acquisition.

(ii) Administration and Accounts Wing

The Administrative and Accounts Wings is headed by the Additional Director (Admn.). He reports in administrative/accounts matters to the Director of

Industries. He is further assisted by Assistant Controller (F&A), Superintendent(s) Gr.-I & II and by ministerial and other staff.

(iii) Industrial Development Wing

In this wing Industrial Advisor, Joint Director of Industries and Deputy Directors, report to the Director of Industries for the development of industries in the State. The Officers of these wings are further assisted by Managers, Industrial Promotion Officers, Superintendent (s) Gr.-II, ministerial and other staff.

(iv) Sericulture Wing

The Sericulture Wing is headed by the Dy Director (Sericulture) at the Directorate level. He reports to the Director of Industries for Sericulture development. He is further assisted by Superintendent(s) Gr.-II, ministerial and other staff.

(v) Handloom Wing

The Handloom Wing is headed by a Industrial Advisor who reports to the Director for Handloom (Director of Industries) and is further assisted by SIO (Textiles), Superintendent Gr.-II, ministerial and other staff.

(vi) Geological & Mining Wing

The Geological and Mining Wing is headed by the State Geologist. He reports to the Director of Industries for mineral exploration/regulation works. He is further assisted by Geologists, Assistant Geologists, Superintendent Gr.- I & II, ministerial and other staff.

2.4 The organisational set up in the field offices of the Department of Industries is as under:—

(i) District Industries Centres

The District Industries Centre are headed by General Managers. They are further assisted by Managers, Industrial Promotion Officers, Economic Investigators, Extension Officers(Industries) at Block level, ministerial and other

staff.

In order to provide facilities to entrepreneurs close to their places of work, Single Window Clearance Agencies were functioning at Parwanoo, Baddi Nalagarh in Solan District, Paonta Sahib, Kala Amb in Sirmaur District, Gwalthai in Bilaspur District and Sansarpur Terrace, Damtal in Kangra District.

(ii) Mining Offices

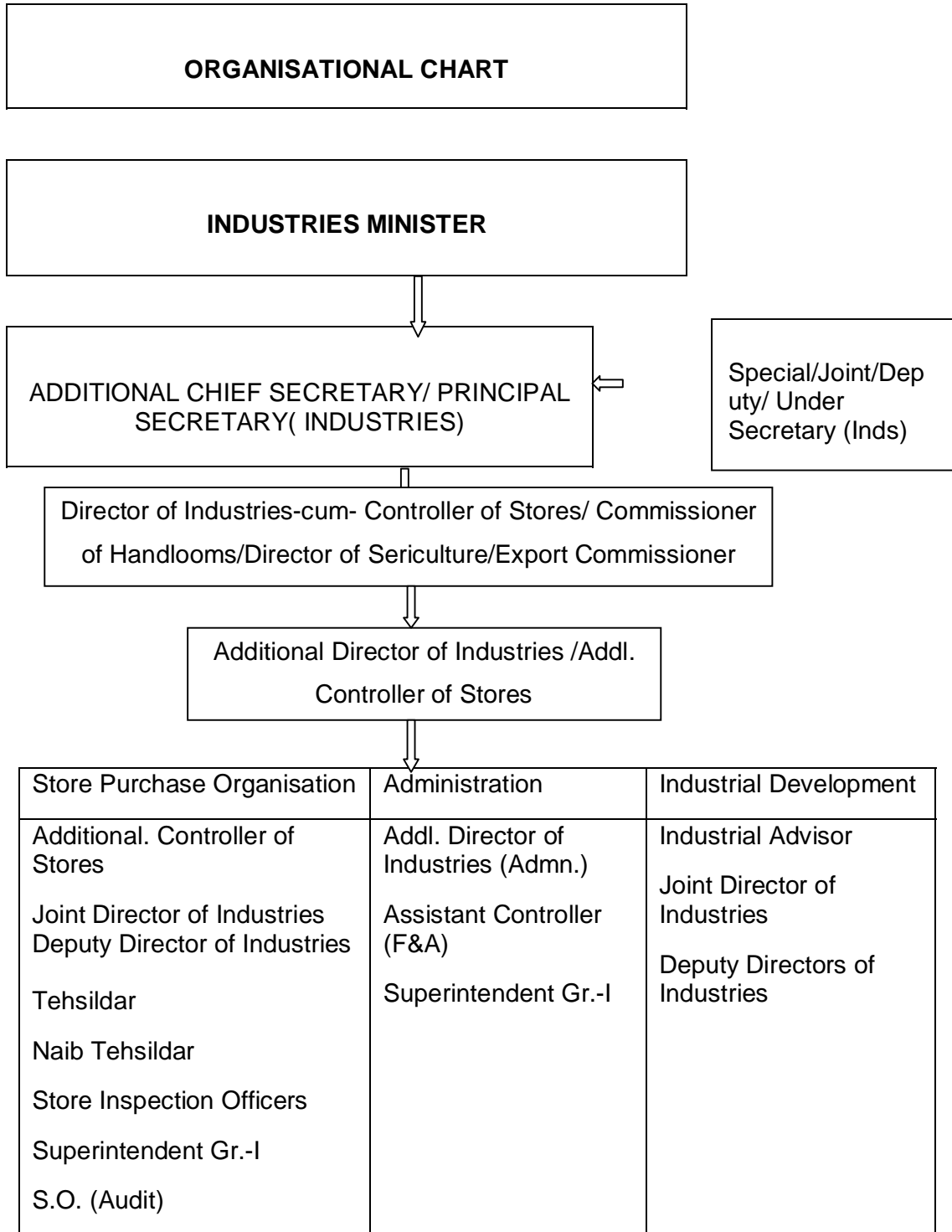
The Mining Office is headed by a Mining Officer. He is assisted by Mining Inspectors, Asstt. Mining Inspectors, Mining Guards and ministerial and other staff. Further more, the Drilling operations are supervised by Drillers who are assisted by Asstt. Drillers and Laboratory Assistants.

(iii) Sericulture Offices

The Deputy Director of Industries (Sericulture) looks after the sericulture development activities at the Directorate level. The Sericulture Wing has 7 divisions. The Deputy Director (Sericulture) heads the Shimla Division, Silk Seed Promotion Officer, Nadaun heads the Nadaun Division besides holding additional Charge of Dehra Division. The General Manager, DICs, Mandi and Sirmaur hold the additional charges of Mandi and Nahan Divisions respectively. The Charge of the Ghumarwin Division is with the Silk Seed Production Officer. These Officers are further assisted by Sericulture Officers, Development Officers, Technical Officer (Tassar), Sr. Sericulture Inspectors, Extension Officers (Tassar), Technical Assistants (Tassar), ministerial and other staff.

2.5 Organizational chart:-

The organizational chart of the Industries Department is as indicated below:—



Geological & Mining	Sericulture	Handloom
State Geologist Geologists Assistant Geologists Driller Superintendent Gr.-I S.O (Audit) Assistant Driller Lab Assistant	Deputy Director of Industries(Seri.)	Industrial Advisor

Field Offices

District Industries Centre	Mining	Sericulture
General Managers Managers/ Member Secretaries, SWCAs, Parwanoo, Baddi, Nalagarh, Paonta Sahib, Kala Amb, Sansarpur Terrace, Damtal & Gwalthai Industrial Promotion Officers Economic Investigators Extension Officer (Industries) (Block Level)	Mining Officers Mining Inspectors Assistant Mining Inspectors Mining Guards	Deputy Director of Industries (Seri)/ GMDICs /Managers Silk Seed Production Officers Sericulture Officers Development Officers Technical Officer (Tassar) Sr. Sericulture Inspectors Extension Officer (Tassar) Technical Assistant (Tassar)/Sericulture Inspector.

2.6 The total sanctioned strength of officers & employees in the Department of Industries is given at Annexure - A. The contact details of the Officers of the Department are at Annexure-B.

2.7 The following six Board/Corporations are functioning under the administrative control of the Industries Department: —

I. H.P. State Industrial Development Corporation Ltd. (HPSIDC).

II. H.P. Financial Corporation Ltd. (HPFC).

III. H.P. State Handicrafts & Handloom Corporation Ltd.(HPSH&HC)

IV. H.P. State Small Scale Industries and Export Corporation Ltd. (HPSSI&EC)

V. H.P. General Industries Corporation Ltd.(HPGIC)

VI. H.P. Khadi and Village Industries Board.(HPKVIB)

CHAPTER – 3

INDUSTRIAL POLICY FRAMEWORK

3.1 INDUSTRIAL POLICY HIGHLIGHTS

The State Government has consciously adopted an approach to selectively encourage industrial development in the State so as to generate employment opportunities for local persons. The State Government has announced its strategy for industrial development in the form of its Industrial Policy statement 2004 which is currently in force, and has also been modified from time to time in line with requirement of changing economic scenario. The State Government on 7th February 2009 has also again amended Incentive Rules, 2004 to include Biotechnology process based industrial & non-industrial products, Processing Laboratories and R&D facilities as Thrust Industries and has since also liberalized the process of transfer of industrial plots/sheds in the Industrial Areas/Estates. The main highlights of the existing Industrial Policy are as under:—

Objectives of the Industrial Policy:

The objectives of the incentives concessions and facilities being provided are as under :

1. Serve as a guideline for achieving the objective of uniform growth of industry and service sector throughout the State.
2. Disperse industries and service sector activities.
3. Cull together ingredients of an Industrial Policy so as to facilitate generation of employment opportunities for local resource owners and stakeholders.
4. Clearly state Government's commitment and approach to the development of key infrastructural sectors like Power, Housing, Social Infrastructure Development, Human Resource Development and Vocational Education so as to create a congenial investment climate for existing industry to grow as well as to attract further investments in the State.
5. Clearly spell out Industrial Incentives of fiscal nature.
6. To facilitate the ease of doing business by simplifying the Rules to provide transparency of procedures governing the establishment of Industrial Enterprises in the State.

3.2 CATEGORISATION OF THE STATE

Presently, the State has been categorized into three categories 'A', 'B' & 'C' depending upon the location, distance from the border of adjoining States, extent of industrial development, extent of overall backwardness of the block resource availability & potential for employment generation for local people. Category "A" areas are partly included in four Development Blocks of Poanta Sahib and Nahan in Sirmaur District and Dharampur and Nalagarh in Solan District excluding backward panchayats notified by the State Govt. Category "B" areas include 49 full Development Blocks located in 10 non-Tribal Districts and part of the four Development Blocks included in Category A areas excluding backward panchayats located in these areas. Category "C" areas (Tax Free Zones) include 24 Development Blocks including all the seven Tribal Development Blocks in Kinnaur, Lahaul & Spiti and Chamba Districts and 17 other Development Blocks in Chamba, Kullu, Mandi, Shimla and Sirmaur Districts and also includes all Backward Panchayats located in Development Blocks under the 'A' and 'B' Category areas. Graded incentives have been provided for Industry in the New Industrial Policy in terms of fiscal incentives. The main fiscal incentives being provided are Sales Tax, Electricity Duty Concessions. Under Sales Tax Incentives 1% CST is being charged from all industrial enterprises upto 31.03.2013 or till the CST is not phased out, 100 % deferment or payment of 65 % of the applicable rate of VAT has been provided in 'A' and 'B' category areas for a period of 5/8 years respectively whereas it is exempted in 'C' category areas for 10 years. Additional incentives have been provided for Thrust sector industries in 'B' & 'C' category blocks in terms of allotment of land at concessional rates & interest subsidy. These include out of turn allotment of plots/land /sheds in industrial areas/estates, exemption from payment of State Excise Duty for a period of 7 years to New Thrust industrial enterprises set up as Micro and small enterprises are manufacturing wine/ cider out of locally produced fruits and Interest subsidy @5 % P.A. on term loan with a ceiling of Rs. 2 lakhs P. A. for a period of 3 years for Horticulture produce, Vegetable produce, Maize based and herbal based industries. The incentives also being provided to specified category of activities after fulfilling the certain criterion. Category 'C' areas of the State have been declared as Tax Free Zones, which are exempted from the payment of

any State Taxes & Duties excluding levies in the shape of cess, fees, royalties etc. for a period of 10 years.

3.2.1 THRUST SECTOR

The following categories of industrial units have been kept in the Priority Sector:—

1. The Enterprises based directly on horticulture produce including hops and tea.
2. Mineral water bottling.
3. Automobile manufacturing units including assembly units which have a minimum of 5 ancillary units substantially dependant on it.
4. Cold storage units/chain.
5. Fruit/vegetable/herbs/ honey/spices based wineries.
6. Production of Ciders/ale/ liqueurs.
7. Sericulture /Handlooms/Khadi industry related manufacturing industrial activities.
8. Electronic units including computer software and information technology except assembling units where value addition is less than 15%.
9. Floriculture.
10. Medicinal herbs and aromatic herbs etc. processing.
11. Horticulture, Maize based industries, herbal based industries and Agro Based Industries excluding those included in the negative list.
12. Food Processing Industry excluding those included in the negative list.
13. Sugar and its by-products.
14. Silk and silk products.
15. Wool and wool products
16. Woven fabrics (Excisable garments)
17. Sports goods and articles and equipment for general physical exercise and equipment for adventure sports/activities, tourism.
18. Paper & paper products excluding those in negative list (as per excise classification)
19. Pharma products.
20. Information & Communication Technology Industry, Computer hardware, Call Centres, I.T. Software and services.

21. Eco-tourism- Hotels, resorts in locations other than those located in the Municipal limits/NAC /Nagar Panchayats/Special Area Development Authority limits, as the case may be of Shimla, Dalhousie, Macleodganj and Manali.
22. Spa, entertainment/amusement parks ropeways etc.
23. Industrial gases (based on atmospheric fraction).
24. Handicrafts.
25. Non-timber forest product based industries.
26. Precision Industries.
27. Enterprises to manufacture industrial products by any biotechnology process and Processing Laboratories or Research & Development activity related to processing, scale-up, other innovations and products in the field of Biotechnology, as approved by State Level Single Window Clearance and Monitoring Authority on the recommendation of the Department of Environment, Science and Technology of the State Government.

Note:— Products listed from Serial No. 9 to 24 are as reflected in Government of India, Ministry of Industry and Commerce O.M. dated 7/01/03 and as defined by Government of India from time to time.

3.2.2 PACKAGE OF CONCESSIONS, INCENTIVES & FACILITIES TO SMALL SCALE ENTERPRISES IN THRUST SECTOR (EXCLUDING UNITS IN NEGATIVE LIST)

New Thrust Industrial Enterprises located in "B" and "C" category areas are be eligible for:—

- i) Out of turn allotment of land/plot/ industrial sheds.
- ii) Allotment of land/plot/ industrial sheds @50% of the normally applicable premium as may be determined by the Government from time to time for the general category of industries.
- iii) Exemption from the payment of State Excise Duty for a period of 7 years to New Thrust Industrial Enterprises manufacturing wine/cider by using locally produced fruits.

New Thrust Industrial Enterprises based on Horticulture/Vegetable /Maize/ herbal produce enterprises and located in 'B' and 'C' category areas are entitled for the following additional incentives such Interest subsidy @5 % p.a. on term loan, with a ceiling of Rs. 2 lakh p.a. for a period of 3 years.

Biotechnology related Thrust Enterprise(s) are also governed by the procedure of the Department, as applicable to other Industrial Enterprises with

regard to approval/acknowledgment, processing of applications for the purchase of private land, allotment and transfer of industrial plots/land/sheds in the Industrial Areas/ Estate including Biotechnology Parks/ Estates etc. of the State, release of electricity & water connections and other infrastructural requirements. The Department of Environment, Science and Technology of the State Government is the Nodal Department for receiving, processing and recommending the applications of such Thrust Enterprise(s) to concerned Departments/ Boards/ Corporations of the State and Central Government, as the case may be, wherever required. The Scheme of Incentives, Concessions and Facilities under Incentive Rules-2004 as provided to other Industrial Enterprises are also available to Biotechnology related Thrust Enterprise(s). Such New Thrust Enterprise(s) located in 'B' and 'C' category area are eligible for the following additional incentives:-

- i) Out of turn allotment of land/plot/ industrial sheds.
- ii) Allotment of land/plot/ industrial sheds @50% of the normally applicable premium as may be determined by the Government from time to time for the general category of industries.
- iii) Interest subsidy @5 % p.a. on term loan, with a ceiling of Rs. 2 lakh p.a. for a period of 3 years.

3.2.3 ADDITIONAL INCENTIVES TO SPECIAL CATEGORY OF ENTREPRENEURS FOR SETTING UP OF NEW INDUSTRIAL ENTERPRISE(S) IN MICRO AND SMALL SECTORS:

Special Category Entrepreneurs means entrepreneurs belonging to the Scheduled Castes, Schedule Tribes, Women, Ex-servicemen, Physically Handicapped persons (with a disability of more than 50%), BPL family category who set up new industrial unit(s) themselves. Such entrepreneurs are entitled to the following additional concessions/ facilities:—

- a) Reimbursement of 90% expenditure incurred towards the cost of preparation of feasibility report with a ceiling of Rs.25, 000/- in each case.
- b) 100% subsidy on the carriage and installation cost of the plant and machinery.
- c) Special Investment Subsidy @ 10% on Fixed Capital Investment (FCI) subject to a maximum of Rs. 1,00,000/-.
- d) Interest subsidy @ 5 % on term loan availed from the Financial Institution(s) as per original repayment schedule with a ceiling of Rs.

50,000 p.a. for a period of 3 years. This interest subsidy will be made available for "Specified Category of Activities" (as listed in Annexure-IV) with FCI upto Rs. 25 lakhs. No interest subsidy will be paid on defaulted installments and the period of default will be counted for determining the ceiling of 3 years viz. interest subsidy will be admissible for the first 3 years of the original repayment schedule finalized by the Financial Institution at the time of sanctioning of loan.

3.2.4 SCHEME FOR REGISTRATION OF AGRO/ HORTICULTURE PRODUCE/ TOURISM AND OTHER ALLIED SECTORS AS 'SPECIFIED CATEGORY OF ACTIVITIES':

The Department register certain activities related to commercial exploitation and value addition of Agro/Horticulture/Animal Husbandry/ Pisciculture /Sericulture/ Floriculture/Bio-Technology/Agri-business/Tourism and other allied sectors as 'Specified Category of Activities' promoted by bonafide Himachalis and certified as such by the concerned Government Department(s).

The following incentives and concessions will be available to such New Enterprises registered on permanent basis as a Specified Category of Activities:

- i) Concessional rate of Electricity Duty.
- ii) Interest subsidy @5 % p.a. on term loan and working capital with a ceiling of Rs. 1 lakhs p.a. for a period of 3 years.
- iii) Fixed Capital Investment Subsidy @ 15% subject to a maximum of Rs. 5 lakhs on cost of structure, building, plant and machinery.
- iv) Sanction of water and electricity connection on priority.
- v) Exemption from the payment of Luxury Tax and Entertainment Tax (as applicable) for a period of 5 years from the date of commencement of commercial production.

3.3 CENTRAL GOVERNMENT INCENTIVES:—

The Ministry of Commerce & Industry, Department of Industrial Policy & Promotion (DIP&P) notified the following Package of Incentives for the States of Uttarakhand and Himachal Pradesh on 7/1/03. The main highlights of the Package admissible as on date are as under:—

- 15% Capital Investment Subsidy on the investment made in plant & machinery subject to a ceiling of Rs. 30 lakh per unit. This incentive is

presently applicable to the units, which commence commercial production or undertake substantial exemption on or after 7.1.2003 and ending on or before 6.1.2013. The Himachal Pradesh State Industrial Development Corporation as Nodal Agency by the Govt. of India for channelizing funds under the sector

- 100% Income Tax Exemption for initial period of 5 years and thereafter 30% for companies and 25% for other than companies for a further period of 5 years from the date of commencement of commercial production. This incentive is presently applicable to the units, which commence commercial production or undertake substantial exemption on or after 7th day of January, 2003 and ending before 1st day of April 2012.

(These incentives are admissible for all locations in case of thrust industries and in specified locations for other industries except 20 categories of industries falling in the negative list)

3.3.1 Central Transport Subsidy :

Industrial units located in the State are reimbursed 75% of the cost of transportation of their raw materials/ finished goods to and from the location of their units anywhere in the State to the nearest specified broad gauge rail head under the Central Transport Subsidy scheme. This subsidy is available for a period of the 5 years from the date of commencement of production. The H.P. State Industrial Development Corporation Ltd. has been designated as Nodal Agency for channelising funds to the State under the Scheme.

CHAPTER – 4

MAJOR PROGRAMMES AND SCHEMES

4.1 SMALL SCALE INDUSTRIES

4.1.1 The spectrum of industries in the country extends from the organized Large Scale industries to modern Micro, Small & Medium Enterprises (MSME) and unorganized traditional industries. The last two i.e. modern MSME and unorganized traditional industries earlier known as Village and Small Industries (V&SI) constitute an important segment of the State economy. The Village and Small Industries Sector provides maximum employment which is next only to the agricultural sector in the State. In terms of value added, it is estimated to contribute about 50% of value added in the manufacturing sector. The growth in this sector, besides resulting in self-employment and wider dispersal of industrial and economic activities, ensures maximum utilization of local resources both human and material.

4.1.2 The Micro, Small & Medium Enterprises Development Act, 2006 received the assent of the President on 16-6-2006. This Act was made applicable from 2-10-2006 as notified vide notification no. 2(3)/2006(F)SSI dated 18-7-2006. The definitions of Micro, Small and Medium Scale Industrial enterprises in manufacturing and services sectors were notified vide notification no. 4(1)/2006-MSME Policy I dated 29-9-2006. As per the new definitions, the classification of enterprises is as under:-

Sr. No.	Classification of industrial enterprises	Limit for manufacturing enterprises.(In plant & Machinery)	Limit for services enterprises.(In plant & Machinery)
1	Micro enterprises	is up to Rs. 25 lakh	up to Rs.10 lakh
2	Small enterprises	Above Rs. 25 lakh and up to Rs.5 crore.	Above Rs. 10 lakh and up to Rs.2 crore.
3.	Medium enterprises	Above Rs. 5 crore and up to Rs.10 crore.	Above Rs. 2 crore and up to Rs.5 crore.
4.	Large enterprises	More than Rs.10 crore.	More than Rs.5 crore.

4.1.3 The Act also replaces provisional and permanent registrations with filing of Entrepreneur's Memoranda Part-I & part-II. The Authorities competent to accept Entrepreneur's Memoranda Part-I are as under:—

Sr. No.	Classification of industrial enterprises	Authorities competent to accept Entrepreneur's Memoranda Part-I
1.	Micro enterprises	Extension Officers/ Economical Investigators (at block level)
2.	Small enterprises	General Managers/Managers/ Industrial Promotion Officers at District level, Dy. Director/Member Secretaries, Single Window Clearance Agencies at SWCA level.
3.	Medium enterprises	General Managers at District level and Dy. Director/Member Secretaries, Single Window Clearance Agencies at SWCA level. The Entrepreneur will also apply for the approval of State Level Single Window Clearance & Monitoring Authority.
4.	Large enterprises	The Director of Industries at State level. The approval of State Level Single Window Clearance & Monitoring Authority is also required.

4.1.4 However the filing of Entrepreneur's Memorandum is not compulsory in all cases. The following table gives details where filing of Entrepreneur's Memorandum is optional/ compulsory.

Sr. No.	Classification of industrial enterprises	Filing of Entrepreneur's Memoranda for various enterprises	
		Manufacturing enterprises	Service enterprises
1.	Micro enterprises	Optional	Optional
2.	Small enterprises	Optional	Optional
3.	Medium enterprises	Compulsory	Optional
4.	Large enterprises	Compulsory	Compulsory

4.1.5 Approval by State Level Single Window Clearance and Monitoring Authority (SLSWC& MA)

In order to ensure expeditious clearances from the respective Departments for the setting up of new enterprises, a State Level Single Window Clearance and Monitoring Authority (SLSWC&MA) has been constituted

under the Chairmanship of Hon'ble Chief Minister to clear projects in-principle and ensure speedy approval from various Departments or Agencies. Approval of large scale enterprises, Negative listed enterprises, Forest based enterprises, Extensive power consumption enterprises (power consumption more than 1000 KW is done by SLSWC &MA.

4.1.6 Authorities competent to accept Entrepreneur's Memoranda Part-II:-

An entrepreneur who has set up a micro/small enterprise and medium enterprise in service sector may file an entrepreneur's memorandum Part-II at the SWCA level or District level depending upon the location where such enterprise has been set up. An entrepreneur who has set up a medium enterprise in manufacturing sector /large enterprise shall file an entrepreneur's memorandum at the SWCA level or District level depending upon the location where such enterprise has been set up as per details given below:-

Sr. No.	Classification of enterprises	Authorities competent to accept Entrepreneur's Memoranda Part-II
1.	Micro and Small enterprises	General Managers at District level, Dy. Director/Member Secretary, Single Window Clearance Agencies at SWCA level.
2.	Medium & Large enterprises	General Managers at District level, Dy. Director/Member Secretaries, Single Window Clearance Agencies at SWCA level.

After the enterprise is about to go into production it may/shall as the case may be depending upon the type of enterprise, file Part-II of the Memorandum EM-II. An existing and functioning enterprise is eligible to apply to file Part-II of the Memorandum EM-II without first filing EM-I. While filing EM Form Part-II the entrepreneur is required to submit a copy of loan sanctioned, date of electricity connection, a copy of the electricity bill, machinery bills, first bill of production of goods/rendering of services, details of employees & their bonafide certificate etc.

4.1.7 The achievements in setting up MSME (Small Scale Industries) during the last three years are as under:-

Sr. No.	Year	No of units set up	Investment (Rs. in lakh)	Employment generated
1.	2008-09	909	73795.48	10939
2.	2009-10	1032	75320.01	110011
3.	2010-11	963	96539.36	10002

District-wise details of three units set up during 2010-11 alongwith their investment and employment is given in the table below:—

Sr. No.	District	No of units	Investment (Rs. in lakh)	Employment generated
1	Bilaspur	41	1067.03	133
2	Chamba	30	453.30	87
3	Hamirpur	50	161.68	134
4	Kangra	111	4686.41	690
5	Kullu	51	236.60	413
6	Kinnaur	9	24.39	27
7	Lahaul& Spiti	4	3.02	14
8	Mandi	97	522.51	427
9	Shimla	75	432.49	209
10	Solan	280	59081.56	5122
11	Sirmour	100	19229.57	1583
12	Una	115	10640.80	1163
	Total	963	96539.36	10002

4.1.8 At present about 37364 Small Scale Industrial units (MSME) have been set up in the Pradesh having capital investment of about Rs. 4573.59 crore and providing employment to about 1,99,582 persons. District wise distribution of SSI/MSME units, investment & employment therein is as under:-

(up to 31-3-2011)

Sr. No.	District	No of units	Investment (Rs. in lakh)	Employment generated
1	Bilaspur	2275	6690.30	8241
2	Chamba	1763	3303.43	6102
3	Hamirpur	2767	6019.35	9941
4	Kangra	8866	32166.54	39271
5	Kullu	2487	5825.15	13125
6	Kinnaur	571	514.62	1789

7	Lahaul& Spiti	576	321.79	1589
8	Mandi	3823	10157.32	15627
9	Shimla	3386	6406.76	12091
10	Solan	4550	275406.10	56093
11	Sirmour	3072	76141.24	19623
12	Una	3228	34407.01	16090
	Total	37364	457359.61	199582

4.1.9 Impact of Special Package of Industries:-

With a view to accelerate the pace of industrialization and to generate more employment opportunities in the Industrial Sector in the State, the Govt. of India had notified a New Package of Incentives for the States of Himachal Pradesh & Uttarakhand on 7th January, 2003. The special package of incentives includes fiscal incentives e.g. Investment Subsidy on Plant & Machinery @ 15% subject to a maximum of Rs. 30 lakh, 100% outright excise duty exemption for a period of 10 years (This component of the package has been withdrawn from 31.3.2010) and 100% Income Tax exemption for a initial period of 5 years and thereafter 30% exemption for Companies and 25% for individuals for another period of 5 years to new units as well as units undertaking substantial expansion.

After the notification of Special Package in January 2003, the State has provisionally registered 13294 proposals in Small Scale/MSME Sector with proposed investment of Rs. 10006.33crores and employment potential of 314317 persons up to 31/3/2011. Table below gives District-wise details of units provisionally registered units since the inception of package up to 31/3/2011.

District	During 2010-11			Cumulative since 7-1-03 to 31-3-2011		
	No of units	Investment (Rs in lakh)	Proposed employment	No of units	Investment (Rs in lakh)	Proposed employment
Bilaspur	31	1303.32	313	582	19989.28	8946
Chamba	18	374.05	191	242	5342.28	3936
Hamirpur	44	654.70	450	378	4895.20	3641
Kangra	121	7626.10	1406	1088	52973.57	16502
Kullu	65	2312.51	773	511	9505.18	4753

Kinnaur	3	48.60	29	70	343.03	574
Lahaul & Spiti	4	53.47	27	25	122.80	130
Mandi	66	3271.63	694	862	10203.09	8215
Shimla	28	2848.22	473	612	13468.35	6222
Solan	271	35224.32	5357	5720	621029.90	168215
Sirmaur	75	6840.64	1018	1510	130706.37	41120
Una	107	10649.79	1853	1694	132054.43	52063
Total:	833	71207.35	12584	13294	1000633.48	314317

The year- wise summary of the provisionally registered cases w.e.f.7-1-2003 is as under:-

Sl. No.	Year	No of units	Proposed Investment (Rs in lakh)	Proposed employment
1.	7-1-03 to 31-3-03	406	15637.88	8908
2.	2003-04	1734	67531.88	39351
3.	2004-05	2018	162095.8	39522
4.	2005-06	1937	98405.83	39606
5.	2006-07	1867	140981.61	47568
6.	2007-08	1810	141030.97	48077
7.	2008-09	1010	104187.39	34672
8.	2009-10	1679	199554.77	44029
9.	2010-11	833	71207.35	12584
	Total	13294	1000633.48	314317

4.1.10 Expansion Proposals approved:- Besides, since the notification of special Package of Incentives, 257 expansion proposals have been approved. The year- wise details of these proposals are given below:-

Sl. No.	Year	No of units	Proposed Investment (Rs in lakh)	Proposed employment
1.	Up to 2004-05	104	1722.78	1138
2.	2005-06	81	4293.8	1845
3.	2006-07	42	869.24	294
4.	2007-08	10	499.47	86
5.	2008-09	7	113.42	34
6.	2009-10	10	15702.29	105
7.	2010-11	3	85.20	33
	Total	257	23286.2	3535

4.2 LARGE SCALE INDUSTRIES

4.2.1 An industrial undertaking in which the investment in fixed assets in Plant & Machinery exceeds the limit for medium enterprises is classified as large scale industry. At present there are 471 Medium & Large Scale units registered in the State having capital investment of about Rs 8918.55 crore and providing employment to about 55823 persons.

4.2.2 Major National Industrial houses like ACC, Gujarat Ambuja Cements Ltd., Birla, Dabur, Vardhman, Mohan Meakin, Eicher, HFCL, Godrej, Lucky Star Entertainments, Wipro, Hindustan Lever Ltd., Cipla Ltd., Unichem Laboratories, Wodkhardt Ltd., Havell's India Ltd. , Ajanta India Ltd., Alembic Ltd., Johnson & Johnson, Titan Industries, Colgate Palmolive India Ltd., Dabur India Ltd. , Indo-Asian Switchgear, Cadbury, Steelbird, Cadila Healthcare and franchises of various electrical appliances/sports shoes manufacturers such as LG, Bajaj, Philips, Phoenix Udyog, Maharaja, Kapkon Electronics, Revere Pentland, Lee Cooper, Action etc. have already started commercial production. More and more Industrial Houses have opted for investment in the State. The State Government would welcome projects, which generate employment for our people, add revenue to the State, are non-polluting in nature and are based on gainful exploitation of local resources.

After the notification of Special Package in January 2003, the State has approved 1019 investment proposals in Medium & Large Scale Sector with proposed investment of Rs. 31177.57crore and employment potential of 170041persons up to 31/3/2011. During the year 2010-11, 15 projects were approved in Medium & Large-Scale Sector having capital investment of Rs. 1436.59 crore and employment potential of 5619 persons. The details for the last nine years are given in the table below:-

Sl. No	Year	No. of projects	Investment (Rs in crore)	Proposed employment
1	2002-03	37	385.2	5624
2	2003-04	247	3561	38867
3	2004-05	225	3355.44	28208

4	2005-06	244	5411.3	37390
5.	2006-07	145	6728.8	27004
6.	2007-08	28	2746.69	4996
7.	2008-09	48	6230.91	14612
8.	2009-10	30	1321.64	7721
9.	2010-11	15	1436.59	5619
	TOTAL	1019	31177.57	170041

In addition, 154 proposals of substantial expansion involving an investment of Rs 2879.90 crore and employment potential of 11934 persons were also approved. The details for the last nine years are given in the table below:—

Sl. No	Year	No. of projects	Investment (Rs in crore)	Proposed employment
1	2002-03	0	0	0
2	2003-04	15	21.18	384
3	2004-05	37	356.21	1735
4	2005-06	15	277.4	1158
5.	2006-07	9	181.3	429
6.	2007-08	3	24.52	126
7.	2008-09	27	951.02	3437
8.	2009-10	35	506.07	2758
9.	2010-11	13	562.20	1907
	TOTAL	154	2879.90	11934

Total investment approved from 7/1/2003 to 31/03/2011

Sl. No	Sector	No. of projects	Investment (Rs in crore)	Proposed employment
1	SSI/MSME	13294	10006.33	314317
2	M&L	1019	31177.57	170041
3	M&L-Expansion	(154)	2879.90	11934
4	SSI-Expansion	(257)	232.86	3535
	TOTAL	14313 (411)	44296.66	499827

4.2.3 State Level Single Window Clearance and Monitoring Authority (SLSWC&MA):-With a view to provide umbrella support to existing and new ventures, the State Govt. had notified a State Level Single Window

Clearance and Monitoring Authority during 2003-04.

Four meetings of this Authority were held during the year 2010-11 and 32 proposals with an investment of Rs. 1505.97 crore and employment potential of 6189 were approved. The meetings of this Authority are being held frequently on monthly basis so as to ensure that the pending proposals lying with the Industries Department are approved expeditiously.

In all, the State Level Single Window Clearance & Monitoring Authority (SLSWC & MA) has so far approved 864 proposals with an investment of Rs 27850.51 crore with an employment potential of 138124 persons upto 31-3-2011.

Sl no.	Year	No. of meetings	No. of units approved.	Proposed investment (Rs in crore)	Proposed employment
1.	2003-04	2	30	541	4459
2.	2004-05	9	232	3625	28083
3.	2005-06	8	227	5441	36857
4.	2006-07	7	160	4971	25283
5.	2007-08	3	28	3269.31	4712
6.	2008-09	7	76	6848.01	21255
7.	2009-10	11	79	1649.22	11286
8.	2010-11	4	32	1505.97	6189
	Total	51	864	27850.51	138124

4.2.4 Achievements during the last three years actually setting up of Medium & Large Scale Sector:-

Sr. No.	Year	No of units set up	Investment (Rs. in crore)	Employment generated
1.	2008-09	46	1141.03	4225
2.	2009-10	23	1343.82	2703
3.	2010-11	27	2118.33	3740

4.3 INFRASTRUCTURE DEVELOPMENT

4.3.1 In order to provide infrastructural facilities to the entrepreneurs, 40 industrial areas have been established at Bilaspur, Gwalthai, Garnota, Hatli, Hamirpur, Nadaun, Nagrota Bagwan, Sansarpur Terrace, Nagri, Dhaliara, Bain Attarian, Badhal, Raja-Ka-Bag, Nargala Jawali, Shamshi, Rekong Peo, Sauli Khad (Mandi), Ratti, Bhambala, Maigal, Shoghi, Maindli, Jais, Jubber Hatti, Paonta Sahib, Kala Amb, Baddi, Barotiwala, Chambaghat, EPIP Baddi (Ph- I & II), Banalgi, Mamlig, Katha Bhatoli, Mehatpur, Amb, Tahliwala, Gagret and Jeetpur Bheri.

4.3.2 Similarly 15 industrial estates have been developed with the relevant infrastructure facilities at Sultanpur, Parel, Shivnagari (Holi), Kangra, Dehra, Jawali, Keylong, Saigloo, Pali, Pandranu, Raighat, Sunda Bhonda, Parwanoo, Chambaghat and Dharampur.

4.3.3 To attract investment in the State and to ensure easy availability of land to prospective entrepreneurs in various parts of the Pradesh, the Department has constituted a Land Bank comprising of government and private land which are available for setting up of Industries. The private Land Bank comprises of such land whose owners have consented to sell their land to private Entrepreneurs through mutual negotiations. The Department of Industries will provide escort and facilitation services in case the Entrepreneurs are willing to purchase such private land. Presently more than 8,000 Bighas of land has been identified in eight Districts namely Hamirpur, Sirmour, Kangra, Una, Mandi, Bilaspur, Shimla & Solan.

4.3.4 Assistance to States for creating Infrastructure for the Development and growth of Exports (ASIDE Scheme)

Exports have come to be regarded as an engine of economic growth in the wake of liberalization and structural reforms in the economy. A sustained growth in exports is, however, not possible in the absence of proper and adequate infrastructure. Adequate and reliable infrastructure is essential to facilitate unhindered production, cut down the cost of production and make our exports internationally competitive. Hence, ASIDE Scheme was

launched by the Ministry of Commerce and Industry, Department of Commerce, Govt. of India, from the year 2002-03 to assist State Govts in creating infrastructure for the development and growth of exports. During the year 2010-11 an amount of Rs 570 lakh was made available by the Govt. of India under this scheme. Against this allocation, the details of works approved by the State Level Export Promotion Committee (SLEPC) are as under:-

SI No	Name of the Agency.	Works approved	Amount approved (Rs in lakh)
1	HP State Industrial Development Corporation Ltd.	1	175.41
2	HP Public Welfare Department	2	245.34
3	BBNIA	1	900.00
	Total	4	1320.75

An amount of Rs 4873 lakh has been released by the Govt. of India during the last eight years. The details of funds received and works approved are given in table below:-

SI no.	Year	Amount Received (Rs in lakh)	Works awarded to HPSIDC/HPSEB/HPPWD	Amount utilized. (Rs in lakh)
1	2002-03	700	23	621.08
2	2003-04	750	25	519.46
3	2004-05	500	14	843.40
4	2005-06	553	11	552.49
5.	2006-07	600	13	892.18
6.	2007-08	600	7	236.68
7	2008-09	600	5	391.44
8	2009-10	570	6	344.54
9	2010-11	570	4	414.68
	Total	5443	108	4815.95

An amount of Rs. 273.30 lakh has also accrued as interest during the last eight years. This amount is being spent alongwith the funds received under

the scheme in Districts Solan ,Una and Sirmour which are the main Industrial Corridors having exporting units.

4.3.5 Setting up of Trade Centre at Baddi

In order to give a common platform to exporters, a Trade Centre is being set up with an estimated cost of Rs 1081 lakh with GOI assistance of Rs Rs 540 lakh from 20% Central Component of ASIDE scheme. The Baddi Barotiwala Nalagarh Development Authority (BBNDA) is executing this work. The State Govt. has contributed Rs 320 lac in the form of land and Rs 221 lac will be contributed by BBNIA. The work is in progress.

4.3.6 Setting up of Truck Parking at Sandholi, Baddi

There has been spurt in industrialization activities in Baddi, Barotiwala and Nalagarh area the transportation activities have also increased. Hence, a need has been felt for truck parking space in the area. A proposal for setting up of Truck Parking at Sandholi, Baddi costing Rs 11.845 crore has been sent to Government of India for approval so as to facilitate unhindered transportation of goods.

4.3.7 Drug and Pharma Cluster at Baddi, District Solan Covering setting up of a Common Effluent Treatment Plant (CETP) and upgradation of roads at Baddi.

Government of India, Ministry of Commerce and Industry, Department of Industrial Policy & Promotion (DIP&P) has accorded final approval to the setting up of Pharma and Allied Industries cluster covering setting up of a Common Effluent Treatment Plant (CETP) and upgradation of roads costing Rs. 80.50 crore at Baddi, District Solan on 19/11/10. The details of approved cost sharing pattern is as under:

(Rs in Crore)

Contribution by GOI	Industries Contribution	State Govt Contribution	Term Loan	Total
58.28	9.22	7.00	6.00	80.50

4.3.8 Setting up of Mini Tool Room cum Training Centre at Baddi

The Project Monitoring Committee (PMC) formed for the implementation of Mini Tool Room Scheme of Ministry of MSME, Government of India has accorded in-principle approval for the setting up of Mini Tool Room at Baddi under Model-I of the scheme. Final Report has also been forwarded by Central Tool Room to the PMC for approval. The Ministry of MSME has invited Requests for Qualifications(RFQ) for the setting up of the Mini Tool Room.

4.3.9 Setting up of an Inland Container Depot at Baddi:

To provide facilities like warehousing, storage, custody and handling of cargo to the industrial units established in the State, a Memorandum of Understanding (MOU) has been signed between State Govt and the Container Corporation of India on 17th October, 2008 for the establishment of Inland Container Depot (ICD) at Baddi. The total cost for its establishment is Rs. 57.45 crore. This will include setting up of warehouses, administrative buildings, railway siding, installation of heavy machinery and equipment etc. The State Government has transferred 86 bighas (65240 Sq. mts) of Government land to CONCOR at nominal lease of Re. 1/- per acre per annum for 95 years. CONCOR will be responsible for the storage/custody/cargo handling/custom clearances. It will also manage all warehousing activities and will be responsible for storage, custody, handling of the cargo at Container Freight Station and customs clearance. The CONCOR will also bear the cost of customs. Thus CONCOR will provide a single window service to customers and fix tariff for booking/delivery/handling/ transporting/warehousing of container and of cargo. The establishment of a Container Freight Station and ICD in Baddi region of Himachal Pradesh will give a tremendous boost to the development and growth of industrialization and exports from the region. Construction work of Inland Container Depot has been completed and the work for construction of approach road of ICD will be started shortly.

4.3.10 Supply of Gas to Industrial Units situated in the State by GAIL (India) Ltd.

For the supply of 'GAS' as energy to the industrial, transport and domestic sectors in the Pradesh a Co-operation Agreement was signed between GAIL (India) Ltd. and Government of Himachal Pradesh on 4.11.2008. In order to assess the demand for natural Gas liquid hydro carbons & LPG in industrial & transport sector, the major industrial hubs and the existing Cement plants situated at Barmana in District Bilaspur, Darlaghat in District Solan and Rajban in District Sirmaur have been surveyed to assess the demand of energy. The demand for Energy and Power in these areas is growing at a tremendous rate for Industrial, Domestic and Transport sectors. In this area, the industries and allied sector is consuming almost 400 MW of energy and in near future, the requirement of power for these areas is likely to go up considerably as more Industrial activities and Education Institutions will be coming up in this corridor.

4.3.11 Laying of pipeline to supply Natural Gas in H.P. by Petroleum & Natural Gas Regulatory Board (PNGRB):

Baddi-Barotiwala-Nalagarh area alongwith Parwanoo area of the State have been included in the City Gas Distribution geographical area of Chandigarh by PNGRB. In this distribution area industrial, commercial, transport and domestic requirements of the consumers will be met from this gas pipe line. Other areas of the State like Mehatpur, Tahliwala, Amb, Gagret of District Una, Ambuja Cement Plant at Darlaghat (via Arki), JP Cement Plant at Bagha, ACC Plant at Barmana, Harish Chandra Cement Plant at Sundernagar and Lafarge Cement Plant at Tattapani will also be benefited through this project. The possibilities of supplying piped gas to Kala Amb, Nahan & Paonta Sahib will also be explored connecting from Ambala (Haryana). A survey in this regard has also been conducted by Projects and Development India Limited (PDIL). Natural gas is a clean fuel as it creates lesser pollutants as compared to traditional fossil fuels. The pollution would come down drastically once piped natural gas facility is made available to the state of HP.

4.4 HANDLOOM INDUSTRIES

Integrated Handloom Development Scheme

Under “Cluster Approach” component an amount of Rs.28.61 lac as 2nd installment of Central share was utilised by H.P. State Handcrafts and Handloom Corporation and HIMBUNKAR, Kullu for implementation of 2nd phase of Gohar (Mandi) and Kangra Handloom Clusters for benefit of 564 handloom weavers. In addition, an amount of Rs. 32.02 lac was utilised by the said implementing agencies for implementation of 1st phase of Rekong Peo and Rampur Handloom Clusters for benefit of about 600 weavers. During this year (2010-11),3 new project proposals of H.P. State Handicrafts and Handloom Corporation for development of Janjahali (Mandi), Jawali (Kangra) and Tissa (Chamba) Handloom Clusters with a project of Rs. 135.35 lacs for benefit of about 15 handloom weavers have been sanctioned by Government of India.

Under “Group Approach” component, 1st phase of implementation/development of 40 small weavers group was under taken to benefit 580 weavers of Shimla, Mandi, Kangra, Kullu and Chamba districts . An amount of Rs. 1.33 crore was released as Central and State share. In addition, 17 new projects proposals of Kangra, Kullu, and Shimla District with a project cost of Rs. 95.67 lacs for the benefit of about 385 handloom weavers were sanctioned by Government of India.

Under “Marketing Incentive” component, Government of India has released its matching grant of Rs. 1,05,15,974/- in favour of 61 handloom agencies of the State. About 16350 weavers of these agencies have been benefited.

Mahatma Gandhi Bunkar Bima Yojana :-

During this year, 5500 weavers of the State have been enrolled under the Scheme. Rs. 16.70 lac on account of 20 death claims and Rs. 4.62 lac as scholaships in 1051 cases has been paid by the LIC under this scheme.

Health Insurance Scheme:-

During this year about 10000 weavers families were enrolled under the scheme. 2970 Medical claims worth Rs. 34.80 lacs in respect of weavers enrolled during the year 2008-09 and 1668 claims worth Rs. 19.05 lacs in respect of weavers enrolled during the year 2009-10 have been settled by the ICICI Lombard General Insurance Company.

Market Promotion Scheme:-

To promote marketing of handloom products, the Govt. of India has sanctioned 30 Distt. Level Events in favour of H.P. Handicrafts & Handlooms Corporation and HIMBUNKAR, Kullu to organise Exhibition-cum Sale Events in various parts of the State.

4.4.1 .State Schemes.

Grant-in-aid to H. P. State Handicrafts & Handloom Corporation: For undertaking the developmental activities by the Corporation, each year, the State Government provides grant-in-aid to them. Presently the Corporation is running 21 Emporia/Sales outlets in and outside the State, which facilitates the marketing of handicrafts and handloom products manufactured by weavers and artisans of the Pradesh. The corporation is also running 17 production centres to provide pre-loom and post-loom facilities to the weavers and other artisans. During the year 2010-11, an amount of Rs. 284.28 lacs has been provided as GIA to the Corporation.

Grant-in-aid to H. P. Khadi & Village Industries Board: Each year, the State Government provides Grant-in-aid to the Board for undertaking their development activities. The Board is providing financial assistance through credit facilities to the enterprising entrepreneurs engaged in Khadi & Village Industries activities under their Rural Employment Generation Programme and Prime Minister Employment General Programme. Presently the Board is implementing their development activities through field offices in 10 Districts of the State. The Board has four production centres in Mandi (Three Centres) and Kangra Districts and 7 Sales Shops. During the year

2010-11, an amount of Rs. 271.51 lacs has been provided as GIA to the Board.

4.5. List of International/National/State/District level fairs held in the State

During the year funds were released for organizing exhibitions at the following International/National/State/District level fairs:-

Sr. No.	Name of the Fair	Amount Released.	Held during
1.	India International Trade Fair, New Delhi	As per needs.	14th to 27th November every year.
2.	State Level Sombadra Mahotsav, Una	Rs. 25,000/-	April, 2010
3.	Rojgar Mela Rampur/rohru District Shimla	Rs. 18,800/-	April, 2010
4.	Destination Village Solan	Rs. 11,180/-	May, 2010
5.	State Level Shoolini fair, Solan	Rs. 25,000/-	June, 2010
6.	State Level Minjar, Chamba	Rs. 40,000/-	April, 2010
7.	State level Hamir Utsav, Hamirpur	Rs. 15,000/-	September, 2010
8.	Red Cross Fair-2010, District Solan	Rs. 15,000/-	October, 2010
9.	Red Cross Fair-2010, District Mandi	Rs. 7,000/-	October, 2010
10.	National Level Dushara fair, Kullu	Rs. 50,000/-	October, 2010
11.	State Level Renuka Fair, Sirmour	Rs. 35,000/-	November, 2010
12.	Republic day, Shimla	Rs. 35,000/-	January, 2011
13.	State level Nalwari fair, District Bilaspur	Rs. 25,000/-	March, 2011
14.	State Level Holi fair, Sujampur District Hamirpur	Rs. 25,000/-	March, 2011
	Total:-	Rs. 3,26,980/-	

4.6. SERICULTURE INDUSTRY

4.6.1 Importance : Sericulture is an agro- based labour intensive rural cottage industry, which is providing subsidiary employment to the rural people and income by way of rearing silkworms to produce silk cocoons. The hilly topography, agro-climate and socio-economic conditions of the people favour for the development of sericulture in the State. This industry provides means of livelihood to a large section of the rural population. Large rural base in the state-implies an opportunity to generate rural

employment under sericulture. Government policy of India and the states, has always given substantial importance for the development of labour intensive and eco-friendly industries like sericulture.

- The sericulture industry is an environment friendly, effective and socio-economic tool of rural development. Utilise wastelands for productive use by planting mulberry trees on it and so developing a eco- friendly system.
- This is ecological sustainable and commercial viable socio-economic activity in rural areas.
- Mobilise local resources and provides relatively higher cash returns with small investments in short gestation period to the rural family units.
- Treated as a complementary activity and not a competing activity in rural sector.

4.6.2 The Department has setup seven sericulture divisions viz. Ghumarwin, Mandi, Palampur,,Dehra,Nadaun,Sirmour,Shimla under which 70 Sericulture Extension-cum-chawki centres. 83 mulberry farms and 29 mulberry nurseries are functioning in the State. These sericulture centres conduct incubation of silkworm eggs, young age rearing and distribute chawki-reared silkworms to the farmers for late age rearing for production of silk cocoons. Besides distributing mulberry saplings and providing technical guidance to the sericulturists. Currently sericulture is spread over in about 1928 villages and its major concentration is in the district Bilaspur, Kangra, Mandi, Hamirpur, Una and Sirmour. Six silk reeling units under private sector have already been set up in District Kangra (3), Hamirpur(1), Mandi (1) and Bilaspur(1).

4.6.3 The State Government is implementing the following schemes and programs:—

i) Maintenance of department mulberry farms and nurseries of improved varieties for yielding planting material to propagate food plants of silkworms in the nurseries. Leaves produced in the departmental farms are also utilized for departmental young age rearing of silkworms before these young silkworms are distributed to the farmers for further raring to produce silk cocoons.

ii) Distribution of silkworm food plants: One year-old mulberry saplings of improved varieties are distributed to the planters at the nominal price of from the Departmental nurseries. During the year a total 1.28 lakh mulberry saplings were distributed from the Departmental farms. In addition, 6.20 lakh saplings were produced in the private farmers, nurseries that were distributed & planted under various central sponsored programmes like MNREGA and Catalytic Development programme of the Central Silk Board.

iii) Distribution of silkworm :- The Govt. bears the cost of incubation of silkworm seed young silkworms reared for ten days under departmental technical supervision are distributed to the seri-farmers at the nominal price for late age rearing and production of silk cocoons. During the year silkworm seed 5071 ounces were chawki reared and distributed to 8529 sericulture farmers families in two silk cocoons crops.

iv) Disinfection of private rearing houses : Disinfection of private rearing rooms or spaces and rearing equipment and free supply of disinfecting material and rodenticide to the sericulturists for prevention of silkworm diseases and pests.

v) Technical assistance and guidance: Technical assistance and guidance are provide to the sericulturists/ entrepreneurs.

vi) Marketing arrangements : Marketing arrangements are made to fetch a fair price of silk-cocoon produce.

4.6.5. Production Performance: An area of approximately 971-hectare under mulberry plantation was put to use for sericulture purpose. During the year, silkworm seed 5071 ounces was consumed by 8,529 sericulture farmers' families to produce silk cocoons 149.40 m. ton that was converted into 19.20 metric tons raw silk . The overall tangible income from the industry was Rs. 5.03 crore during the period so it is registered an income growth of 64.3% over the last financial year due to increase in prices of silk produces, besides other intangible incomes from the industry.

4.7 STORE PURCHASE PROGRAMME

4.7.1 The Store Purchase Organisation came into existence during the year 1971 when Himachal Pradesh attained Statehood and the arrangement for the Purchase through D.G.S.& D which were available to this territory ceased to be operative. This Organisation was set up under the Department of Industries and its ex-officio Controller of Stores for the Purchase of Stores.

4.7.2 The Store Purchase Organisation is playing a vital role in the industrialization of the State by providing marketing facilities to the local industrial units for the products being manufactured by them which are being purchased for use in Government Departments and autonomous bodies, Corporation etc. against rate contracts issued by this Organisation. Besides, the locally manufactured goods, the Store Purchase Organisation is also entering into rate contracts for other items, which are not being manufactured within the State with outside parties and local suppliers for arranging purchase of quality products at reasonable rates.

4.7.3 This Organisation ensures bulk purchases of products of local industrial units. It is also giving price preference to ensure their growth and economical viability in future. The Small Scale Industrial Units and Cottage Industries, which are located in this Pradesh are being given price preference up to the extent of 15% on their products and medium and large scale industrial units located in the Pradesh are being given price preference to the extent of 3%.

4.7.4 Rate Contract are being finalized under the "Procedure and Rules" for the Purchase of Stores by all Departments and Offices of the Government of Himachal Pradesh. The Achievements of the Controller of Stores for last three years are as under:—

Achievements during the last three years:-

Sl. No.	Year	No. of rate contracts finalised.	No. of firms registered for rate contract with	No. of renewal of registration.
---------	------	----------------------------------	--	---------------------------------

			Industries. Deptt.	
1.	2008-09	62	31	204
2.	2009-10	42	43	219
3.	2010-11	44	32	218

4.8 TWENTY POINT PROGRAMME

4.8.1 The new 20 Point Economic Programme was announced by the then Prime Minister on 14th January, 1982. It focused attention on some of the most important social and economic programmes included in the sixth plan and sought to impart greater dynamism to them. The 20 Point Programme is the real agenda for action before the nation and needs to be implemented in letter and spirit, whole heartedly and with dedication. This programme was again revised in the year 1986 in order to implement this programme more efficiently. While the thrust of the new programme continued to be on providing better living conditions for the less privileged sections of the society, it also aimed at all around improvement in productivity. The Industries Department is implementing two of the points of this programme which are as under: -

Point No. 1 (c) – Permanent Registration of SSI Units(now discontinued).

Point No. 11 (a) – Assistance to Scheduled Caste families.

Point No. 11 (b) – Assistance to Scheduled Tribe families.

4.8.2 Achievements during the last three years:—

Sl. No.	Year	No. of SSI Units registered on permanent basis 1©		No. of Scheduled Caste families assisted-11 (a)		No. of Scheduled Tribe families assisted-11 (b)	
		Target	Ach.	Target	Ach.	Target	Ach.
1.	2008-2009	850	909	2500	2465	300	420
2.	2009-2010	850	1032	2500	2772	330	339
3.	2010-11	900	963	2500	3965	350	430

4.9 TRAINING PROGRAMMES/EMPLOYMENT GENERATION PROGRAMMES

With a view to introducing the entrepreneurial culture at the grass root level and to promote self-employment through establishment of tiny/cottage industries, Entrepreneurship Development Programmes/ Industrial Awareness Programmes are organized at various places across the State for the benefit of rural educated unemployed youth. The main objective of such industrial promotion programmes is to develop the entrepreneurial traits amongst the local rural educated unemployed youth to take up self-employment ventures. The establishment of self-employment ventures have the potential to generate vast employment opportunities for the rural youth near their habitations. In Entrepreneurship Development Programmes women are given special preference and some times special Entrepreneurship Development Programmes(EDPs) are organized especially for the women candidates.

Name of training programme and duration:

Industrial Awareness Programme	-	3 days.
Short term EDP	-	7 days.
Short term product specific EDP	-	14 days.
Long term product specific EDP	-	30 days.

1. Industrial Awareness Programmes (IAPs)

Industrial Awareness Programmes are organized in different parts of the State to generate industrial/business awareness and to educate the prospective entrepreneurs about the latest incentives and facilities offered by the support system. The duration of each programme is three days.

2. Short Term Entrepreneurship Development Programme (EDPs)

The short term Entrepreneurship development programmes are conducted so that the message of industrialization is carried to the general masses especially to the rural educated youth, who are

unaware of the self employment opportunities provided by the industries. The duration of Short Term Entrepreneurship Development Programme is one week.

3. Short term product specific EDP

The short term product specific EDPs are organized for a duration of 2 weeks in which practical training is provided to the trainees in respect of product specific trades such as computer application, mobile repair, fruit and vegetable processing, bag making etc.

4. Long term product specific EDP

Long term EDPs are organized for a period of one month in which detailed practical training is provided to the participants in the trades of Screen Printing, beauty parlours, auto repairs Fashion designing etc.

Indicative list of Training Programmes:

- General Awareness
- Fruit & Vegetable Processing
- Computer Application
- Mobile Repair
- Soft Toys
- Artificial Flowers
- Bag manufacturing(School bags, ladies purse and fancy bags)
- Dhoop manufacturing.
- Namkeen manufacturing
- Candle making
- Umbrella repair and assembling
- Beauty parlours
- Tyre repairs & servicing
- Cushion making
- Screen Printing
- Auto repairs
- Fashion designing
- Tally course for maintaining accounts

The following agencies/organizations are engaged to impart training programmes: -

1. Himachal Pradesh Centre for Entrepreneurship Development (HPCED):

2. Himachal Consultancy Organisation (HIMCON):
3. Himachal Productivity Council (HPC):
4. Small Industries Service Institute (SISI) :

4.9.1 Detail of EDPs/IAPs organized during the last three years are as under:-

Year	Budget Allocation (Rs. in lakhs)				Expenditure incurred on EDPs/IAPs (Rs. in lakhs)	No. of EDP organized	Total No. of persons trained
	Normal Plan	SCP	TASP	Total			
2008-09	8.77	5.00	-	13.77	13.52	38	1011
2009-10	12.965	5.00	3.96	21.925	19.40	49	1253
2010-11	13.00	5.00	3.96	21.96	21.96	65	1479

4.10 Prime Minister's Employment Generation Programme (PMEGP)

1. The Scheme:

The Government of India has approved the introduction of a new credit linked subsidy programme called Prime Minister's Employment Generation Programme (PMEGP) by merging the two schemes that were in operation till 31.03.2008 namely Prime Minister's Rojgar Yojana (PMRY) and Rural Employment Generation Programme (REGP) for generation of employment opportunities through establishment of micro enterprises in rural as well as urban areas. PMEGP will be a central sector scheme to be administered by the Ministry of Micro, Small and Medium Enterprises (MoMSME). The Scheme will be implemented by Khadi and Village Industries Commission (KVIC), a statutory organization under the administrative control of the Ministry of MSME as the single nodal agency at the National level. At the State level, the Scheme will be implemented through State KVIC Directorates, State Khadi and Village Industries Boards (KVIBs) and District Industries Centres (DICs) and banks.

2. Objectives:

- To generate employment opportunities in rural as well as urban areas of the country through setting up of new self-employment ventures/projects/micro enterprises.
- To bring together widely dispersed traditional artisans/ rural and urban unemployed youth and give them self-employment opportunities to the extent possible, at their place.
- To provide continuous and sustainable employment to a large segment of traditional and prospective artisans and rural and urban unemployed youth in the country, so as to help arrest migration of rural youth to urban areas.
- To increase the wage earning capacity of artisans and contribute to increase in the growth rate of rural and urban employment.

3. Quantum and Nature of Financial Assistance Levels of funding under PMEGP

Categories of beneficiaries under PMEGP	Beneficiary's contribution (of project cost)	Rate of Subsidy (of project cost)	
		Urban	Rural
Area (location of project/unit)			
General Category	10%	15%	25%
Special (including SC/ST/OBC/ Minorities/Women, Ex-servicemen, Physically handicapped, NER, Hill and Border areas etc.	05%	25%	35%

Note:

- (i) The maximum cost of the project/unit admissible under manufacturing sector is Rs. 25 lakh.
- (ii) The maximum cost of the project/unit admissible under business/service sector is Rs. 10 lakh.
- (iii) The balance amount of the total project cost will be provided by Banks as term loan

4. Eligibility Conditions of Beneficiaries:

1. Any individual, above 18 years of age.
2. There will be no income ceiling for assistance for setting up projects under PMEGP.
3. For setting up of project costing above Rs.10 lakh in the manufacturing sector and above Rs. 5 lakh in the business /service sector, the beneficiaries should possess at least VIII standard pass educational qualification.
4. Assistance under the Scheme is available only for new projects sanctioned specifically under the PMEGP.
5. Self Help Groups (including those belonging to BPL provided that they have not availed benefits under any other Scheme) are also eligible for assistance under PMEGP.
6. Institutions registered under Societies Registration Act, 1860;
7. Production Co-operative Societies, and
8. Charitable Trusts.
9. Existing Units (under PMRY, REGP or any other scheme of Government of India or State Government) and the units that have already availed Government Subsidy under any other scheme of Government of India or State Government are not eligible.

4.10.1 Achievements during the last three years under the Scheme is as under:-

Sl. No.	Program me year	Target	Cases sanctioned (Nos)	Amount sanctioned (Rs in lakh)	Cases Disbursed by Nodal Bank	M.M. Disbursed by Nodal Bank (Rs. in lacs.)
1.	2008-09	151	162	534.61	122	121.91
2.	2009-10	151	260	244.01	209	178.09
3.	2010-11	278	504	546.62	475	525.10

4.11 Rural Industrial Programme/Rural Artisans Programme

- (a) The main objective of Rural Industries Programme/Rural Artisans Programme is the up gradation of skills of rural artisans by providing them

required training in improved techniques and tools and settling them in their trades, so that they are able to increase their earnings. The following categories of persons are eligible for assistance under this programme:-

- (i) All Rural Artisans and their family members.
 - (ii) All farmers who have less than 5 acres of land and their family members.
 - (iii) All landless labourers who are willing to become artisans.
 - (iv) All Scheduled castes and Scheduled Tribes people.
- (b) Achievements during the last three years

Sl. No.	Financial year	Target (Nos)	Achievement No. of beneficiaries
1.	2008-09	6000	7220
2.	2009-10	6200	7636
3.	2010-11	6200	6904

4.12 Employment Generation Programme

Under Employment Generation Programme, employment is provided to the entrepreneurs under various schemes being implemented by the Department. During the year 2010-11, against the target of 29000 persons, employment was provided to 32273 persons. The data for the last three years is as under:-

Sl No.	Year	Target	Achievement
1.	2008-09	27800	31614
2.	2009-10	29000	33015
3.	2010-11	29000	32273

4.13 Mines and Minerals

4.13.1 Minerals constitute a fundamental component of the State's material and economic base. Himachal Pradesh through its history has been variously called as an "Apple bowl", "A Hydel State", and is now on the threshold of becoming the "Cement State" of India as the quality limestone which is one of the most important ingredients in the manufacture of cement is available in plenty.

4.13.2 Commercially exploitable minerals found in various districts of the State at present are as below:—

Distt. Bilaspur Limestone, dolomitic limestone, shale, brick earth, minor minerals like sand, stone and bajri.

Distt. Kangra Roofing slate, Brick earth and minor minerals like sand, stone and bajri.

Distt. Chamba Limestone, Roofing slate, magnesite and minor minerals like sand, stone and bajri.

Distt. Kinnaur Gypsum and minor minerals like sand, stone and bajri.

Distt. Kullu Roofing slate, quartzite crystal, mineral water, Semi-precious stone and minor minerals like sand, stone and bajri.

Distt. Lahaul & Spiti Antimony-ore, gypsum and minor minerals like sand, stone and bajri

Distt. Solan Lime stone, dolomitic limestone, shale, building stone and minor minerals like sand, stone and bajri

Distt. Una Silica boulders and minor minerals like sand, stone and bajri

Distt. Mandi Limestone, rock salt, roofing slate, quartzite and minor minerals like sand, stone and bajri

Distt. Hamirpur Silica boulders and minor minerals like sand, stone and bajri

Distt. Shimla Limestone, quartzite, slabs slates and minor minerals like sand, stone and bajri

Distt. Sirmour Limestone, dolomitic limestone 49arites, gypsum, shale, quartzite and minor minerals like sand, stone and bajri

4.13.3 Existing Status of Cement Industry

Himachal Pradesh is gifted with natural wealth of vast limestone deposits which are capable of sustaining large numbers of limestone based industries which include cement plants and other industries engaged in the manufacture of

calcium carbonate, poultry grit, lime, limestone powder etc. These industries are generally located near to the limestone deposits. At present there are Five (5) cement plants (M/s Associated Cements Co. Ltd. Gagal, Distt. Bilaspur, M/s Ambuja Cements Ltd. Darlaghat, Distt. Solan and M/s Cement Corporation of India, Rajban, Distt. Sirmour M/S Jai Parkash Associates Company Ltd. in Baga-Bhalag, Tehsil Arki Distt. Solan) in large and medium sector, besides about 6 mini cement plants, 9 hydrated lime and quick lime calcium carbonate units, 88 numbers of limestone powder/poultry feed have been set up.

To exploit the available limestone deposits for setting up of major cement plants, mining leases and prospecting licenses have been granted in favour of the following companies.

- (i) **M/s India Cement Ltd-** The MOU was signed with the company on 11-5-2006 to set up 2 million tonnes capacity cement plant based on Gumma-Rohana limestone deposits in Tehsil Chopal, Distt. Shimla and a mining lease was granted on 3-6-2008 for an area measuring 977-77-34 hecets.
- (ii) **M/s Lafarge India Ltd.-** The MOU was signed with the company on 8-3-2007 to set up 2 million tones capacity cement plant based on Alsindi limestone deposits in Tehsil Karsog, Dstt. Mandi and a mining lease was granted on 7-7-2008 and 6.8.2008 respectively for an area measuring 9886-01-19 bighas.
- (iii) **M/s Ambuja Cements Ltd.-** Prospecting licence over an area of 520 hecets was granted on 29-7-2008 to carry out detailed survey of cement grade limestone deposit near village Gyana, Chalyana, Mangu etc. in Tehsil Arki, Distt Solan to enhance their existing cement production based on these deposits.
- (iv) **M/s Dalmia Cement Ltd** Prospecting license over an area of 25 sqkm was granted on 12-9-2008 to out carry detailed survey of cement grade limestone deposit in Kariyali-Kothi-Sal Bagh limestone deposit in Tehsil Sunni of District Shimla for setting up of a large cement plant.

Major Achievements:

Sr.	Item	2008-09	2009-10	2010-11
1.	Revenue received	Rs.73.70 cr.	Rs. 85 cr.	Rs. 101.12 cr.
2.	No. of mining leases/ Prospecting Licence granted/ renewed			
	a) Under Major Minerals	9 Mining Lease Granted /Renewed	108(Mining Lease) Granted/Rene wed	1 under Major mineral granted/ renewal
	b)Under minor minerals	2 (Prospecting Licence) Granted 95 (Mining Lease) Granted Renewed		121 mining leases granted/ renewal
3.	Drilling work done	611.60 mtrs.	384.40 mtrs.	622.80 mtrs
4.	No. of illegal cases detected	1611 Nos.	2406 Nos.	1709 Nos.
	a) Compounding fee	Rs. 18.60 lac	Rs. 35.92 lac	Rs. 37.85 lac
	b) Fine imposed by Court	Rs. 13.91 lac	Rs. 6.17 lac	Rs. 6.13 lac
	Total	Rs. 32.51 lac	Rs. 42.09 lac	Rs. 43.98. lac

4.13.4 Significant Achievements:

- i) With the sincere efforts of the Department, the Geological Survey of India, has agreed to take up two investigations in the State of Himachal Pradesh in collaboration basis in respect of (a) Large scale mapping of Krol belt to delineate limestone & dolomite horizons in District Sirmour and (b) search for silica sand suitable for glass industry in Rampur quartzite. The investigation will help in proving the qualitative & quantitative deposits of the said minerals which will facilitate to set up mineral based industries. The survey and exploration work is continue and during the year 2010-11, 80 K.M line mapping, traverse mapping done in Rampur area and 76 sq km in Krol formation with 102 geochemical samples collected.

- ii) Department of Panchayati Raj, Government of Himachal Pradesh vide-Notification No. PH II- HA (2) 2/95-20381-630, dated 1st November – 1999, has allowed the Gram Panchayats to levy taxes and fees under the Himachal Pradesh Panchayati Raj Act, 1994, under section. 100 (1)(d) on extraction & export of sand, stone, bajri & slates. As per the notification the taxes on the extraction of sand, stone & bajri not exceeding to Rs- 10/- Per truck & Rs-5/-Per trolley and in case of state the tax not exceeding Rs- 50/- Per Truck. The Panchayat Tax is being collected through the District Mining Officers and is being deposited in the relevant Head of Account. Accordingly, a sum of Rs, 65,59,655/- (Rupees sixty five lacs fifty nine thousand six hundred and fifty five only) on account of Panchayat tax has been realized by the field agencies during this year (w.e.f. 1.4. 2010 to 31.3.2011).
- iii) In order to check menace of illegal mining, the Department has recently taken the initiative to fill up following vacant posts in the Geological wing:
- Mining Officer: The case for filling up of 4 vacant posts of mining officer has been sent by the government of H.P to the H.P. Public Service Commission vide letter no Ind A(B)2-5/2010 dated 6/9/2010.
- Mining Inspector/Assistant Mining Inspector/Technical Assistant: The case for 1 post of Mining Inspector, 3 posts of AMI and 2 posts of Technical Assistant has been sent to the HP Subordinate Services Selection Board, Hamirpur vide this office letter no. Udyog Bhu-stha-kha 6/2010 dated 6/9/2010
- Mining Guard: 36 vacant posts of the Mining guard has been filled up from the surplus pool after taking the approval from the Government.
- iv) Out of total of 509 Nos. of draft copies of Working-cum-Environment Management Plans received in the office so far, for scrutiny and physical verification, 52 Nos. of Working Plans were scrutinized at the Head Office level during the previous year. Further 84 Working Plans have been approved till date and remaining draft Working Plans are either forwarded

to Mining Offices for physical verification and remaining to the concerned Registered Qualified Persons for corrections/amendments.

Court Cases:

- a) Supreme Court Cases: Special Leave Petitions filed by the Department = 7
- b) High Court Cases: Pending cases of previous year = 77
 - Fresh Cases filed = 95
 - Cases Decided = 68
 - Pending Cases = 89

District Court Cases:

Cases filed in the subordinate courts of districts pertaining to illegal mining = 624

Cases decided by the court (including of previous year)= 510 Nos.

Fine imposed by the Court (in Rs) = 6.13 lac

Year	No. of cases pending from previous year	No. of cases filed by different parties	No. of cases decided	No. of cases pending
2008-09	72	22	35	59
2009-10	59	55	37	77
2010-11	77	95	68	89

4.13.5 Geo-technical/Geo-environmental investigations:

(A) Geological Exploration

1. Cement grade limestone of Gumma-Rohana area (Tehsil Chopal) Distt. Shimla.
 - Drilling work for exploration of cement grade limestone was continued on payment basis on the request of M/s India Cements Ltd. in Gumma-Rohana block of Tehsil Chopal, Distt. Shimla.
 - Drilling =482 mtrs.
2. Cement grade limestone of Dhara Badu area(Tehsil Sunder Nagar Distt Mandi HP
 - Drilling work of exploration of cement grade limestone on payment basis on request of M/S ACC Ltd in Dhara Badu
 - Drilling =75.60 mtrs

- Drilling for foundation testing:
- Drilling for Geo Technical investigations were carried out in different parts of the state.
- Drilling =65.20 mtrs.

Total drilling done during the year 2010-2011 (1+2+3) = 622.80 mtrs.

(B) Geotechnical Investigations

During the financial year 2010-2011, following Geo-Technical studies were undertaken as per the request made by different Govt. Departments & District Administration;

Geo-Technical Reports w.e.f.upto 01.04.2010 to 31-3-2011

1. Geotechnical Report on construction of Motorable bridge over Road in Distt. Kinnaur, H.P.
2. Geological Report on C/o Motorable bridge Brua Nallah on Karchham Brua Road in Distt. Kinnaur, H.P.
3. A Geological Stability Report on the site proposed for C/o Neauli Shanshar road in Sub-Division Banjar Distt. Kullu, H.P.
4. A Geological Stability Report on the site proposed for C/o road from Sainj to Manyashi in Sub- Division Banjar Distt. Kullu, HP
5. A Geological Stability Report on the site proposed for C/o Jibhi-Seraj road in Banjar Sub-Division Distt. Kullu, H.P
6. A Geological Stability Report on the site proposed for C/o Fagala to Devgarh-Gohi road to Devgarh-Gohi road in Sub-Division Banjar Distt. Kullu, H.P
7. A Geological Stability Report on the site proposed for C/o Dehuri-Shanac Shrikot road in Sub- Division Banjar Distt. Kullu, H.P
8. Geotechnical Report on the C/o bridge over Galang Nalla on Dobhi-Phojal Pichhlihar Neri-Koth Kukri road in Kullu Distt Kullu, H.P
9. Geological Report, note on the C/o bridge over Pin River near Village Khar in Distt. Lahaul & Spiti: H.P
10. Geotechnical Report in respect of c/o Museum Cum-Library and Tanzin Giacho Bhawan at Key Gompâ Distt. Lahaul & Spiti, H.P.
11. Geological Report on the site proposed for Development of India Institute of Tech.(IIT) Township at Kamand Distt. Mandi. H.P
12. Inspection report on the proposed site for the Swad Small Hydro Project in Distt. Mandi H.P

13. Geological Report on the site proposed for C/o Motorable road to Newly Constructed Bus Stand, Rampur in Shimla Distt, of H.P
14. Geotechnical Report on C/o School building at Urmi on Taklech Bahli Dhar road H.P.P.W.D., Sub-Division Taklech Rampur in Distt. Shimla, H.P.
15. Geotechnical Report on C/o Motorable road of link road to Gunda Raila on Sungri-Taklech road in H.P.P.W.D Taklech, Rampur in Distt. Shimla, H.P
16. Geological Report on the study of strata for abutment of 1-Beam bridge on Narail Kolvi road under HPPWD Sub-Division Matiana Distt. Shimla, H.P
17. Geological Note on the site proposed for C/o Convention Hall-Cum-Hostel at Samiti, Mashobra, Distt. Shmla, H.P.
18. Geological Report in respect of Site Micro Hydel Power Project Bargaon, Distt. Shimla, H.P.
19. Geological report in regard to c/o Motorable link road fcom Bajwa Bridge to Village, Bajwa (RD) 0/00 to 4/00 KM.), H.P.
20. Geotechnical Report in respect of Flood protection work and land sliding at Village Sojla in GP Barthata, Distt. Shimla, H.P
21. Geological report on the site proposed for c/o Zila Parishad Bhawan near Regional Transport Office (RIO), in Shimla Town Distt. Shimla, H.P
22. Geotechnical Report on the site proposed for C/o building of the Excise & Taxation Commissioner, Nahan Distt. Sirmour H.P
23. Geotechnical Report on damaged house due to land subsidence/land slide at Village Chandi in Distt. Solan, HP
24. Geotechnical Report on land subsidence /land slide at Dagrob Pul at RD-2/905-920, on Dharampur-Subathu road in Distt. Solan, H.P
25. Geotechnical Report in respect the area proposed for the construction of Chambers for the Member of High Court Bar.
26. Geotechnical Report on in respect of damaged house at Panthaghati Distt. Shimla, H.P.
27. Geotechnical Report in respect of Water leakage near Shah Niwas at Gorkhan Lodge Kasumpti, Shimla-171009, H.P.
28. A Geological study note on the hill slope failure in between ITBP Ground, Govt. Degree Collage Building and Girls Hostel at Building Reckong Peo, Distt. Kinnaur, H.P.
29. A geological report on the site proposed for C/o road from Surge Shaft

to Banahu in sub Division Banjar, Distt. Kullu H.P

30. A geological report on the site proposed for C/o link road from Pechha to Deogra Village in Distt. Kullu H.P
31. A geological stability report on the site proposed for C/o road from Kanon to Tandi in sub Division Banjar, Distt. Kullu H.P.
32. A geological stability report on the site proposed for C/o Chalain Devgarh-Kaunsha road in sub Division Banjar, Distt. Kullu H.P.
33. A geological stability report on the site proposed for do Sheshamati By Pass road in Kullu Division Distt. Kullu H.P.
34. Geological stability report on the site proposed for Haralgad Karahil road in sub division Banjar Distt. Kullu H.P
35. Geological Stability report on the site proposed for C/o Salwar-Kalyarh road in sub Division Banjar Distt Kullu H.P
36. Geological stability report on the site proposed for c/o Ropa-Suclain Shanghar road in sub Division Banjar Distt. Kullu H.P
37. A geological report on the site proposed for road from Ropa to Suchain in sub Division Banjar, Distt. Kullu H.P
38. A geological stability report on the site proposed for C/o Godigad Kanyal road in sub Division Banjar, Distt. Kullu H.P
39. A geological report on the site proposed for C/o Science Block in Govt Senior Secondary School Jabli Distt. Solan H.P
40. Geotechnical report in respect of sinking of old Kalka- Kasauli road Division Kasauli Distt. Solan H.P
41. Geotechnical report in respect of Bhoj Nagar- Bansar road Division Kasauli Distt. Solan H.P.
42. Geotechnical. report in respect of land settlement in Joharji- Mallah road Division Kasauli Distt. Solan H.P
43. Geotechnical report in respect of damage to the village and orchards in Kachrang Distt. Kinnaur H.P.
44. Inspection report on the site proposed site for the Swad Small Hydro project in Distt. Mandi H.P.

4. 14 Central Govt. Incentives :-

4.14.1 Central Transport Subsidy:-

The new industrial units are eligible for grant of 75% transport subsidy for a period of five years from the date of commencement of commercial production. This scheme, which was earlier operational on disbursement from the State budget and reimbursement from the Government of India basis. From the year 2004-05 this system has been changed and now the Central Government is providing funds to as a Nodal Agency i.e HPSIDC Ltd. for disbursement on behalf of GOI to the Industrial Units. The financial achievements under the Scheme for the last six years are as under:-

SI No	year	Amount released by the GOI to Nodal Agency (HPSIDC) (Rs. In crore)	Amount spent (Rs. In crore)
1.	2004-05	6.00	0.00
2.	2005-06	4.50	10.01
3.	2006-07	6.50	6.98
4.	2007-08	14.20	14.21
5.	2008-09	0.00	0.00
6.	2009-10	15.74	0.00
7.	2010-11	-	-
	Total	46.94	31.20

4.14.2 Central Capital Investment Subsidy:-

The Central Capital Investment Subsidy for the industrial units coming up in the State is admissible @ 15% under the Special Package of Incentives notified for our State. Under this Scheme, Rs 112.91 crores has been provided by the Govt. of India, Department of Industrial Policy & Promotion(DIP&P) for disbursement to units as per norms of the Scheme.

The State Level Committee on Central Subsidy has approved 1200 cases worth Rs. 189.65 crore Capital Investment Subsidy to the Industrial Units during the last seven years and an amount of Rs 112.91 crore has been disbursed. The financial achievements under the Scheme for the last seven years are as under:—

SI No	year	Amount released by the GOI (Rs. In lakh)	Amount approved (Rs. In lakh)	Amount disbursed. (Rs. In lakh)
1.	Upto 2004-05	250.00	219.40	171.90
2.	2005-06	700.00	1595.46	778.10
3.	2006-07	1200.00	2043.02	600.00
4.	2007-08	2000.00	2063.54	2455.54
5.	2008-09	2257.00	2855.82	2144.46
6.	2009-10	1900.00	3933.70	2157.00
7.	2010-11	2984.00	6254.18	2984.00
	Total	11291.00	18965.12	11291

4.15 Collection of Statistics of Micro & Small Enterprises (MSE) Units:-

A Central Plan Scheme “Collection of Statistics of MSEs” is being implemented in the State. Under the Scheme, a Nucleus Cell has been created at the Directorate Level. The main objective of the Cell is to update data on MSE sector, maintain the frame list of MSE units functioning in the State, conduct surveys etc. The detail of funds provided by the Govt. of India for the Nucleus Cell during the last three years are as under:—

SI No	year	Funds received from Govt. of India. (Rs in lakh)
1.	2008-09	18.35
2.	2009-10	20.25
3.	2010-11	15.00

CHAPTER – 5

OBJECTIVES AND ACTIVITIES OF CORPORATIONS/BOARDS

In order to give a boost to Industrialization in the State, the State Government has established a number of Corporations/Board. The details of these Corporations/Board are given in the following paragraphs.

5.2 THE HIMACHAL PRADESH STATE INDUSTRIAL DEVELOPMENT CORPORATION LTD. (HPSIDC)

The Himachal Pradesh State Industrial Development Corporation Limited (HPSIDC) was incorporated in November, 1966 as a Company wholly owned by the State Government. The Corporation is, inter-alia, engaged in carrying out activities towards the advancement of industrial development of the State and also acting as the State level financial institution for providing term loans to small & medium industrial units in the State.

The main developmental activities of the Corporation are as under:—

Term loan assistance to the industrial units being set up in the State.

Development of industrial infrastructure.

Execution of civil works as deposit works of various State Departments.

5.2.2 In furtherance to its primary role of promotion and development of medium and large scale industrial units, the Corporation provides long term finance upto Rs.500 lakh per project, besides equity participation in selective cases, to industrial units in the medium and large scale sectors. The loan assistance could be over and above the assistance being provided by other State Government Corporations. The Corporation has provided financial assistance to about 227 projects to set up industrial units in the State since inception. Total term loan component of Rs.159.37 crore as on 31.03.2011 has been sanctioned and Rs.156.05 crore has been disbursed by the Corporation to such assisted companies. The Corporation has assisted 49 companies by way of equity contribution and Rs.8.76 crore has been sanctioned & disbursed to these companies as equity.

5.2.3 The Corporation has been declared as Nodal agency for routing the disbursement of Central Capital Investment subsidy (CCIS) and Central Transport Subsidy (CTS) by the Govt. of India. The disbursement of these subsidies are made by the Corporation to the eligible industrial units on the recommendations of Director of Industries, Govt. of H.P., and as per the funds placed by the G.O.I. with the Corporation, from time to time. The disbursement made during the year 2010-11 are as under:—

Name of the scheme	Amount disbursed (Rs. in lakh)
CCIS	2984.00
CTS	4607.00

5.2.4. During the financial year 2010-11, the Corporation published its schemes alongwith the policies/incentives of the Government of Himachal Pradesh, in order to attract investment to the State.

5.2.5. The Corporation has executed works for the development of the Industrial Infrastructural amounting to Rs.1376.00 lakh (approx.) during the year 2010-11 of various Departments, Public Undertaking and Project under Centrally Sponsored Scheme ASIDE & Industrial Growth Center Scheme. At present, the execution of the following works valuing Rs.3937.00 lakh is in progress:—

(Rs. In lakh)

S.No	Department/ Corporation	Works/Location	Estimated cost of sanctioned projects
1.	Industries Department	ASIDE Baddi/ Ind. Areas/Water supply Scheme	1767.00
2.	H.P. Bus Stand and Management Authority	Sunder Nagar	38.00
3.	H.P. Fisheries Deptt.	Residential Quarters Alsu, Mandi & Dadasiba	31.00
4.	Technical Education	ITI's & Building Solan Rampur Bushahr, Bogdhar, Shamshi,	748.00

		Shahpur, Nahan & Bilaspur	
5.	H.P. Prison Deptt.	Barracks in. Nahan, Kanda & Dharamsala	92.00
6.	Other Deptts.	Civil Supplies, Excise & Taxation and Forensic, Labour & Welfare and Police	680.00
7.	Panchyati Raj Deptt.	Admin. Block & Hostel, Shimla	581.00
		TOTAL	3937.00

5.2.6. After the announcement of new industrial incentive package during January, 2003 by the Govt. of India the industrial investment climate in the state has under went a change for the better. The Investment scenario in the State saw spurt and large number of projects have been set up in various areas of the State. Some of the leading industrial houses of the country also came forward to set up units in the State. The Corporation under its development and financing portfolio is providing due assistant to prospective entrepreneurs. At present the term loan lending rate is 12.00% p.a. with provision of rebate of 0.5% p.a. for timely payment by the borrower on due date, and for project satisfying high safety parameters, the rebate provision is 1% p.a. In order to improve the term loan recovery and revive sick/potentially sick units, the Corporation has taken the following steps which has yielded satisfactory results:—

- (a) Proposals from the promoter/directors are invited for the rehabilitation of the units and steps are taken to revive those units which are found technically and economically viable by giving various relief's and concessions.
- (b) In case the unit is found non-viable, the promoters are advised to submit One Time Settlement (OTS) proposals to settle the dues of the Corporation. A good number of units have been able to settle their accounts through OTS route.
- (c) In case the Promoters are not in a position to pay the dues of the Corporation, the assets of the Company are taken over u/s 29 of SFC's

Act and the taken over assets disposed off to recover the dues. Recovery suits are also filed against the Promoter-Directors by evoking personal guarantees.

- (d) In cases where units are running but the assets cannot be taken over for one or another reason, recovery suits under section 30 of SFC's Act are initiated.
- (e) In case of closed/sick units, change of management proposals are also considered to revive such units by handing over the management to other financially sound Promoters.

5.2.7. As per guidelines of the Advisory Committee and decision of the Board of Directors, stress has been laid for one time settlement of buying back of equity also with good results.

5.2.8. The targets and achievements of the Corporation in the field of loan assistance and infrastructure development during the year 2010-11 are as under:-

(Rs. in lakh)

S.No.	Particulars	Target 2010-11	Achievements 2010-11
1.	Term loan sanctioned	800	260
2.	Term loan disbursed	600	252
3.	Recovery of Principal & Interest	700	852
4.	Execution of Civil Works	1400	1376

5.2.9 The Corporation has developed new Industrial Area at Davni, Distt. Solan and acquired private land measuring 426.12 bighas and case for transfer of another 175 bighas of Govt. land is in progress. The Project on acquired land has been completed at an investment of Rs. 48 Crore during 2007-2011. The Corporation raised a loan of Rs. 20 crore from HPIDB to part

finance the project in the year 2007-08 and entire loan has been repaid. The sale of plots had commenced from January, 2008 & the Corporation has received Rs. 2500 lakh up to 31.3.2011. The Corporation is also developing Nalagarh city centre with outlay of Rs. 211 lakh and have made and investment of Rs. 67 lakh but further investment in this area has been put on hold due to inadequate market response.

5.2.10. The Corporation is earning profits for the last more than three years and has earned profit of Rs. 80.00 lakh during the year 2010-11 (subject to Audit) .

5.3 HIMACHAL PRADESH FINANCIAL CORPORATION (HPFC)

5.3.1 The H.P. Financial Corporation was established under the State Financial Corporation's Act, 1951 on 1st April, 1967 as a result of re-organisation of the erstwhile Punjab Financial Corporation. Prior to this the financial needs of the entrepreneurs of Himachal Pradesh were being looked after by the erstwhile Punjab Financial Corporation. At the time of re-organisation, only three units with outstanding loans of Rs. 0.12 crore were transferred to Himachal Pradesh Financial Corporation.

The Corporation is providing medium and long term loans for setting up small and medium scale industries in Himachal Pradesh. Financial assistance is also provided for expansion, modernization and rehabilitation of the existing industrial units as also to small transport operators.

The Himachal Pradesh Financial Corporation as a Regional Industrial Development Bank has completed 44 years of operation on 31.03.2011. During these years, it has made substantial progress in the areas of sanctions, disbursement and recoveries. During the period from 1.4.1967 to 31.3.2011 the Corporation has sanctioned total loan of Rs. 729 crore out of which Rs 541 crore has been disbursed during this period. Hotels, chemicals, Textiles, Food manufacturing, rubber/rubber products, metal products and transport operators are the major sectors in which assistance has been provided by the Corporation.

Achievements for the last three years period are as under:- Achievements of the Corporation for the last three years are given below:

(Rs. in crore)

Sanction	Particulars	2008-09	2009-10	2010-11 (Unaudited)
1.	Term loan	30.38	30.22	0.16
2	Soft loan	0.00	0.00	0.00
Total		30.38	30.22	0.16

Disbursement	Particulars	2008-09	2009-10	2010-11 (Unaudited)
	Term loan	17.53	20.25	5.94
	Soft loan	0.11	0.00	0.00
Total		17.64	20.25	5.94

	Particulars	2008-09	2009-10	2010-11 (Unaudited)
Refinance	Availed	0.00	18.00	4.73
	Paid	10.78	13.81	15.71
Soft Loan under NEF	Availed	0.00	0.00	0.00
	Paid	0.96	0.08	0.00

<u>Bonds</u>	Raised	0.00	3.00	16.00
	Repaid	10.25	4.48	16.05

<u>Recovery</u>				
	Principal	23.07	24.77	25.00
	Interest	14.76	14.00	10.00
	Total	37.83	38.77	35.00

5.4 HIMACHAL PRADESH STATE HANDICRAFTS & HANDLOOM CORPORATION LIMITED

5.4.1 Brief History of the Corporation :

Handloom & Handicrafts Industries in India have a glorious tradition of excellent craftsmanship. From the employment potential point of view, it has been playing a very important role providing the second biggest single employment avenue next to agriculture. Accordingly, the Himachal Pradesh Government formed a Corporation under the name and style "H.P. State Handicrafts & Handloom Corporation Limited" for the development of weavers and artisans etc. remaining outside the gamut of cooperative fold in 1974. The main objectives of the Corporation are as under:-

To promote the growth and development of Handlooms & Handicrafts Industry in the State of Himachal Pradesh.

To free weavers/artisans from exploitation by the master weavers/artisans/traders.

To impart training to the weavers/artisans in order to improve their skill in weaving etc. and taking other measures for promoting the welfare of the weavers/artisans like financial and raw materials assistance.

To undertake the marketing of handloom cloth and handicrafts. items of the State.

5.4.2 ACTIVITIES OF THE CORPORATION

In pursuance of the above objectives, the Corporation is involved in a number of activities:—

5.4.3 Revival of Extinct Crafts:

In certain pockets of the State, it is feared that crafts like Thangka paintings, Wood carvings & turnings, Kinnauri shawls weaving etc. have either gone extinct or are on the decay. Besides their employment potential these depict the aesthetic genius and technical competence of the craftsmen of the Pradesh. The Corporation is making sincere efforts to revive some of

these skills by employing competent craftsmen under the ancient Indian system of "Guru" and "Chela".

5.4.4 Skill Generation

The Corporation is also generating additional skill for various crafts by running a number of training centers in which training is imparted in shawl weaving, carpet weaving, durries and blankets weaving, thanka paintings, hand-knitting, etc. under specific schemes of the Govt. of India and the Govt. of Himachal Pradesh.

Pre-loom and Post loom facilities to weavers and other artisans:

In order to provide (a) Pre-Loom i.e. Design, raw-materials; (b) Loom i.e. Modernized Loom, improved accessories, technical guidance; (C) Post-Loom i.e. to buy back the finished products after paying conversion charges and then to undertake its marketing, the Corporation is running Procurement and Sub Procurement Units in various districts of the State. These procurement and Sub procurement Units also provides necessary guidance and help to artisans and weavers.

5.4.5 Production in Work-shops:-

The artisans and weavers can also undertake production of various items on piece rate wage basis at the different work sheds of the Corporation located in various Districts. These workshops cater to shawl weaving, furniture making, wood turning, carpet weaving, dolls making, Hand Kintted items and leather crafts of the Pradesh.

5.4.6 Marketing

The viability of handloom and handicraft sector is largely dependent on an efficient marketing system. It has been experienced that the sector has to face several bottlenecks in the field of marketing. Over the years there have not been many significant innovation in marketing of handloom and handicrafts in India. Traditional patterns continue in different facets of production, marketing, distribution, promotion, advertising etc. It is only recently that manufacturers of these items are becoming market oriented.

Marketing is a basic problem of the Centralized Industrial Sector. Although products of this de-centralized Industry may have advantage in quality and designs etc., it is usually difficult for such products to compete with lower priced similar products of large industries in well-established markets. Effective marketing is therefore a pre-requisite for the success of the de-centralized industrial development.

All the three major markets available for the marketing of these products viz. State Market, National Market and Market surrounding the areas of Production are being explored vigorously by the Corporation.

The Corporation is undertaking marketing through its various retail out-lets throughout the state and even in country outside the State. These Outlets have been named 'HIMACHAL EMPORIUM'. Presently, the Corporation has 17 sales outlets, out of which, one each is in New Delhi and Bangalore. The rest are located in all-important cities of Himachal Pradesh. The other channels of sales are Exhibitions and National handloom Expos, Sales through established Showrooms, Barter sales, consignment sales and Govt. and Institutional supplies.

In order to increase the income/ earnings of the Corporation spare/ surplus space in different emporia of the Corporation have been identified and maximum counters were allotted to different interested consignment parties on Minimum Sales Guarantee basis which will give assured income to the Corporation. The comparative data for the last two years are as under :-

Sr.No.	Year	No. of counters allotted	Total MSG (Rs. Lacs)	Commission earned (Rs. In lacs)
1.	2008-09	12	211.05	47.96
2.	2009-10	24	347.98	77.64
3.	2010-11	26	448.80	100.26

Thus the assured income/sales of the Corporation have increased considerably.

Two projects envisaging financial outlay of Rs. 20.00 lacs were got sanctioned from the o/o the Development Commissioner (Handicraft) GOI. Each project is for Rs. 10 lacs. Details of the projects are as under :-

Integrated Design Development Project in designed shawls (Chamba)-Rs. 10 lacs.

Integrated Design Development Project in leather-craft (Chamba Chappal) –Rs.10 lacs)

Handloom Cluster, Kullu

The Corporation is running Handloom Cluster at Kullu. The project was sanctioned during the year 2005-06 with total financial outlay of Rs. 2 crore. Total 5000 weavers in this project have been benefited. This is the 5th year of project. The funds to the tune of Rs. 43.45 lacs have been sanctioned against the action plan 2009-10. The action plan for the year 2010-11 to the tune of Rs. 48.15 lac have been approved by the Government of India.

Handloom Cluster, Gohar (Mandi)

The Corporation is also implementing Handloom Cluster at Gohar, District Mandi to benefit 350 weavers with the financial outlay of Rs. 44.20 lacs as per details given below:-

1. Central Share	Rs. 40.57 lacs
2. State Share	<u>Rs. 3.63 lacs</u>
TOTAL	Rs. 44.20 lacs

The funds for the current year amounting to Rs. 16.03 has been utilized.

Handloom Cluster, Reckong Peo (Kinnaur)

The Corporation is implementing Handloom Cluster at Reckong Peo, District Kinnaur to benefit 350 weavers with the financial outlay of Rs. 55.15 lacs. The complete detail is as under :-

1. Central Share	Rs.50.70 lacs
2. State Share	Rs. 4.05 lacs
3 Beneficiary Share	<u>Rs. 0.40 lac</u>
TOTAL	Rs. 55.15 lacs

The Corporation has received a sum of Rs. 20 lac for the implementation of the above project during 2009-10 and the funds are being utilized.

New Clusters proposed to the o/o DC(Handlooms) Govt. of India:

The Corporation had submitted following new project proposals for sanction to the o/o DC(Handlooms), Government of India, Ministry of Textiles, New Delhi:

Sr.No.	Particulars	Total outlay
1.	Tissa Chamba	Rs.59.45 Lacs
2.	Janhehli Mandi	Rs.59.45 Lacs
3.	Jawali kangra	Rs.59.45 Lacs

The above proposed projects have been sanctioned by the Government of India as per detailed given below:-

Sr.No.	Particulars	Total outlay
1.	Tissa Chamba	Rs.41.45 Lacs
2.	Janhehli Mandi	Rs.52.45 Lacs
3.	Jawali kangra	Rs.41.45 Lacs

During the year 2010-11, fifteen District Level Events were got sanctioned from the o/o Development Commissioner(Handlooms), Govt. of India. for organizing each even, GIA to the tune of Rs.2.00 lac by the Govt. of India.

The Development Commissioner, (Handicraft) Govt. of India, Ministry of Textile has also sanctioned eight training batches programmers in skill up - gradation in Metalcraft, Leather craft, Chamba Rupal with the financial outlay of Rs. 14.48 lacs.

The Development Commissioner(Handicrafts) , Govt. of India, Ministry of Textile has also sanctioned four Design and Technical Workshops in respect of Chamba District with the financial outlay of Rs.7.20 lacs .

5.4.7 Targets and Achievements during the year 2010-11 are as under:

Sr. No.	Particulars	Targets	Achievements
1.	Production (Rs.in lakh)	57.00 lac	44.66 lac (T)
2.	Sales (Rs.in lakh)	1175.00 lac	1366.46 lac (T)
3.	No. of Persons trained during the year 2010-11.	-	445 No.
4.	No. of Persons under going training as on 31.03.2011	-	736 No.

5.	No. of Training centers. as on 31.3.2011.	-	64 No.
6.	No. of Sales outlets as on 31.3.2011	-	17 No.
7.	No. of Production centers as on 31.3.2011.	-	14 No.

5.5 THE HIMACHAL PRADESH STATE SMALL INDUSTRIES & EXPORT CORPORATION LIMITED (HPSSIEC)

5.5.1 BACKGROUND

The Himachal Pradesh State Small Industries and Export Corporation Limited was incorporated in 1966 under the Companies Act, 1956. It is the first public sector undertaking incorporated by the Himachal Pradesh Government to achieve the following main objectives:—

1. To aid, counsel, assist, finance, protect and promote the interest of small industries in the State;
2. To provide the SSI units with with capital, credit, resources, technical and managerial assistance for undertaking production and marketing including exports .
3. To procure and distribute raw materials allotted by the Government of India to the SSI units

INFRASTRUCTURE

The Corporation has its registered office in Shimla . It has branches at Parwanoo , Chandigrah, Mehatpur, and Kndrori. The branch at Parwanoo and Mehatpur are handling bitumen and iron & steel business while the branches at Chandigrah and Kndroori are handling iron and steel business.

2. FINANCIAL POSITION

The authorised share capital of the Corporation is Rs. 300.00 lakh against which the paid –up capital is Rs. 246.08 lakh, totally subscribed by the State Government. The profit for the last five years are asunder:-

Year	Profit (Rs. In Lakh)
2006-07	8.02
2007-08	1.34
2008-09	4.41

2009-10	2.37
2010-11	10.07 Tentative/Unaudited

5.5.2 Present Activities :-

(i) Iron and Steel :- The Corporation is procuring Iron and Steel from prime producers like Steel Authority of India, Rashtriya Ispat Nigam Limited etc. under “ State Allocation” from the Ministry of Steel, Government of India .

(ii) Bitumen :- The Corporation is working as carrying and Forwarding Agent of India Oil Corporation with stock point at Parwanoo and Mehatpur.

(iii) Industrial sheds :- The Corporation has constructed 8 industrial sheds at Parwanoo and 17 industrial sheds at Paonta Sahib. These industrial sheds have been leased out to the SSI units.

5.5.3 Targets and achievements during the year 2010-2011

(Rs. In lakhs)

Sl. No.	Name of material	Targets	Achievement
1.	Iron & Steel	27.23	25.55
2.	Service Charges for Handling Bitumen	105.00	76.26
3.	Rent from Industrial Sheds .	25.00	23.04
4.	Total Income	191.23	239.52
5.	Total expenditure		229.45
6.	Net Profit		10.07 (Tentative/ Unaudited)

(Sanctioned by GOI, Ministry of Corporate Affairs, for Amalgamation of HPSSIEC with HPSIDC has been received on 26th March, 2011.)

5.6 HIMACHAL PRADESH GENERAL INDUSTRIES CORPORATION LIMITED. (HPGIC)

Himachal Pradesh General Industries Corporation Ltd. (HPGIC) came into being in the year 1988 on restructuring of HPSIDC when its industrial units were transferred to Himalaya Fertilizers Ltd., (Subsidiary of HPSIDC Ltd). In September 1988, the Subsidiary status was done away with and HFL was renamed as HPGIC and made an Independent undertaking of the H.P. State Government. At the time of formation of Corporation in 1988, the total strength of employees was 456 which has now reduced to 157 employees working with Corporation and 60 nos. more employees deployed with Govt. Deptt. on secondment basis.

5.6.2 (a) SHARE CAPITAL: The authorised share capital of the Corporation is Rs. 900.00 lakh. The paid up capital as on 31st March, 2011 stood at Rs. 716.27 lakh.

5.6.3. (b) ACCOUNTS: There are no arrears on this account. The Balance Sheet for the year 2009-2010 has since laid down on the table of the Himachal Pradesh Vidhan Sabha on 16.03.2011.

5.6.4 (c) CONTRIBUTION TO STATE EXCHEQUER:- The Corporation contributes around Rs. 500.00 lakh annually by way of Excise Duty, Sales Tax, Royalty etc. to State Exchequer.

5.6.5 (d) ACTIVITIES :- The Corporation is at present engaged only in manufacturing activity in its various units. The performance of the Corporation during the year is as under :—

Year	Sale (Rs. in lakh)		Profit/ Loss (Rs. in lakh)	
	Estimated	Actual	Estimated	Actual
2010-11	2770.27	2740.79	(+) 74.94	(-) 22.66

5.6.6. The Corporation is running following units, which are engaged in the manufacturing of Country Liquor, Mining operation, Wooden and Steel furniture and silk fabric and trading of items required in Health institutions of the State Govt.. The actual figures for the year 2010-11 are tentative and subject to Audit.

1) COUNTRY LIQUOR BOTTLING PLANT, MEHATPUR/PARWANOO

This unit is engaged in the manufacture of country liquor for sale in the State of Himachal Pradesh. The unit depends heavily on the share of permits issued in favour of HPGIC Ltd. by the State Excise Department along with other private Bottling plants in the State. The number of bottling plants in the State have gone up to eleven. Even though the quality of liquor manufactured by this unit is good but it is facing stiff competition from the other bottling plants of the State. The Corporation has also taken HIMFED Bottling Plant at Parwanoo w.e.f. May, 2006 on lease basis for bottling of UNA No.1. Keeping in view the market scenario combined target of 32.00 lakh proof litres was fixed. However in existence of stiff competition in the market, the unit has been able to sell 32.90 lakh proof liters by 31st March, 2011 against the same.

The production, sales and profit(+)/Loss (-) position during the year 2010-11 is as under:—

Year	Production (lakh PLS)		Sale (Rs. in lakh)		Profit/ Loss(Rs. in lakh)	
	Estimated	Actual	Estimated	Actual	Estimated	Actual
2010-11	32.00	32.13	2051.14	2122.47	(+)156.16	(+)192.53

2) MINING PROJECT, BILASPUR:

a) Lime Stone: The activity of mining of lime stone and its supply to National Fertilizers Ltd., Naya Nangal has been closed since January, 2000 due to cessation of demand from them.

b) Shale : The Shale Mining site is located at Delag (Distt. Bilaspur). During the year 2010-11 the unit supplied 69,850 MTs against the target of 90,000 MTs to M/s ACC Barmana from our mine and taking the shale from other supplier of private sector.

The Production, Sales and Profit (+)/ loss(-) position during the year 2010-11 is as under:—

Year	PRODUCTION (in PLs)		SALES (Rs. in lakh)		PROFIT (Rs. in lakh)	
	Estimated	Actual	Estimated	Actual	Estimated	Actual
2010-11	90000	68,850.00	47.13	37.19	(-)7.38	(-)18.17

The State Government has decided to close down this unit and its workers will be got adjusted in other Govt. Departments.

3) **NURPUR SILK MILLS, NURPUR:**

This was a composite unit for the reeling of silk yarn from cocoon and production of silk fabric. However, the activity of reeling of silk yarn was closed in March, 2000 as it had become non-viable. Out of 51 workers employed in this section, 19 have opted for VRS and 4 others retired on superannuation. The remaining 28 surplus workers have been got adjusted in Government Departments on secondment basis. As per decision of the State Govt., the above reeling section alongwith four staff members, plant & machinery, and other misc. assets has been transferred to the Industries Department.

As regards production of silk fabric, this unit has been producing silk chiffon and crape. The unit is facing stiff competition from Chinese/ Chiffon/Crepe, which is available at much lower rates in the market. In the recent past, efforts also have been made to introduce new varieties of silk fabric with a view to produce value added products.

The production, sales and profit (+) /loss(-) during the year 2010-11 is as under:-

Year	Production (In meters)		Sales (Rs. in lakh)		Profit(Rs. in lakh)	
	Estimated	Actual	Estimated	Actual	Estimated	Actual
2010-11	10000	5877.50	42.00	33.26	(-) 4.48	(-)26.12

4) FURNITURE FACTORY, BILASPUR /SALES SHOP, SHIMLA AND FURNITURE FACTORY CHAMBAGHAT, SOLAN:

The Furniture Factory, Bilaspur was initially established as a Training-cum-HPSIDC in the year 1971 and to this Corporation w.e.f 1.4.1988. Ever since the transfer of this unit to this corporation, it is being run on commercial lines. It mainly caters to the demand of furniture and related items from Government Departments and has established a name for itself by producing quality products. Two shops and one work shop have been purchased at SDA Complex, Kasumpti to cater to the requirement of the Government Departments located in and around Shimla and also have its State wide presence in other department of State Government all these units are doing well from 2008-09. The Corporation also started manufacturing/ trading activity of furniture & furnishing items at Furniture Factory, Chambaghat, Solan.

The sales and profit (+) /loss(-) figures for the year 2010-11 is as under:—

Year	Production (Rs.in lakh)		Profit(+)/Loss(-)(Rs.in lakh)	
	Estimated	Actual	Estimated	Actual
2010-2011	630.00	548.00	(+)50.51	(+)26.29

Employment: The total number of employees in the Corporation are 157. The Corporation has given regular pay scale at par with the State Govt. to about 119 nos. of employees excluding 60 nos. of employees employed

with the other Govt. Department and 38 nos of employees have been engaged on contract/ daily wage/piece rate basis in its different units.

Statutory Compliance: The Corporation has been regularly depositing, Excise duty, Sales tax, Income tax, Service tax, Goods tax, Provident fund and other statutory payments with various designated Authorities. All such payments upto 31.3.2011 have already been made/deposited.

5.7 HIMACHAL PRADESH KHADI & VILLAGE INDUSTRIES BOARD (HPKVIB) :

5.7.1 With the promulgation of Act No. LXI of 1956 the Khadi and Village Industries Commission came in to existence in April, 1956. The commission and the Govt. of India persuaded the State Govt. to set up Khadi and Village Industries Boards, in order to receive grants and loans from the Commission. The H.P. Khadi and Village Industries Board was created/constituted on 8th January, 1968 under H.P Khadi and Village Industries Board Act, 1966.

5.7.2 Presently the Khadi and Village Industries Board has an important role to play in the economic development of Villages providing employment opportunities at the low capital cost in the hilly rural areas of the Pradesh. These Industries help the artisans to preserve their culture heritage besides earning living hood by getting opportunities at their doorsteps and also help in utilizing the unemployed youths for the processing of locally available raw material by adoption of simple and approved techniques.

The aims and objectives of the Board are as under:—

1. To promote, encourage and assist in the development of Khadi and Village Industries to carry on trade or business in the products of such industries.
2. To provide employment to persons who have been professionally engaged in Khadi and Village Industries.

3. To finance the individual units, Co-operative Societies and Registered Associations at the rate and norms fixed by Khadi and Village Industries Commission for setting up Village Industries.

5.7.3 The function of the Board can be divided into the following broad Areas:-

1. Development,
2. Trading

DEVELOPMENT :

(a)Financing

(b)Promotion & Publicity

Financing :

The Prime Minister Employment Generation Programme(PMEGP) flagship programme of Ministry of Micro, Small & Medium Enterprises(MSME),Govt. of India is aimed at for generation of employment opportunities through establishment of micro enterprises. It is being implemented by the Khadi & Village Industries Commission (KVIC)-Mumbai as a Nodal Agency at the National Level, which is a statutory organization under the administrative control of Ministry of MSME, Govt. of India. However, at the filed level in the States it is being implemented by the State offices of KVIC and State KVIB's in rural areas and DIC's in the rural as well as urban areas of the State. Therefore, Board is presently implementing the PMEGP in the rural areas of the State.

The main objective of the scheme are :-

1. To generate employment opportunities in Rural as well as Urban areas of the Country through setting of new self- employment ventures/micro enterprises/projects.
2. To bring together widely dispersed traditional artisans/ rural and urban unemployed youth and give them self-employment opportunities to the extent possible, at their place.
3. To provide continuous and sustainable employment to a large segment of traditional and prospective artisans and rural

unemployed youth in the country, so as to help arrest migration of rural youth to urban areas.

4. To increase the wage earning capacity of artisans and contribute to increase in the youth rate of rural & urban employment.

Under the scheme the project proposals of the selected beneficiaries are forwarded to Banks for sanction. The bank after taking its own credit decision will sanction 90% of the project in case of General category of beneficiary/institution and 95% of the Project cost in case of Special category (SC/ST/OBC/Min./Women/PHC/Ex.Ser-Man) and disburse full sanctioned amount suitable for setting up of the Project. Rest, i.e. 10% in case of the General Category & 5% in case of special category is the share of beneficiary/ institution, as the case may be, initially to be deposited with the Bank as own contribution, which subsequently is to be released & invested in the project. The Board is to provide/release the Margin Money (Subsidy) to the beneficiary at the rate prescribed under Scheme.

The Board provides/releases the Margin Money (Middle Ended subsidy) @ 25% of the sanctioned project cost (i.e. 90% bank loan & 10% own contribution) in case of Gen. category beneficiary/ institution and @ 35% of the sanctioned project cost (i.e. 95% bank loan & 5% own contribution) in case of Special category (i.e. SC/ST /OBC / Min./ Women/PHC/Ex-serman etc) beneficiary/ institution out of the funds received from the KVIC. The amount of margin money is released through our designated Nodal Branch where Board has places lumpsum amount for further releases to the financing bank branch of the bank. The amount of Margin Money released by the Board through Nodal Branch to the financing bank in favour of the beneficiary/ institution is to be kept in the shape of TDR for 3 (three) years in the name of beneficiary which is credited in their loan account after three years on account of proper utilization of funds failing which Margin Money amount is recoverable alongwith interest. No interest will be paid on the TDR amount and no interest will be charged on the loan to the corresponding amount of TDR (Margin Money) .

**FINANCIAL AND PHYSICAL TARGETS FOR THE YEAR 2010-11
UNDER PMEGP SCHEME ALLOCATED TO THE BOARD.**

TARGETS:

Year	No. of projects	Project Cost (Rs. in lakhs)	Margin Money (Rs. in lakhs)	Employment to be provided (In Nos.)
2010-11	208	970.70	291.53	2080 Persons

Note:— Khadi & Village Industries Commission has released additional margin Money of Rs. 50.00 Lakhs to the Board during the month of March, 2011.

ACHIEVEMENTS:

Year	No. of projects sponsored to Banks	Project cost (Rs. in lakh)	No. of projects sanctioned by Banks	Project cost (Rs. In lakh)	Margin Money released by the Board(Rs. in lakh)	Employment Persons
2010-11	300	1592.89	205	1099.73	342.47	1300 Persons

MARGIN MONEY RELEASED:

No. of cases	Project Cost	Margin Money Rs. In lakh	Employment (Persons)
212	1539.15	341.43	1318

Promotion & Publicity:-Backward & Forward Linkages :

During the year 2010-11 the KVIC has allocated Rs. 4.60 lakh & released funds for the following purpose to the Board. The targets & achievements there of is as under:

Sr. No.	Particulars	Target		Achievements	
		Nos.	Amount (In lac)	Nos.	Amount (In lac)
1.	Distt, Level REGP/ PMEGP Exhibition	3	3.00	3	3.00
2.	Distt. Level Awareness Camps	8	1.60	8	1.60
	Total	11	4.60	11	4.60

Distt. Level REGP/PMEGP Exhibition :- The Board has organized 3 No. District Level REGP/PMEGP Exhibition in Distt. Shimla (Rampur), Solan Kangra (Palampur) during the year 2010-11 in which 38 rural artisan/ entrepreneurs displayed their products. Besides this Board has also participated in the IITF-2010 at New Delhi where the products of rural artisans/ entrepreneurs were put on display as well as sale. The Board has also conducted 8 Nos. District Level Awareness Camps two each in District Mandi, Kinnaur & Kullu and one each in District Solan & Sirmour (Nahan) under Prime Minister Employment Generation Programme Scheme,

5.7.6. TRADING :

H.P. Khadi and Village Industries Board has under taken following departmental trading activities during the year under report:-

SERVICE UNITS: Wool Carding and Oil extraction services and facilities for finishing of woollen goods have been provided to the people in Tribal & Non Tribal areas through 14 Wool Carding and Oil extraction centres and Finishing Plants on nominal rates at the following places:-

1. Distt. Chamba
1. Holi 2, Killar
2. Distt. Lahaul & Spiti
1. Keylong 2. Udaipur 3. Kaza.

3. Distt. Kinnaur 1. Pooh 2, Sangla 3. Skibba (Wool carding & Oil extraction) 4 Reckong Peo (Wool carding, Mini Finishing Plant & Oil extraction) 5. Cholling (Wool carding & Oil extraction) 6. Bhabhanagar 7. Katgaon.

4. Distt. Shimla 1. Jeori

5. Distt. Mandi 1. Balichowki

The target/achievements of these service units for the year 2010-11 is as under:—

Year	Target Physical (beneficiaries)	Achievements (beneficiaries)
2010-11	7000	5260

A total of 37381 kgs of wool was carded and extraction of 9186 kgs of dry seeds (oily) & 172 pieces of woollen cloth measuring 3285 mts have been finished and an amount of Rs. 6,80,889/- was earned as charges in these centers during the year.

Sale shops:—The Board conducted sale of Khadi & Village Industries goods through Sale Shops as following places:—

1. Kangra 2. Kullu 3. Kaza 4. Mandi 5. Manali 6. Recong-Peo, 7. Shimla.8. Hamirpur

The consumers are also being provided with the facilities of K&VI products/articles at reasonable rates. A special rebate up to 108 days was allowed to the customers as provided by the Khadi & Village Industries Commission/State Govt. The targets/ achievements are as under:—

Year	Target (Rs. in lakh)	Achievements (Rs. in lakh)
2010-11	135.00	171.00

III. **PRODUCTION CENTRES** : The production activities were taken up in the following centers:—

(a) Cotton carding/Production Centre Arki Distt. Solan

(b) Oil Extraction/ Production Centre, Mandi

The Production target of Rs. 28.00 lakh was fixed for the year 2010-11 against which a production of Rs. 14.11 lakh has been done during the year.

CHAPTER-6

ELEVENTH PLAN 2007-12 AND ANNUAL PLAN 2010 -2011

The Plan outlays for the 10th and 11th Plan are given in the table below. The Plan outlay for the 11th Plan has been enhanced from Rs. 95.73 crore (revised to Rs. 73.99 crore) to Rs 177.68 crore.

6.1 Plan outlays (Rs. in crore)

SL NO.	HEAD OF DEVELOPMENT	Approved outlay 11 th Plan 2007-12	11 TH Plan Expenditure 2007-2011
1.	Village & Small Industries	173.45	89.49
2.	Medium & Large Scale Industries	3.95	3.87
3.	Mineral Development	0.28	0.21
	TOTAL	177.68	93.57

6.2 Annual Plan 2010 -2011

(Un- Reconciled) (Rs. in lakh).

Sr. No.	Head of Development	Annual Plan 2010-11		
		Approved outlay	Revised outlay	Expenditure
Village & Small Industries				
1	Incl. Promotion & Training	22.00	22.00	21.96
2.	Industrial Estate/Area	1372.00	1363.00	1362.83
3.	District Industries Centre			
i	DIC Bldgs	112.00	112.00	112.00
ii	Incl. Schemes	70.27	67.66	65.74
iii	RIP/RAP	99.08	101.08	100.98
4.	Cluster Development Scheme	2.00	0.40	0.00
5	Sericulture Industry.	86.00	87.06	87.02
6	Integrated Handloom Development Scheme	90.30	99.43	98.83
7	State Award to Craft person & Handloom weavers	1.50	1.50	0.00
8	Subsidy to SSI units	9.20	8.67	8.67

9	Development of Handloom Inds.	165.00	190.81	190.68
10	Development of Khadi Inds.	5.00	5.00	5.00
11	Health Insurance Scheme to Weavers	15.65	6.99	6.99
12	Capital works under V&SI	57.00	4.18	4.18
13	GIA to BBND	500.00	500.00	500.00
	TOTAL V&SI	2607.00	2569.78	2564.90
B	Large & Medium Industries			
1	Direction & Administration.	10.00	10.00	10.00
2	Industrial Area Development. & Promotion	26.00	26.00	26.00
3	Arts & Exhibition	78.00	76.15	73.56
	Total L&M	114.00	1112.15	109.56
C	Mineral Development.	6.00	6.00	5.90
	Industry & Minerals	2727.00	2687.93	2680.36

6.3 BUDGET AND EXPENDITURE STATEMENT :

Budget & Expenditure for the Year 2010-11 under D.No. 18 (Plan & Non-Plan)

Head of Accounts	Sanctioned Budget	Actual Expenditure
	(Rs. In '000')	(Rs. In '000')
		(Un-Reconciled)
2057-Supplies & Disposals-101-Purchase		
01-S00N- Establishment of Store Purchase Organisation		
Non-Plan	10549	11630
Plan	0	0
2059-Public Works-01-Office Buildings		
053- Maintenance & Repairs		

16-S00N- Maintenance Exp. of Industries Department		
Non-Plan	1	0
Plan	0	0
2216-Housing-01-Government Residential Building		
106-General Pool Accommodation		
01-S00N- Other Maintenance Expenditure		
Non-Plan	244	244
Plan	0	0
2851-Village & Small Industries		
001- Direction & Administration		
01-S00N-Directorate		
Non-Plan	4391	3850
Plan	0	0
03-C00N-Estt. Of Nuleus Cell		
Non-Plan	0	0
Plan	1783	1415
Total:001		
Non-Plan	4391	3850
Plan	1783	1415
101-Industrial Estates		
02-S00N-Expenses on the Development of Industrial Estates		
Non-Plan	0	0
Plan	2000	2000

05-S00N- Baddi Barotiwala Nalagarh
Development Authority

Non-Plan	10000	10000
----------	-------	-------

Plan	0	0
------	---	---

Total:101

Non-Plan	10000	10000
----------	-------	-------

Plan	2000	2000
------	------	------

102- Small Scale Industries

05-S00N-Subsidy to SSI's

Non-Plan	1	0
----------	---	---

Plan	0	0
------	---	---

10-S00N- Industrial Promotion Programme &
Training

Non-Plan	0	0
----------	---	---

Plan	1300	1300
------	------	------

13-S00N- District Industries Centre

Non-Plan	90169	99293
----------	-------	-------

Plan	9300	9112
------	------	------

20-Cluster Development Programme (90:10)
(Centre/State)

Non-Plan	0	0
----------	---	---

Plan	201	0
------	-----	---

Total:102

Non-Plan	90170	99293
----------	-------	-------

Plan	10801	10412
------	-------	-------

103-Handloom Industries

01-S00N-Development of Handloom Industries

Non-Plan	1	1880
Plan	0	0
09-C00N-Development of Handloom Industries		
Non-Plan	0	0
Plan	1	0
20-Health Package Scheme to Weavers (80:20) (Centre/State)		
Non-Plan	0	0
Plan	500	91
21-S00N-Scheme for State Award to Craft Persons and Weavers		
Non-Plan	0	0
Plan	100	0
22-Integrated Handloom Development Scheme (80:20) (Centre/State)		
Non-Plan	0	0
Plan	6576	31673
Total:103		
Non-Plan	1	1880
Plan	7177	31764
104-Handicraft Industries		
05-S00N-Survey of Handicrafts		
Non-Plan	233	262
Plan	0	0
105-Khadi and Village Industries		
01-S00N-Development of Khadi Industries		
Non-Plan	22000	22000
Plan	0	0
107-Sericulture Industries		

01-S00N-Development of Sericulture Industries		
Non-Plan	39118	40420
Plan	4500	4613
Total:2851-Village & Small Industries		
Non-Plan	165913	177705
Plan	26261	50204
2852-Industries-80-General		
001-Direction and administration		
01-S00N-Directorate		
Non-Plan	22056	21822
Plan	0	0
102-Industrial Productivity		
01-S00N-Dev. of Industrial Area & Promotion Schemes		
Non-Plan	3023	4982
Plan	2600	2600
02-S00N- Incentive to Entrepreneurs in H.P.		
Non-Plan	1	0
Plan	0	0
Total:102-Industrial Productivity		
Non-Plan	3023	4982
Plan	2600	2600
800-Other Expenditure		
01-Arts and Products Exhibition		
Non-Plan	608	469
Plan	7500	7241
Total:2852-Industries		
Non-Plan	25687	27273
Plan	10100	9841

2853-Non-Ferrous Mining & Metallurgical Industries

02-Regulation & Development of Mines-102-Mineral Exploration

01-S00N-Mineral Exploration Staff & Other Activities

Non-Plan	61951	54691
Plan	0	0

Total:2853-Non-Ferrous Mining & Metallurgical Industries

Non-Plan	61951	54691
Plan	200	199

4059-Capital Outlay on Public Works

60-Other Buildings- 051-Construction

01- S00N-Industries

Non-Plan	0	0
Plan	1000	1000

4851-Capital Outlay on Village & Small Industries

102-Small Scale Industries

02-S00N-District Industries Center, Buildings

Non-Plan	0	0
Plan	11200	11200

04-S00N-Development of Industrial Estates

Non-Plan	0	0
Plan	0	2984

Total:102

Non-Plan	0	0
Plan	11200	14184

107-Sericulture Industries

01-S00N-Development of Sericulture Industries

Non-Plan	0	0
Plan	1500	1500

800-Other Expenditure

01-S00N-Exp. on Dev. of Industrial Ares/Estates

Non-Plan	0	0
Plan	133900	130916

02-SOON-Infrastructure Development BBNDA

Non-Plan	0	0
Plan	50000	50000

Total:4851-Capital Outlay on Village & Small Industries

Non-Plan	0	0
Plan	196600	196600

Grand Total: D.No.18

Non-Plan	264345	271543
Plan	234161	25844

Grand
Total:D.No.18
(Plan &

Non-Plan)	498506	529387
-----------	--------	--------

Budget & Expenditure for the Year 2010-11 under D.No. 31(Plan & Non-Plan)

Head of Accounts	Sanctioned Budget	Actual Expenditure
	(Rs. In	(Rs. In '000')

'000')

2851- Village & Small Industries-796- Tribal
Area Sub Plan

01-S00N-Expenditure on Industrial Schemes

Non-Plan 4793 4793

Plan 1720 1648

02-S00N-Expenditure on Industrial Schemes.

Non-Plan 8858 8428

Plan 1027 906

03-S00N-Expenditure on RIP and RAP
Programme

Non-Plan 0 0

Plan 3008 3074

05-A00S-Exp. on Grant-in-Aid/ Contribution/
Subsidies (SCA)

Non-Plan 0 0

Plan 17000 19568

08-S20N-Integrated Handloom Development
Scheme

Non-Plan 0 0

Plan 1030 1145

09-S00N-Health Insurance Scheme

Non-Plan 0 0

Plan 315 140

Total: 2851-Village & Small Industries

Non-Plan 13651 13221

Plan 24100 26481

2852-Industries-80-General-796-Tribal Area Sub
Plan

01-Expenditure on Industrial Schemes

Non-Plan	0	0
Plan	300	115

2853-Non-Ferrous Mining & Metallurgical Inds

02-Regulation & Development of Mines-796-
TASP

01-S00N-Expenditure on Mineral Development

Non-Plan	2401	2227
Plan	400	391

4851- Capital Outlay on Village & Small
Industries

796- Tribal Area Sub Plan

05- SOON- Construction of Industrial Buildings

Non-Plan	0	0
Plan	900	0

Grand Total: D.No.31-TASP

Non-Plan	16052	15448
Plan	25700	26987
Grand Total(P & NP)	41752	42435

CHAPTER – 7

Information under Sub-Clause (II) of Section 4 (1)(b) of the Right to Information Act, 2005)

7.1 The Right to Information Act is being implemented in the Department since 12-10-2005. The Director of Industries has been designated as the Public Authority under the Act. Besides Public Information Officers and Assistant Public Information Officers have been designated to receive applications for supply of information from the public and to provide the information requested.

7.2 Keeping in mind the spirit behind the Act(Section 4 (a) of the Act, efforts are being made to computerize all the Offices so that a soft copy of various records is easily available for supply to public. All the Offices of General Managers. District Industries Centres have been provided computers. The Website of the Industries Department under the Umbrella of the State Govt. Website is being updated regularly to provide information to the public. The address of the website of Industries Department is www.himachal.gov.in/industry. The e-mail address of the Director of Industries is dirindus-hp@nic.in and the public can send e-mails to seek information about Departmental Programmes and Schemes.

1. Particulars of Organisation, functions and duties :

Industries Department is primarily engaged in equitable industrial development of the State, generating maximum employment to its people while maintaining ecological balance and making goods/services of high quality available to people at reasonable prices, promoting entrepreneurship among the people in the State, supplementing the income of rural artisans by their skill development, providing subsidiary employment to the farmers by way of rearing of silkworms, framing policies and programmes for the growth and development of MSE and large industries, creating environment for achieving excellence in conditions that ensures competitive industrial development of industries in the State.

The Organisational Structure of the Department is as indicated under para 2.5 chapter-2 of this report.:—

Functions and Duties

Sl.No.	Particulars	Details
(i)	Particulars of Organisation Functions and Duties	<p>Industries Department, H.P.</p> <p>Functions:</p> <p>To Formulate, Review and Monitor the Development of Industrial / Sericulture and Mining Mineral Activities.</p> <p>Duties:</p> <p>To implement policies formulated by the Government with regard to development of Industrialization, for the regulation of Geological activities, development of Sericulture activities and for the acquisition of Stores by the Government agencies.</p>
(ii)	Powers and duties of its officers	<p>Director of Industries:</p> <p>Head of the Department</p>
		<p>Additional Director of Industries-cum-Additional Controller of Stores :</p> <ol style="list-style-type: none"> I. Store Purchase Organisation & other works relating with Store Purchase Organisation. II. Entire Coordination of Directorate of Industries in important matters assigned to him from time to time. III. (All Branch heads will cooperate with ADI who shall report to DI on these critical issues.) IV. Surprise inspection of the Head Quarter branches, V. DICs etc. VI. Disposal of routine cases, meetings and general control of Directorate in the absence of Director of Industries. VII. All revenue related and Land acquisition

		<p>Matters..</p> <p>VIII. Collector Recoveries.</p> <p>IX. Vigilance cases of the Directorate.</p> <p>X. Establishment of Gazetted/Non- Gazetted officers cases.</p> <p>XI. Inspection and general supervision of Hqrs. Branches & DIC's.</p> <p>XII. Planning.</p> <p>XIII. Follow up of Inspections reports of DIC's.</p> <p>XIV. All matters relating to Budget, reconciliation, accounts, stores, record, Diary and Dispatch.</p> <p>XV. Maintenance of Directorate Building.</p> <p>XVI. Monitoring of Court Cases on monthly basis.</p> <p>XVII. Controlling Officer for Vehicles.</p> <p>XVIII. All residual matter not assigned to any other officer.</p> <p>XIX. Nodal officer for I.T. matters.</p>
		<p>Industrial Advisor:</p> <p>I. Industrial Policy.</p> <p>II. Employment and Planning .</p> <p>III. SSI Registration and policy related issues.</p> <p>IV. All matters relating to Food Processing and coordination with the Govt. of India projects.</p> <p>V. Governor's address and Finance Minister's and other Ministers speeches.</p> <p>VI. BBNDA.</p> <p>VII. Handloom Handicrafts, Khadi programme</p> <p>VIII. Institutions related with programme.</p>

		<p>IX. Matter relating with Handicraft and Handloom Corporation and all India Institutions of Handicrafts and Handloom.</p> <p>X. Matter relating with H.P. State Khadi & Village Industries Board and all India Khadi Commission.</p> <p>XI. Implementation & monitoring of centrally sponsored Schemes relating to Handicrafts and Handloom sector.</p> <p>XII. Administration of Central/ State Awards pertaining to Handlooms and Handicrafts) and National awards to Small Scale entrepreneurs.</p> <p>XIII. Administration of incentives and subsidies CTS/CIS.</p> <p>XIV. VIP references on employment generation.</p> <p>XV. H.P. Pollution Control Board and other Corporations.</p>
		<p>Joint Director of Industries(SP):</p> <p>I. Store Purchase Organization (Mechanical Items)</p> <p>II. Store purchase with respect to Electrical, chemical, Textile & miscellaneous items.</p> <p>III. Nahan Foundry.</p> <p>IV. Executive Director, HPCED.</p> <p>V. EDP/IAP.</p>
		<p>Joint Director of Industries</p> <p>I. Monitoring of employment, creation of Data Cell and information with respect to employment generation.</p> <p>II. All type of allotment/cancellation of Plots/sheds/shops.</p> <p>III. Transfer of lease hold rights.</p>

		<p>IV. Rent permission for Govt. Plots.</p> <p>V. Determination of premium of plots/sheds.</p> <p>VI. Development of Industrial Area / Estates.</p> <p>VII. Eligibility Certificates and other certificates including incentive eligibility.</p> <p>VIII. Essentiality Certificate for the purchase of private land.</p> <p>IX. Banks & Financial Institutions.</p> <p>X. Industrial Sickness.</p>
		<p>Deputy Director of Industries (Project):</p> <p>I. NRTC (Common Testing Centre).</p> <p>II. Central Tool Room /Mini Tool Room.</p> <p>III. Setting of SEZ.</p> <p>IV. All Industrial Developmental Schemes of GOI, its supervision control, evaluation, monitoring such as IID's/Growth Centre/EPIP/ASIDE/ Industrial Estates and other schemes of Infrastructure Development of Govt. of India.</p> <p>V. Organization of Job and job carrier fairs.</p> <p>VI. Fair and Exhibition Including IITF.</p> <p>VII. All work related to formulation of Procurement Act including World Bank related matter.</p> <p>VIII. Computerization.</p> <p>IX. Registration and approval of Medium and Large Scale projects.</p> <p>X. Cement Plants</p> <p>XI. Implementation of provisions of Indian Boiler Act, 1923, as Chief Inspector of Boilers for the State of H.P.</p> <p>XII. Implementation of Household electrical appliances quality control order, 1981.</p> <p>XIII. Capacity assessment.</p>

		<p>Dy. Director of Industries(DIC) :</p> <ol style="list-style-type: none"> I. D.I.Cs including D.I.C. Buildings. PMEGP/ Rajiv Gandhi Udyami Mitar Yojana Monthly report/ Quarterly Progress reports to be sent to Director (PMEGP), New Delhi. II. Matters relating to all Corporations and Board of H.P. Govt. III. All matters concerning different Industrial Association and coordination with these Associations in the State of H.P. IV. Annual Administrative report of the Department. V. RIP/RAP VI. Nucleus Cell. VII. Industrial/Rural Development Programme VIII. Rural Planning Committee Estimate Committee, 20 Point and Governor Secretariat Report. IX. Work related to all Committee.
		<p>Deputy Director of Industries (Seri)</p> <ol style="list-style-type: none"> I. Sericulture. II. Formulation of Sericulture Projects through Project Coordinator.
		<p>Tehsildar:</p> <ol style="list-style-type: none"> I. Loan Recovery and to assist the Additional Director of Industries in exercising powers of Collector. II. All Revenue related matters and Acquisition matters through Additional Director of Industries. III. Disaster Management/ Damage caused by floods.
		<p>Assistant Controller (F&A):</p> <ol style="list-style-type: none"> I. Drawing and Disbursing Officer.

		<p>II. Draft replies to PAC/CAG reports.</p> <p>III. Coordination of all correspondence with the Accountant General, Himachal Pradesh relating to Audit & Inspection Reports/Integrated Audit/Draft paras etc.</p> <p>IV. Internal Audit of Field Officers and Assistance in office inspection.</p>
		<p>Store Inspection Officer (Textile):</p> <p>I. Technical Member of Technical Scrutiny Committee in codes: C-01,C-02(3), C-20, C-25, C-26,C-40, M-38,M-39, M-44,M-44(02), M-58, M-59, M-65, M-78, M-84, M-115, M-118, T-04, T-05, T-27(01), T-34.</p> <p>II. Store Inspection Officer of all the sample articles deposited in Sample Store.</p> <p>III. Finalization of Schedule-A of various codes.</p> <p>IV. Files pertaining to Store Purchase Rules shall be routed through him to JDI/ ACS.</p> <p>V. All matters pertaining to Handloom and Handicraft, Khadi Board and other correspondence of Handloom Section through Industrial Advisor.</p>
		<p>Law Officer:</p> <p>I. Maintenance of record of Court Cases of Department and their follow up.</p> <p>II. To pursue the Court Cases of Hon'ble H.P. High Court, H.P. Administrative Tribunal and subordinate Courts for preparing, vetting and filing replies thereof and assisting Advocate General, Dy. Advocate General etc. during the hearing of cases.</p> <p>III. Preparation of status of Court matters for quarterly review.</p>

(ii) Powers & duties of the officers and employees :

All the officers and employees perform their duties and exercise powers in accordance with the delegation made by the Government in general with regard to duties and responsibilities common in nature and being performed in all the Departments. For the purpose, delegation of power as made under different set of rules viz. H.P.F.R., F.R., S.R., CCS(CCA) Rules and Conduct Rules can be referred to.

As regards specific activities of Industries Department, duties and powers of the officers and employees have been prescribed in the rules and regulations in vogue for regulating the activities.

(iii) Procedure followed in the decision making process, including channels of supervisions and accountability

There is a hierarchy of officers and officials to accomplish the activities. In the field, Department has a functionary at the lowest level in each Development Blocks, namely Extension Officer and Mining guard for mining activities and Sericulture Inspectors at Sericulture Centre level. They are responsible to get the policies implemented at the grass root level. They work under the overall control of General Managers, District Industries Centres/Dy. Director (Sericulture)/Silk Seed Production Officers /Mining Officers. There is a hierarchy of Officers which is shown in the Organisational Structure.

Periodic inspections are conducted by the Supervisory Officers to have effective control on the Field Offices.

As regards the decision making process, and conduct of Govt. business, procedure laid down under the Office Manual for Govt. Offices is followed.

(iv) Norms set by the Department for the discharge of its functions :

Different functions of the Department at various levels are performed in accordance with the Policies and as per delegation of powers made by the Government. Norms for discharge of various functions are as provided in the Office Manual for Govt. Offices.

(v) Rules, Regulations, Instructions, Manual and records held by Department under its control :

Following Rules, Regulations and Manuals have been prescribed to regulate the activities of the Department:—

Sr. No.	Activity	Act/Policy or Rules in vogue
1.	Setting up of Industries and administration of incentives, allotment of land in industrial areas.	i) Industries (Development & Regulation) Act, 1957 ii) IADA Rules. iii) Central Transport Subsidy Scheme. iv) Industrial Policy and Incentive Rules, 2004 v) Central Capital Investment Subsidy Manual.
2.	Mining Activities	i) H.P Minor Mineral Concessions Revised Rules, 1971 (ii) Mineral Conservation and Development Rules, 1958. iii) H.P. Vesting of Mineral Rights Act-1983 (iv) Mineral Concession Rules, 1960. v) H.P. General Sales Tax Act, 1968 (vi) The Himachal Pradesh Minerals (Prevention of Illegal Mining, Transportation and Storage) Rules, 2004". vii) Instructions pertaining to mineral development and regulations. vii) Forest Conservation Act, 1980. viii) Payment of wages(Mines) Rules 1956.
3.	Acquiring of Stores	Procedure and Rules for the Purchase of Stores by all Departments and Offices of Government of H.P H.P.F.R. 2009.
4.	Firm Registration	Indian Partnership Act-1932
5.	Self employment.	Guidelines under Prime Minister Rojgar Yojana issued by the Govt. of India, Ministry of ARI.

6.	Development of Sericulture Activities.	Guidelines for the implementation of Catalytic Development Programme in H.P.
7.	Rural Artisan/Industries Programme	Guidelines under the Scheme
8.	Promotion of Handloom activities.	i) Rules for regulating the payment of Grant-in Aid to H.P. State Handloom & Handicrafts Corporation, 1956. ii) Handlooms(Reservation of articles for production) Act-1985.
9.	Development of Export Infrastructure	Guidelines for Central Assistance to States for Developing Export Infrastructure and other Allied Activities.
10.	Development of Khadi & Village Industries.	i) H.P. Khadi & Village Industries Act,1966 ii) Rules for regulating the payment of Grant-in Aid to H.P. Khadi & Village Industries Board, 1972.
11.	Quality Control/Safety	i) The Indian Boilers Act, 1923 ii) Indian Explosive Act, 1988. iii) The Environment Protection Act,1986. iv) Household Electrical Appliances (Quality Control) Order, 1981 v) Lubricants Control Order vi) Cement Control Order.
11.	Land Acquisition/grant of Essentiality Certificate.	i) Land Acquisition Act,1894. ii) H.P. Tenancy and Land Reforms Act,1972
12.	Recruitment & Promotion of Staff.	Recruitment & Promotion Rules for various categories of staff
13.	Allotment of Govt. Accommodation.	H.P. Allotment of Govt. Residences (General Pool) Rules, 1994.

(vi) Statement of categories of the documents that are held by the Department or under its control.

1. Case files relating to setting up of Industrial Units.
 - i) Provisional Registration
 - ii) Approval of expansion proposals in SSI sector.
 - iii) Permanent Registration
 - iv) Approval of proposals under Medium & Large Scale Sector.
 - v) Approval of expansion proposals in M&L sector.
 - vi) Records pertaining to grant of Essentiality Certificate for purchase of land.
 - vii) Records pertaining to inspection of Boilers.

Records pertaining to provisional registration done/expansion proposals approved at District level is available at the District level. Records pertaining to Permanent Registration of SSI units and Grant of Certificate of Commencement of Commercial Production is available at the District level. However, records pertaining to approval of projects in Medium & Large Scale Sector including cases in SSI sector approved by the State Level Single Window Clearance Authority at Directorate level and grant of Essentiality Certificate, Inspection of Boilers are available at the Directorate level.

2. Case files relating to allotment of Industrial plots/ Sheds in Industrial Areas.
3. PMGEP:- Record of applications received of the applicants under PMGEP is available at the District level Offices. Record of progress reports supplied under the Scheme is available at Directorate level.
4. RIP/RAP:- Record of applications received of the applicants/ Master-craftsmen under Rural Industries/Artisan Programme is available at the District level Offices. Record of progress reports supplied under the Scheme is available at Directorate level.
5. Case files relating to grant of mineral concessions for :—

- i) Short Term Permits
- ii) Mining Leases
- iii) Contracts.
- iv) Illegal Mining
- v) Court cases.
- vi) Public Complaints.
- vii) Mineral Exploration (prospecting and proving of mineral deposit)
- viii) Geo-technical Studies (Geotechnical studies of roads, bridges, land slides as and when referred by some agency like PWD, IPH, Administration and other geo technical studies)

Records of Short Term Permits issued by the Mining Officers are available at district level. Record of Short Term Permits issued by the State Geologist is available at State level. Records pertaining to illegal mining is also available at the District level.

6 Case files and papers concerning Registration of Firms for:-

- i) Store Purchase.
- ii) Approval of NIT.
- iii) Bids offered by the participating firms, acceptance of rates offered and award of rate contracts.

Case files pertaining to allotment of Budget to field Offices.

Case files pertaining to sanctions issued for construction/repairs of Office building/residential buildings.

Annual Confidential Reports of the Staff.

Case files pertaining to monitoring of various schemes such as 20 Point Programme, Employment Generation Programme, registration of SSI units etc.

Correspondence pertaining to formulation of Industrial Policy, Industrial Policies & Incentive Rules, Special Package of incentives etc.

Case files pertaining to Transport Subsidy.

Case files pertaining to Central Investment Subsidy.

Case files pertaining to monitoring of Sericulture activities.

Case files pertaining to monitoring of land acquisition.

Case files pertaining to monitoring of Recovery of industrial loans.

Case files pertaining to disciplinary action/ departmental enquiries.

Case files pertaining to Audit Paras and Reports.

Case files pertaining to various exhibitions.

Case files pertaining to training of educated youth for self employment and utilization of funds for the same.

Correspondence pertaining to Vidhan Sabha Matters/Reports.

Annual Administrative Report of the Department.

(vii) Particulars of any arrangement that exists for consultation with, or representation by, the members of the public in relation to the formulation of its policy or administration thereof.

For Industrial policy formulation Department consults PHD Chamber of Commerce & Industry, Confederation of Indian Industry and other Industrial Associations. Under Rural Artisan Programme/Rural Industries Programme, recommendations of the representatives of the concerned local bodies are taken with account while opening training centres for the beneficiaries. For granting mineral concessions, recommendations of the concerned Gram Sabhas have been made mandatory. Under Entrepreneurship Development Programmes, the selection of beneficiaries is done in consultation with the local bodies.

(viii) Statement of the Boards, Councils, Committees and other bodies consisting of two or more persons constituted as its part of or for the purpose of its advice and as to whether meetings of those Boards, Councils, Committees and other bodies are open to the public or the minutes of such meetings are accessible for public.

The Department has provided representation to the Industrial Associations/ Industrial Units in the State Level Export Promotion Committee (SLEPC) and its proceedings are accessible to its Members/public. The representation has also

been provided to the Industrial Associations in Small Scale Industries & Services Board. A new scheme by the name of Prime Minister Employment Generation Programme (PMEGP) was launched by Government of India on 15.8.2008 in which District Task Force has been constituted in each district under the chairmanship of Deputy Commissioner in which three members from Panchayat are to be nominated by the concerned Deputy Commissioner. The representatives of the Industrial Associations are included in the Industrial Area Development Agencies set up in Industrial Areas in the Districts. Representation has also been given to the representatives of Cocoon rearers Associations in the Purchase Committees constituted for the purchase of cocoon from the rearers. In addition, Non-Official Members have been made director on the Board of Directors of H.P. State Industrial Development Corporation, H.P. General Industries Corporation, H.P. State Handloom and Handicraft Corporation and H.P. State Khadi and Village Industries Board who are under the administrative control of the Department

(ix)&(x) Directory of Officers/employees and pay scale of the Department.

Name of Department: Industries Department, H.P.

Sl. No.	Designation	Pay Scale
1.	Commissioner Industries	37400-67000+10000
2.	Addl. Director of Industries-cum-Addl. Controller of Stores	37400-67000+8700
3.	State Geologist	15600-39100+7800
4.	Industrial Advisor	15600-39100+7600
5.	Joint Director of Industries	15600-39100+6600
6.	Geologist	15600-39100+6600
7.	Sr. Technical Officer	15600-39100+6000
8.	General Manager (HAS)	15600-39100+5400

9.	Dy. Director of Industries (Seri.)	10300-34800+5400
10.	General Manager (DIC)/ Dy. Director of Industries	10300-34800+5400
11.	Private Secretary	10300-34800+5000
12.	Superintendent Gr-I	10300-34800+5000
13.	Asstt. Controller (F&A)	10300-34800+5000
14.	Asstt. Geologist	10300-34800+5000
15.	Chemist	10300-34800+5000
16.	Tehsildar	10300-34800+4400
17.	Manager (DIC)	10300-34800+4400
18.	Driller	10300-34800+4400
19.	Asstt. Chemist	10300-34800+4400
20.	Section Officer (Audit)	10300-34800+4400
21.	Sr. Draughtsman	10300-34800+4400
22.	Head Draughtsman	10300-34800+4200
23.	Store Inspection Officer	10300-34800+4200
24.	Research Officer	10300-34800+4200
25.	SSPO/SO	10300-34800+4200
26.	Naib Tehsildar	10300-34800+4200
27.	Mining Officer	10300-34800+4200
28.	Supdt. Gr-II	10300-34800+4200
29.	Law Officer	10300-34800+4200

30.	Industrial Promotion Officer	10300-34800+4200
	Personal Assistant	10300-34800+4200
31.	Senior Assistant	10300-34800+3800
32.	Sr. Scale Stenographer	10300-34800+3800
33.	Administrative Officer(IA)	10300-34800+3800
34.	Economic Investigator	10300-34800+3800
35.	Store Examiner	10300-34800+3800
36.	Junior Engineer	10300-34800+3800
37.	Dev. Officer (Seri.)	10300-34800+3800
38.	Draughtsman	10300-34800+3800
39.	Investigator	10300-34800+3600
40.	Extension Officer (Inds.)	10300-34800+3600
41.	Kanungo	10300-34800+3600
42.	Senior Surveyor	10300-34800+3600
43.	Techometrist	10300-34800+3600
44.	Technical Assistant (Geology/Chemistry)	10300-34800+3600
45.	Asstt. Driller	10300-34800+3600
46.	Foreman(Drilling)	10300-34800+3600
47.	Computer Operator	10300-34800+3200
48.	Manager (Incl. Area)	10300-34800+3200
49.	Lab Assistant (Patriology)	10300-34800+3200

50.	Jr. Scale Stenographer	5910-20200+2800
51.	Technical Officer (Tassar)	5910-20200+2800
52.	Demonstrator	5910-20200+2800
53.	Mulberry Superintendent	5910-20200+2800
54.	Research Assistant	5910-20200+2800
55.	Technical Supervisor	5910-20200+2800
56.	Sr. Sericulture Inspector	5910-20200+2800
57.	Extension Officer (Tassar)	5910-20200+2800
58.	Tech.Asstt.(Tassar)	5910-20200+2800
59.	Mining Inspector	5910-20200+2800
60.	Lab.Asstt.(Chemistry)	5910-20200+2800
61.	Library Assistant	5910-20200+2400
62.	Reeling Demo.	5910-20200+2400
63.	Surveyor	5910-20200+2400
64.	Drilling Assistant	5910-20200+2400
65.	Asstt. Mining Inspector	5910-20200+2400
66.	Junior Draughtsman	5910-20200+2400
67.	Mechanic Grade-I	5910-20200+2400
68.	Steno typist	5910-20200+2000
69.	Driver	5910-20200+2000
70.	Patwari	5910-20200+1900
71.	Clerk	5910-20200+1900

72	Seri. Inspector/ Farm Asstt./Moth Tester/ Grainage Supervisor	5910-20200+1900
73.	Seri.Operator(Tassar)	5910-20200+1900
74.	Mechanic	5910-20200+1900
75.	Ferro Printer	5910-20200+1900
76.	Section Cutter	5910-20200+1900
77.	Rigman	5910-20200+1900
78.	Gestetner Operator	4900-10680+1650
79.	Jamadar	4900-10680+1400
80.	Daftari	4900-10680+1400
81.	Technical Bearer	4900-10680+1400
82.	Field Attendant	4900-10680+1400
83.	Mulbery Sub-Insp./ Seed Examiner/ Fieldman/ Budder	4900-10680+1400
84.	Peon	4900-10680+1300
85.	Mali-cum-Chowkidar/Peon-cum-Chowkidar/ Chowkidar	4900-10680+1300
86.	Process Server	4900-10680+1300
87.	Sweeper/Sweeper-cum-Chowkidar	4900-10680+1300
88.	Laboratory Attendant	4900-10680+1300
89	Khalasi	4900-10680+1300
90	Unskilled Worker/ Worker	4900-10680+1300
91.	Mining Guard	4900-10680+1300

92.	Mali/ Beldar	4900-10680+1300
93.	Rearing Asstt (Tassar)	4900-10680+1300
94.	Mannual Asstt.-cum-Chowkidar	4900-10680+1300

(xi) Budget allocated to each of its agency, indicating the particulars of all plans, proposed expenditures and reports on disbursement made

Details have been uploaded in the website of the Industries Department.

(xii) The Manner of execution of subsidy programmes, including the amount allocated and the details of beneficiaries of such programmes

PMEGP:- Back-End subsidy is provided under the Prime Minister Employment Generation Programme after a period of three years by Reserve Bank of India through the concerned banks to the beneficiaries of different categories in the different areas as per following rates:-

Category	Urban Area	Rural Area	
	1. General	15%	25%
	2. Reserved	25%	35%

RIP/RAP:- Tool-kit after their training is to be provided on 100% subsidy basis with a subsidy ceiling of Rs. 500.00 to the beneficiaries.

Capital Investment Subsidy:- All new Industries in the notified locations are eligible for Capital Investment Subsidy @ 15% of their investment in Plant and Machinery subject to the ceiling of Rs. 30 lakh. The existing units are also entitled to this subsidy on their substantial expansion.

Central Transport Subsidy:- Industrial Units location in Himachal Pradesh are entitled for 75% of the cost of the transportation of their finished goods and for raw materials from the location of their units any where in the State to the nearest specified broad gauge rail road.

Subsidy under Catalytic Development Programme is provided as per the guidelines provided by the Govt. of India.

Subsidy under Handloom Sector Schemes are also being provided as per the guidelines under these schemes.

(xiii) Particulars of recipients of concessions, permits or authorizations granted by the Department

Farmers, weavers, artisans, workers, educated unemployed youth, entrepreneurs, industrialists who are engaged/interested to engage in the production of cocoons, processing, weaving, crafting and designing of textiles and clothing in the organized and unorganized sectors, production of goods and services, self employment ventures in urban and rural areas in the State, public in general and various other agencies interested in getting mineral concessions and requiring geo-technical studies/investigations of bridges, buildings, land-slides, road alignments, hydro-electric projects, I&PH schemes etc. in the State. The details of recipient of concessions are available with the respective District Offices and can be had from the concerned Public Information Officers.

(xiv) Details in respect of the information available to or held by the Department reduced in an electronic form

Information of public interest has been provided in the Website www.himachal.nic.in/industry of the Department. In addition, the Department is also implementing various Centrally Sponsored Schemes and the details about these schemes are also available in the websites of the concerned Ministries.

(xv) The particulars of facilities available to citizens for obtaining information, including the working of a library or reading room, if maintained, for public use.

The Public can have information from the concerned Public Information Officers of the Department. The information of common interest can also be had from the website www.himachal.nic.in/industry of the Department under the Official Website of the State Govt. which is being updated from time to time to provide additional information to public.

The names, designations and other particulars of the Public information Officers.

List of Public Information Officers in respect of Industries Department is given as under:—

I. H.P. Sectt. Administrative.Level.

Sr. No.	Designation by post	Designation	Complete Office Address	Office Telephone No.	Jurisdiction/ Units under his control for which he will be rendering information to applicants
1.	Addl. Chief secretary/ Pr. Secretary (Inds,) to the Govt. of H.P.	Appellate Authority	H.P. Secretariat, Shimla-2	0177/ 2621902	Administrative Department level at Secretariat
2.	Special Secy/Addl. Secy./Joint Secy./Dy. Secy./Under Secy(as the case may be) to the Govt. of H.P.	State Public Information Officer(s)	H.P. Secretariat, Shimla-2	0177/ 2624646	Administrative Department level at Secretariat Industries A & B, Branches
3.	Section Officers or Superintendents of Industries A & B, Branches	State Assistant Public Information Officer(s)	H.P. Secretariat, Shimla-2	0177/ 2880436 &2880437	Administrative Department level

II. Directorate level

DIRECTORATE OF INDUSTRIES

DEPARTMENT/PUBLIC AUTHORITY DIRECTOR OF INDUSTRIES H.P.
STATE LEVEL PROFORMA

DIRECTORATE OF INDUSTRIES

Sr. No.	Designation by post	Designation	Complete Office Address	Office Telephone No.	Jurisdiction/ Units
1.	Director of Industries	Appellate Authority	Udyog Bhavan	0177/ 2813414	Directorate of Industries and Field Offices

Updated list of PIOs/APIOs in respect of Industries Department upto 30.6.2010

DEPARTMENT/PUBLIC AUTHORITY DIRECTOR OF INDUSTRIES H.P.

Sl. No.	Name of PIO/APIO	Designation & Office address	Jurisdiction[area/subject]	e-mail (if any)	Telephone/ Fax number (Office) (Resi.)
1.	Sh. R.R. Patyal	Dy. Director of Industries Directorate of Industries, Himachal Pradesh, Udyog Bhawan, Shimla	Directorate of Industries and Himachal Pavilion, Delhi.	ddind1-hp@nic.	0177/ 2650659
2.	Sh. Inderesh Dhiman	Geologist, Geological Wing, Directorate of Industries, Himachal	Area falling under Geological Wing at State	g1ind-hp@nic.in	0177/ 2652499

		Pradesh, Shimla-1.	Headquarters.		
--	--	--------------------	---------------	--	--

DISTRICT LEVEL PROFORMA

DEPARTMENT/PUBLIC AUTHORITY DIRECTOR OF INDUSTRIES H.P.

Sl. No.	Name of PIO/APIO	Designation & Office address	Jurisdiction [area/subject]	e-mail (if any)	Telephone/ Fax number (Office)
Name of the Public Information Officers(PIOs)					
1.	Sh. Ghanshyam Chand	General Manager O/o the General Manager, Distt. Industries Centre, Shimla, Udyog Bhawan, Shmla (H.P.)	Area falling under DIC, Shimla.	gmdicsmlhp@nic.in	0177/2803486
2.	Mrs. Reema Kashyap (HPAS)	General Manager O/o the General Manager, Distt. Industries Centre, Solan, Distt. Solan (H.P.)	Area falling under DIC, Solan excluding area under SWCA, Parwanoo & Baddi.	gmdicslnhp@nic.in	01792/230528
3.	Sh. Chand Parkash Sharma	General Manager O/o the General Manager, Distt. Industries Centre, Sirmour at Nahan, Distt. Sirmour(H.P.)	Area falling under DIC, Nahan excluding area under SWCA, Paonta Sahib.	gmdicnhnhp@nic.in	01702/222259
4.	Sh A.N.Dhiman	Manager O/o the General Manager, Distt. Industries Centre, Bilaspur, Distt. Bilaspur (H.P.)	Area falling under DIC, Bilaspur excluding area under SWCA, Galthai.	gmdicblp-hp@nic.in	01978/224248

5.	Sh. Prabhat Chand	General Manager O/o the General Manager, Distt. Industries Centre, Hamirpur, Distt. Hamirpur (H.P.)	Area falling under DIC, Hamirpur	gmdichmrhp@nic.in	01972/222309
6.	Sh. Jai Gopal Sharma	General Manager O/o the General Manager, Distt. Industries Centre, Una, Distt. Una (H.P.)	Area falling under DIC, Una	gmdicunahp@nic.in	01975/223002
7.	Sh. Satish Kumar	General Manager O/o the General Manager, Distt. Industries Centre, Dharmashala, Distt. Kangra (H.P.)	Area falling under DIC, Dharamshala excluding area under SWCA, Sansarpur Terrace.	gmdickgahp@nic.in	01892/223242
8.	Sh. Thakur Singh Negi	General Manager O/o the General Manager, Distt. Industries Centre, Chamba, Distt. Chamba (H.P.)	Area falling under DIC, Chamba	gmdiccbahp@nic.in	01899/222257
9.	Sh. A.N. Dhiman	General Manager O/o the General Manager, Distt. Industries Centre, Mandi, Distt. Mandi (H.P.)	Area falling under DIC, Mandi.	gmdicmndhp@nic.in	01905/222161
10	Sh. Sanjay Sharma	General Manager O/o the General Manager, Distt. Industries Centre, Kullu, Distt. Kullu (H.P.)	Area falling under DIC, Kullu	gmdickluhp@nic.in	01902/222532
11.	Sh. Sar Chander Negi	General Manager O/o the General Manager, Distt. Industries Centre, Reckong-Peo	Area falling under DIC, Kinnaur at Reckong Peo	gmdicknrhp@nic.in	01786/222276

		Distt. Kinnaur (H.P.)			
12	Sh. Chamn Lal Sharma	General Manager O/o the General Manager, Distt. Industries Centre, Keylong, Distt. Lahaul & Spiti (H.P.)	Area falling under DIC, Lahaul Spiti at Keylong	gmdicls-hp@nic.in	01900/222265
13.	Sh. Ajay Kumar Kulshreshth	Deputy Director of Industries (Sericulture), Sericulture Division Shimla Directorate of Industries, Himachal Pradesh, Udyog Bhawan, Shimla	Area falling under Sericulture Division, Shimla & Solan	ddis-hp@nic.in	0177/2658127
14	Sh. Chand Sharma	General Manager O/o the General Manager, Distt. Industries Centre, Sirmour at Nahan, Distt. Sirmour (H.P.)	Area falling under Sericulture Division Sirmour District.	ddserisir-hp@nic.in	01702/222259
15.	Sh. Om Swaroop Sharma	Silk Seed Production Officer O/o the Silk Seed Production Officer Palampur, Distt.Kangra (H.P.)	Area falling under Sericulture Division, Palampur, Distt. Kangra.	ddseriplp-hp@nic.in	01894/231157
16.	Sh. Vijay Kumar Mehta	Sericulture Officer, Dehra O/o the Sericulture Officer, Dehra Distt. Kangra (H.P.)	Area falling under Sericulture Division, Dehra		01970/233679
17.	Sh. Vijay Kumar Mehta	Silk Seed Production Officer O/oSilk Seed Production Office, Nadaun, Distt.	Area falling under Sericulture Division, Nadaun	ssponad-hp@nic.in	01972/232635

		Hamirpur (H.P.)			
18.	Sh. Baldev Chauhan	Silk Seed Production Officer O/o Silk Seed Production Office, Ghumarwin, Distt. Bilaspur (H.P.)	Area falling under Sericulture Division, Ghumarwin	sspobil-hp@nic.in	01978/224248
19.	Sh. Baldev Chauhan	Sericulture Officer (Tassar) O/o Sericulture Officer (Tassar) Mandi, Distt. Mandi (H.P.)	Area falling under Sericulture Division, Mandi.	seroman-hp@nic.in	01905/222933
20.	Sh. Rajeev Kalia	Mining Officer O/o the Mining Officer, Shimla, Udyog Bhawan, Shimla (H.P.)	Area falling under Mining Office, Shimla	mosml-hp@nic.in	0177/2652499
21.	Sh. Suresh Kumar	Mining Officer O/o the Mining Officer, Solan, Distt. Solan (H.P.)	Area falling under Mining Office Solan	mosln-hp@nic.in	01792/230528
22.	Sh. Sanjeev Kumar	Mining Officer O/o the Mining Officer, Nahan, Distt. Sirmour (H.P.)	Area falling under Mining Office, Nahan	monhn-hp@nic.in	01702/222259
23.	Sh. Anshul Dhiman	Mining Officer O/o the Mining Officer, Bilaspur, Distt. Bilaspur (H.P.)	Area falling under Mining Office, Bilaspur	moblp-hp@nic.in	01978/224248
24.	Sh. Prabhat Chand	General Manager-cum-Mining Officer O/o the Mining Officer, Hamirpur Distt. Hamirpur (H.P.)	Area falling under Mining Office, Hamirpur	mohmr-hp@nic.in	01972/221520
25.	Sh. Paramjeet Singh	Mining Officer O/o the Mining Officer, Una, Distt. Una (H.P.)	Area falling under Mining Office, Una	mouna-hp@nic.in	01975/223002
26.	Sh. Ashok Sharma	Mining Officer O/o the Mining Officer, Dharamshala, Distt. Kangra	Area falling under Mining Office, Dharamshal	mokga-hp@nic.in	01892/223242

		(H.P.)	a		
27.	Sh. Thakur Singh Negi	General Manager-cum-Mining Officer O/o the Mining Officer, Chamba, Distt. Chamba (H.P.)	Area falling under Mining Office, Chamba	mocba-hp@nic.in	01899/222257
28.	Sh. Puneet Kumar	Mining Officer O/o the Mining Officer, Mandi, Distt. Mandi (H.P.)	Area falling under Mining Office, Mandi	momnd-hp@nic.in	01905/223342
29.	Sh. Sanjay Sharma	General Manager-cum-Mining Officer O/o the Mining Officer, Kullu, Distt. Kullu (H.P.)	Area falling under Mining Office, Kullu	moklu-hp@nic.in	01902/222532
30.	Sh. Sar Chander Negi	General Manager-cum-Mining Officer O/o the Mining Officer, Kinnaur at Reckong Peo, (H.P.)	Area falling under Mining Office, Reckong Peo, Distt. Kinnaur.	moknr-hp@nic.in	01786/222253
31.	Sh. Chaman Lal	General Manager-cum-Mining Officer O/o the Mining Officer, Lahaul & Spiti at Keylong, (H.P.)	Area falling under Mining Office, Keylong, Distt. Lahaul & Spiti	mols-hp@nic.in	01900/222265
32.	Sh. Sudhir Kumar	Deputy Director of Industries, O/o the Deputy Director of Industries Single Window Clearance Agency, Baddi, District Solan (H.P.)	Area falling under SWCA, Baddi.	swcbdi-hp@nic.in	01795/244222
33.	Sh. A.R. Verma	Member Secretary, Single Window Clearance Agency O/o Member Secretary, Single Window	Area falling under SWCA, Parwanoo.	swcpwn-hp@nic.in	01792/233586

		Clearance Agency, Parwanoo, District Solan (H.P.)			
34.	Sh. Gian Singh Chauhan	Member Secretary, Single Window Clearance Agency O/o Member Secretary, Single Window Clearance Agency, Paonta Sahib, District Sirmour (H.P.)	Area falling under SWCA, Paonta Sahib.	swcpta-hp@nic.in	01704/222410
35.	Sh. Ramesh Verma	Member Secretary, Single Window Clearance Agency O/o Member Secretary, Single Window Clearance Agency, Kala-Amb, District Sirmour (H.P.)	Area falling under SWCA, Kala-Amb		98160/78088
36.	Sh. Munish Ram,	Member Secretary, Single Window Clearance Agency O/o Member Secretary, Single Window Clearance Agency,, Damtal District Kangra (H.P.)	Area falling under SWCA, Damtal, Distt. Kangra.		94180/10660
37.	Sh. Vijay Chaudhry	Member Secretary, Single Window Clearance Agency O/o Member Secretary, Single Window Clearance Agency, Sansarpur Terrace District Kangra (H.P.)	Area falling under SWCA, Sansarpur Terrace.	swast-hp@nic.in	01970/256480
38.	Sh. Anshul Dhiman	Member Secretary, Single Window Clearance Agency	Area falling under SWCA,		98160/56946

		O/o Member Secretary, Single Window Clearance Agency, Goalthai, District Bilaspur(H.P.)	Goalthai		
39	Sh. Tilak Raj	Member Secretary, Single Window Clearance Agency O/o Member Secretary, Single Window Clearance Agency, Nalagarh, District Solan (H.P.)	Area falling under SWCA, Nalagarh		98160/44622

During the year 2010-11, 675 applications were received by the Industries Department including the Board and Corporations under its Administrative control from the public for the supply of information. In 46 cases, the information was refused and in 18 cases the applicants filed appeals with the Appellate Authority out of which all 14 appeals were accepted. In 5 cases appeals were filed with the State Chief Information Commissioner out of which both 4 appeals were accepted. An amount of Rs 38424 was received as fee for the supply of documents during the year.

The Department/Board/Corporation wise position of applications received, information provided, fee recovered etc. is at Annexure-C

ANNEXURE – A

Staff position in respect of Industries Department

As on 31-3-2011

Sl. No.	Category	Sanctioned posts	Vacant
1	Class-I	47	15
2.	Class-II	121	36
3.	Class-III	605	246
4.	Class-IV	445	58
Total		1218	355

Annexure-B

Contact telephone numbers of the Officers of Industries Department Secretariat Level

Sl.No.	Designation	Name of Officer	Office	PBX	Resi.
1.	Industries Minister, Govt. of H.P.	Sh. Kishan Kapoor	2622464	636	2625175
2.	S.P S. to Industries Minister	Sh. Lokender Sharma	2622464	736	2620387
1.	Addl. Chief Secretary (Inds)	Ms Harinder Hira, IAS	2621902	608	2842766
2.	Under Secretary (Industries)	Shri Baldev Thakur	2624646	663	2621073

Directorate of Industries

Sl.No.	Designation	Name of Officer	Office	PBX	Resi.
1.	Director of Industries	Sh J.S.Rana, IAS	2813414	101	2803040 094182- 90009
2.	Addl. Director of Industries	Shri DineshMalhotra, IAS	2812613	301	2626745
3.	Addl. Director of Industries (Admin)	Shri DineshMalhotra, IAS	2812613	301	2626745
4.	Industrial Advisor	Dr. Rajinder Chauhan	2653069	201	98160- 16000
5.	Joint Director of Industries	Shri Suresh Sharma	2652637	107	94184- 71392
6.	Joint Director of Industries	Smt Sunita Kapta	2653124	104	94180- 89600
7.	Dy. Director(DIC)	Smt Tanuja Joshi	2652637	106	98160- 44558
8.	Dy. Director of Industries (Proj.)	Shri R.R. Patyal	2658310	103	94183- 09643
9.	Deputy Director (Sericulture)	Sh. A.K. Kulshreshta	2658127	208	94184- 93125
10.	Manager, (H.Q.)	Shri D.D. Sharma	2653124	209	2623471 094180-

					62690
11.	Manager	Smt. Deepika	2653124	207	94184-55285
12.	Manager(Policy)	Sh.Ramesh Chauhan	2653124	305	2671594
13.	Store Inspection Officer (Textiles)	Shri Navneet Gupta	2658127	109	2622515

Geological Wing

14.	State Geologist	Shri Arun Sharma	2657339	401	2627094
15.	Geologist	Indresh Dhiman	2652499	403	2670479
16.	Geologist	Sh. Rajneesh Sharma	2652499	407	2626786

c) Field Offices:-

i) Industry Wing

Sl.No.	Designation	Name of Officer	Office	Resi.
1.	G.M., DIC, Shimla	Sh. Ghanshyam Chand	2628270	2622034
2.	G.M., DIC, Solan	Smt.Rima Kashyap	230528	230372
3.	G.M., DIC, Sirmaur	Dr. Chand Sharma	222259	222445
4.	G.M., DIC, Kullu	Shri Sanjay Sharma	222532	224361
5.	G.M., DIC, Mandi	Sh.A.N.Dhiman	222161	225467
6.	G.M., DIC, Kangra	Shri Satish Kumar	223242	223224
7.	G.M., DIC, Bilaspur	Sh. Anshul Dhiman	224248	222471
8.	G.M., DIC, Hamirpur	Shri Prabhat Chaudhry	222309	221162
9.	G.M., DIC, Una	Shri Jai Gopal Sharma	223002	225135
10.	G.M., DIC, Chamba	Sh. Thakur Singh	222257	222341
11.	G.M., DIC, Kinnaur	Shri Sarchander Negi	222276	223079
12.	GM, DIC, Lahaul & Spiti	Shri Chaman Lal	222265	
13.	M.S. SWCA Parwanoo	Sh.A.R. Verma	233586	94180-30001

14.	Dy. Director, SWCA, Baddi	Sh.Sudhir Sharma	244222	94180-19470
15.	M.S., SWCA Paonta Sahib	Sh.G.S. Chauhan	222410	94181-32670
16.	M.S., SWCA Golthai	Sh. Anshul Dhiman	94180-74622	
17.	M.S., SWCA, Sansarpur Terrace	Sh. Vijay Kumar	01970-256480	
18.	M.S., SWCA, Nalagrah	Sh.T.R. Sharma	94180-88078	
19.	M.S., SWCA, Kala Amb	Sh.Ramesh Verma	98160-56946	

ii) Geological wing

Sl.No.	Designation	Name of Officer	Office	Resi.
1.	Mining Officer, Sirmaur at Nahan	Sh. Sanjeev Kumar	01702-222259	
2.	Mining Officer, Kangra at D/Shala	Sh. Ashok Sharma	01892-223242	
3.	Mining Officer, Chamba	Sh. T.S Negi	01899-222257	
4.	Mining Officer, Mandi	Sh. Puneet Guleria	01905-223342	
5.	Mining Officer, Una.	Sh. Paramjeet Singh	01975-223002	
6.	Mining Officer, Solan	Sh. Suresh Kumar	01792-230528	
7.	Mining Officer, Hamirpur.	Sh. Paramjeet Singh	01972-222309	
8.	Mining Officer, Shimla	Sh. Rajeev Jalia	0177-2652499	
9.	Mining Officer, Kullu	Sh. . Puneet Guleria	01902-222532	
10.	Mining Officer, Bilaspur	Sh. Pawan Bhardwaj	01978-224248	

11.	Mining Officer, Kinnaur	Sh. Sarchander Negi	01786-222276	
12.	Mining Officer, L/Spiti	Sh. Chaman Lal	01900-222265	

ii) Sericulture wing

Sl.No.	Designation/Division	Name of Officer	Office	Resi.
1.	Shimla Division	Sh. A.K. Kulshreshta	2652637	2671392
2.	Palampur Division	Shri Sh. Om Swaroop Sharma	231157	233125
3.	Silk Seed Production Officer, Nadaun Division	Sh. Baldev Chauhan	232635	
4.	Dehra Division	Sh. Vijay Kumar Mehta	233679	
5.	Mandi Division	Sh. A.N. Dhiman	222933	
6.	Sirmaur Division	Dr. Chand Sharma	222259	222445
7.	Ghumarwin Division	Sh. Baldev Chauhan	255590	

Annexure 'C'

PROFORMA FOR FURNISHING OF INFORMATION TO STATE INFORMATION COMMISSION HIMACHAL PRADESH FOR THE ANNUAL REPORT 2010-2011.

S. N.	Name of the public authority under the department	No. of requests received	Decision where requests were rejected				Appeals filed before the Appellate Authorities.			Appeals filed before the State Information Commission			No. of where disciplinary action was taken against any Officer in respect of administration of this Act	Amount of charges collected (Rs.)	
			No. of decision	No. of times various provisions were invoked.				No. of appeals	Outcome of Appeals		No. of appeals	Outcome of Appeals			
				Sec. 8	Sec. 9	Sec. 11	Sec. 24		Appeals accepted	Appeals rejected		Appeals accepted			Appeals rejected
1.	D.I.	383 (1)	-	-	-	-	-	4	4	-	-	-	-	-	1708
2.	M.D.,H.P. F.C.	132	14	14	-	-	-	11	7	4	4	3	1	-	4104
3.	M.D.H.P. SIDC	63	25	25	-	-	-	1	1	-	-	-	-	-	3851
4.	C.E.O. H.P.K&VI B	46	-	-	-	-	-	-	-	-	-	-	-	-	1151
5..	M.D.GIC,	39	7	7	-	-	-	2	2	1	1	-	-	-	1396
6.	MDHPSI EC	5	-	-	-	-	-	-	-	-	-	-	-	-	273
7.	MDHHC	7	-	-	-	-	-	-	-	-	-	-	-	-	195
	TOTAL	675 (1)	46	46	-	-	-	18	14	5	5	4	1	-	3842